

THE MATERIALS AND INFORMATION CONTAINED IN THESE DOCUMENTS ARE THE SOLE PROPERTY OF SAF-T-CART. ANY DESIGN OR PRINCIPLE CONTAINED IN THE PRINTS IS CONSIDERED CONFIDENTIAL. THIS INFORMATION IS SUMMITTED TO YOU WITH AGREEMENT THAT IS IT NOT TO BE REPRODUCED, COPIED OR RELEASED IN PART OR IN WHOLE TO ANY COMPANY OR INDIVIDUAL BY ACCEPTING THIS DOCUMENT YOU ARE AGREEING TO THE STATEMENTS ABOVE.

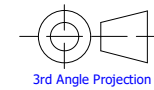
DIMENSIONS ARE IN INCHES UNLESS SPECIFIED OTHERWISE DO NOT TAKE DIMENSIONS FROM DRAWING

TOLERANCES
 FRACTIONS ± 1/16"
 ANGLES ± 0.5°
 X.XX ± N/A
 X.XXX ± N/A

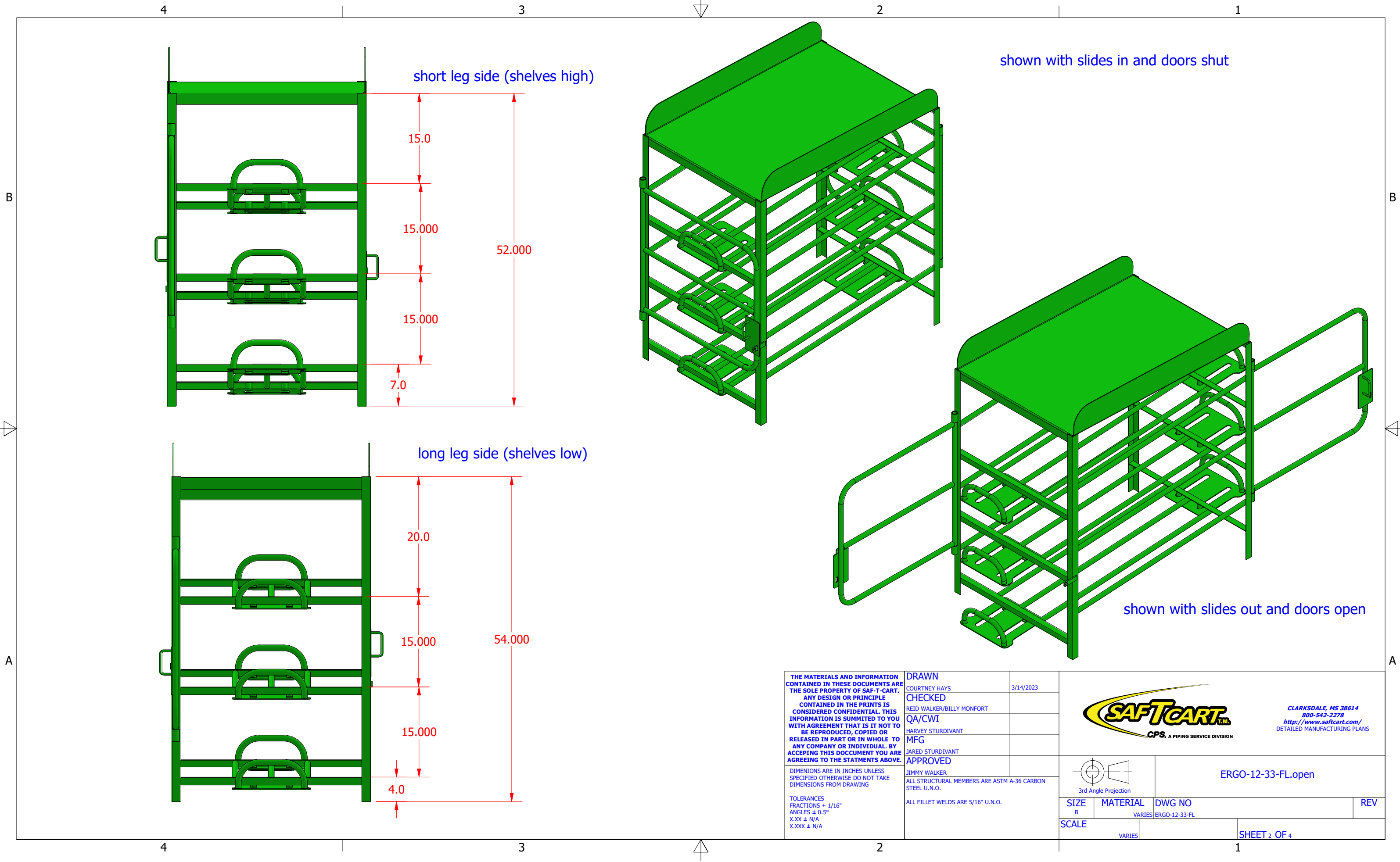
DRAWN	COURTNEY HAYS	3/14/2023
CHECKED	REID WALKER/BILLY MONFORT	
QA/CWI	HARVEY STURDIVANT	
MFG	JARED STURDIVANT	
APPROVED	JIMMY WALKER	
ALL STRUCTURAL MEMBERS ARE ASTM A-36 CARBON STEEL U.N.O.		
ALL FILLET WELDS ARE 5/16" U.N.O.		



CLARKSDALE, MS 38614
 800-542-2278
<http://www.saftcart.com/>
 DETAILED MANUFACTURING PLANS



ERGO-12-33-FL		REV
SIZE B	MATERIAL VARIES	DWG NO ERGO-12-33-FL
SCALE VARIES	SHEET 1 OF 4	



THE MATERIALS AND INFORMATION CONTAINED IN THESE DOCUMENTS ARE THE SOLE PROPERTY OF SAF-T-CART. ANY DESIGN OR PRINCIPLE CONTAINED IN THE PRINTS IS CONSIDERED CONFIDENTIAL. THIS INFORMATION IS SUMMITTED TO YOU WITH AGREEMENT THAT IS IT NOT TO BE REPRODUCED, COPIED OR RELEASED IN PART OR IN WHOLE TO ANY COMPANY OR INDIVIDUAL BY ACCEPTING THIS DOCUMENT YOU ARE AGREEING TO THE STATEMENTS ABOVE.

DIMENSIONS ARE IN INCHES UNLESS SPECIFIED OTHERWISE DO NOT TAKE DIMENSIONS FROM DRAWING

TOLERANCES
 FRACTIONS ± 1/16"
 ANGLES ± 0.5°
 X.XX ± N/A
 X.XXX ± N/A

DRAWN
 COURTNEY HAYS 3/14/2023

CHECKED
 REID WALKER/BILLY MONFORT


QA/CWI
 HARVEY STURDIVANT

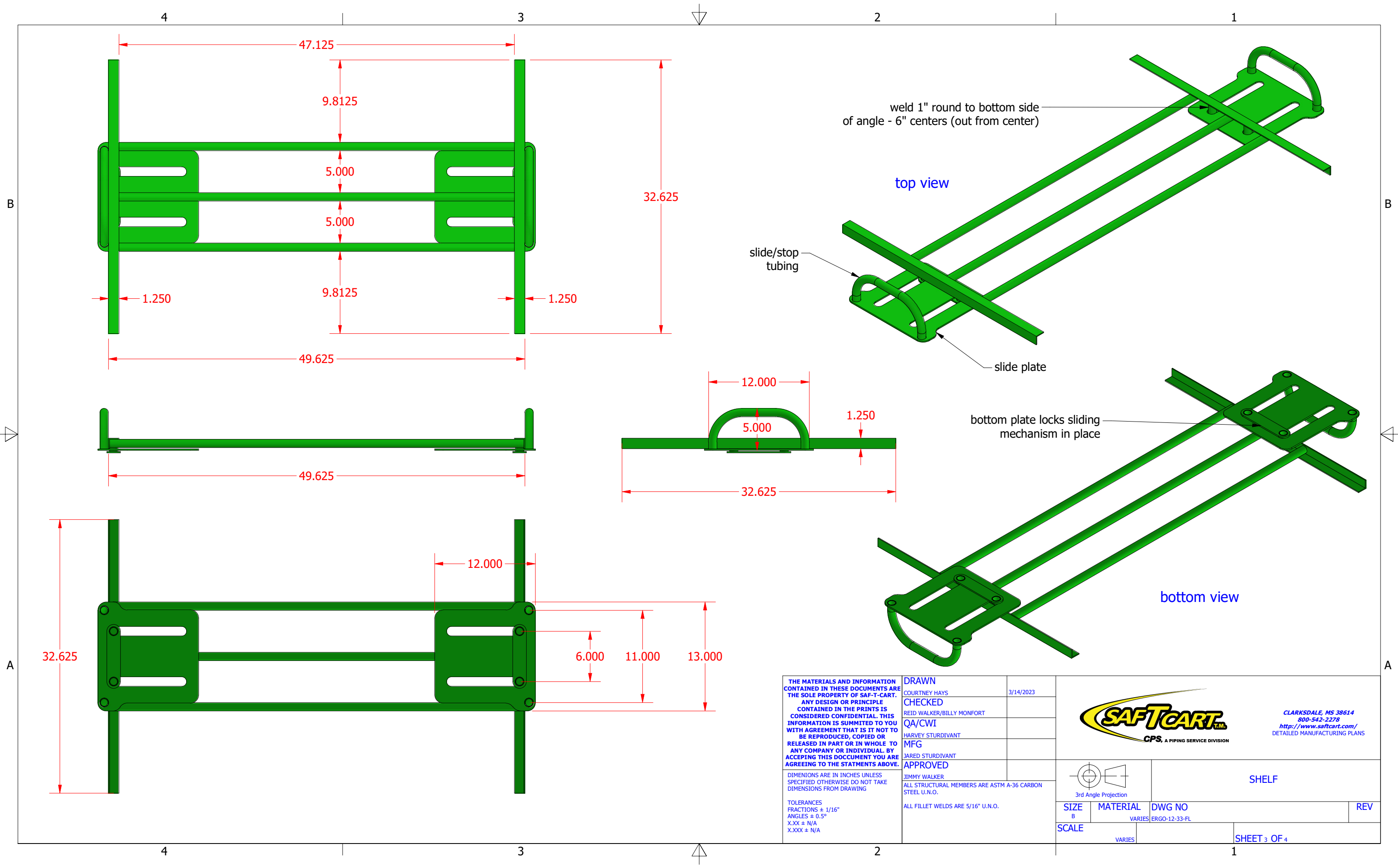
MFG
 JARED STURDIVANT

APPROVED
 JIMMY WALKER

ALL STRUCTURAL MEMBERS ARE ASTM A-36 CARBON STEEL U.N.O.

ALL FILLET WELDS ARE 5/16" U.N.O.

		CLARKSDALE, MS 38614 800-542-2278 http://www.saftcart.com/ DETAILED MANUFACTURING PLANS		
		ERGO-12-33-FL.open		
3rd Angle Projection	SIZE B	MATERIAL VARIES	DWG NO ERGO-12-33-FL	REV
SCALE VARIES	SHEET 2 OF 4			



THE MATERIALS AND INFORMATION CONTAINED IN THESE DOCUMENTS ARE THE SOLE PROPERTY OF SAF-T-CART. ANY DESIGN OR PRINCIPLE CONTAINED IN THE PRINTS IS CONSIDERED CONFIDENTIAL. THIS INFORMATION IS SUMMITTED TO YOU WITH AGREEMENT THAT IS IT NOT TO BE REPRODUCED, COPIED OR RELEASED IN PART OR IN WHOLE TO ANY COMPANY OR INDIVIDUAL. BY ACCEPTING THIS DOCUMENT YOU ARE AGREEING TO THE STATEMENTS ABOVE.


DIMENSIONS ARE IN INCHES UNLESS SPECIFIED OTHERWISE DO NOT TAKE DIMENSIONS FROM DRAWING

TOLERANCES
 FRACTIONS ± 1/16"
 ANGLES ± 0.5°
 X.XX ± N/A
 X.XXX ± N/A

DRAWN COURTNEY HAYS	3/14/2023
CHECKED REID WALKER/BILLY MONFORT	
QA/CWI HARVEY STURDIVANT	
MFG JARED STURDIVANT	
APPROVED JIMMY WALKER	

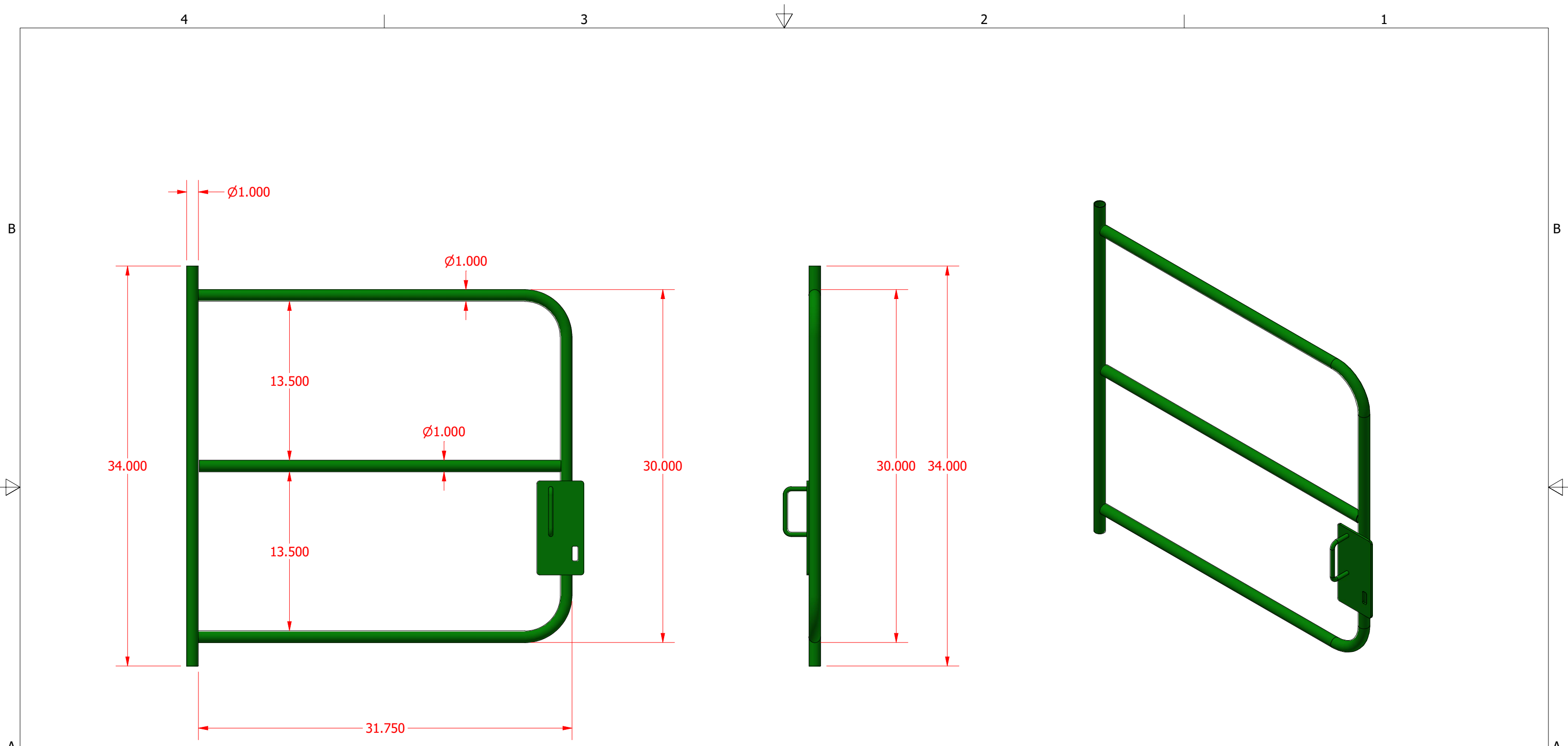
ALL STRUCTURAL MEMBERS ARE ASTM A-36 CARBON STEEL U.N.O.
 ALL FILLET WELDS ARE 5/16" U.N.O.


CLARKSDALE, MS 38614
 800-542-2278
<http://www.saftcart.com/>
 DETAILED MANUFACTURING PLANS



SHELF

3rd Angle Projection	DWG NO VARIES ERGO-12-33-FL	REV
SIZE B	MATERIAL VARIES	SCALE VARIES
SHEET 3 OF 4		



<p>THE MATERIALS AND INFORMATION CONTAINED IN THESE DOCUMENTS ARE THE SOLE PROPERTY OF SAF-T-CART. ANY DESIGN OR PRINCIPLE CONTAINED IN THE PRINTS IS CONSIDERED CONFIDENTIAL. THIS INFORMATION IS SUMMITTED TO YOU WITH AGREEMENT THAT IS IT NOT TO BE REPRODUCED, COPIED OR RELEASED IN PART OR IN WHOLE TO ANY COMPANY OR INDIVIDUAL. BY ACCEPTING THIS DOCUMENT YOU ARE AGREEING TO THE STATEMENTS ABOVE.</p> <p>DIMENSIONS ARE IN INCHES UNLESS SPECIFIED OTHERWISE DO NOT TAKE DIMENSIONS FROM DRAWING</p> <p>TOLERANCES FRACTIONS ± 1/16" ANGLES ± 0.5° X.XX ± N/A X.XXX ± N/A</p>	<p>DRAWN COURTNEY HAYS 3/14/2023</p>	 <p>CLARKSDALE, MS 38614 800-542-2278 http://www.saftcart.com/ DETAILED MANUFACTURING PLANS</p>		
	<p>CHECKED REID WALKER/BILLY MONFORT QA/CWI HARVEY STURDIVANT MFG JARED STURDIVANT APPROVED</p>		<p>SPCH-33-12.door</p>	
<p>3rd Angle Projection</p>	<p>SIZE B</p>	<p>MATERIAL VARIES</p>	<p>DWG NO ERGO-12-33-FL</p>	<p>REV</p>
<p>SCALE VARIES</p>	<p>SHEET 4 OF 4</p>			