

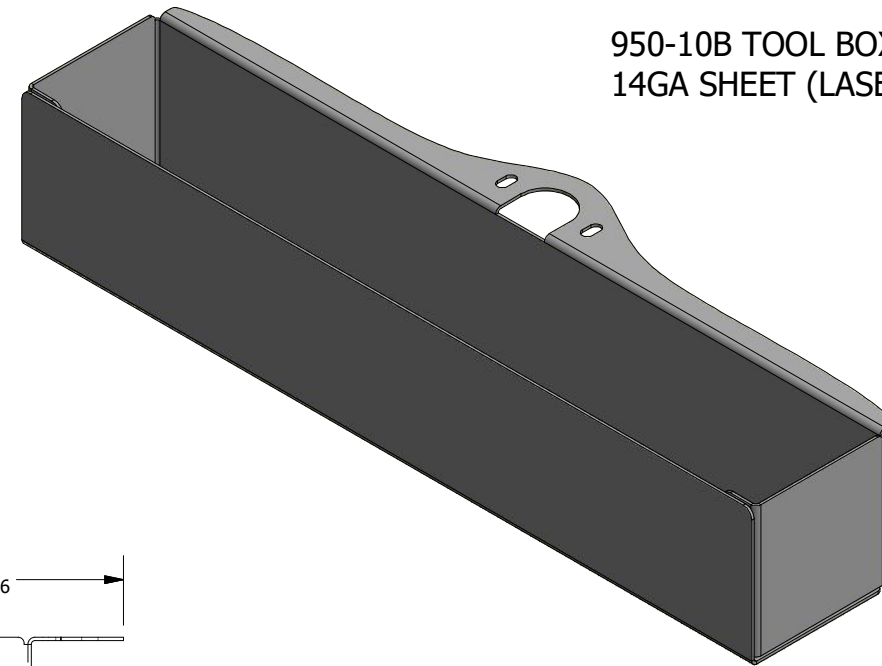
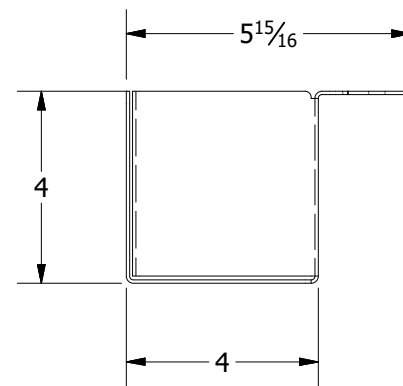
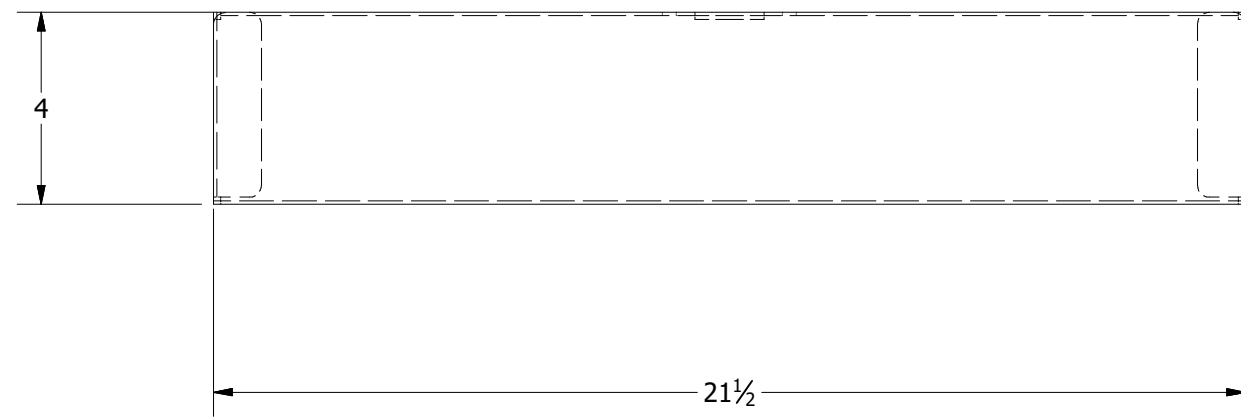
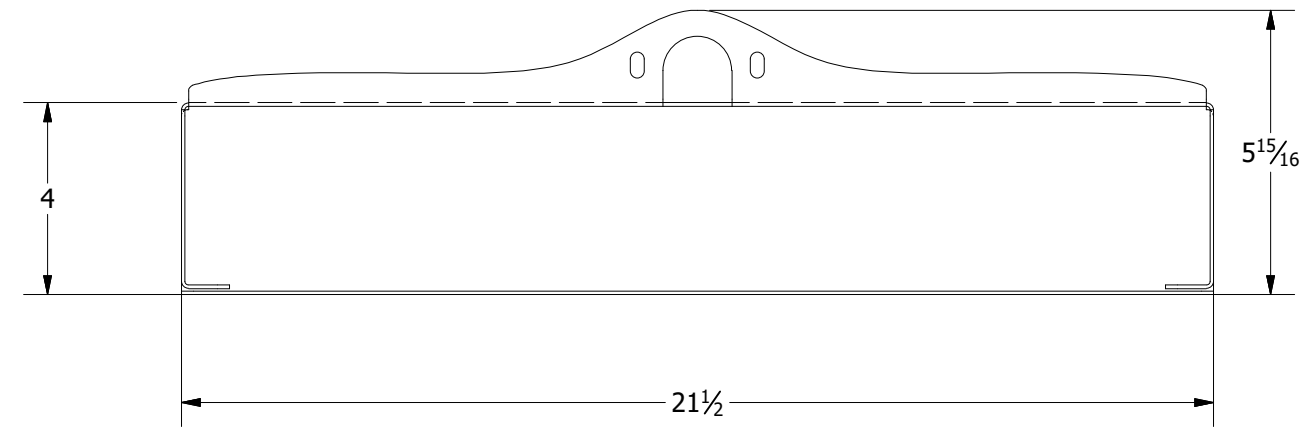
THE MATERIALS AND INFORMATION CONTAINED IN THESE DOCUMENTS ARE THE SOLE PROPERTY OF SAF-T-CART. ANY DESIGN OR PRINCIPLE CONTAINED IN THE PRINTS IS CONSIDERED CONFIDENTIAL. THIS INFORMATION IS SUMMITTED TO YOU WITH AGREEMENT THAT IS IT NOT TO BE REPRODUCED, COPIED OR RELEASED IN PART OR IN WHOLE TO ANY COMPANY OR INDIVIDUAL. BY ACCEPTING THIS DOCUMENT YOU ARE AGREEING TO THE STATEMENTS ABOVE.

DIMENSIONS ARE IN INCHES UNLESS SPECIFIED OTHERWISE DO NOT TAKE DIMENSIONS FROM DRAWING
 TOLERANCES
 FRACTIONS ± 1/16"
 ANGLES ± 0.5°
 X.XX ± N/A
 X.XXX ± N/A

DRAWN	WELBY	6/4/2019
CHECKED	REID WALKER/BILLY MONFORT	
QA/CWI	HARVEY STURDIVANT	
MFG	JAMES JACO	
APPROVED	JIMMY WALKER	
ALL STRUCTURAL MEMBERS ARE ASTM A-36 CARBON STEEL U.N.O. BASED ON ASME Y14.36M-1989		
ALL FILLET WELDS ARE 5/16" U.N.O.		

SAFTCART^{T.M.}
 CLARKSDALE, MS 38614
 800-542-2278
<http://www.saftcart.com/>
 DETAILED MANUFACTURING PLANS

950-10B			
SIZE	MATERIAL	DWG NO	REV
B	VARIES	950-10B.drawing	
SCALE	VARIES		SHEET 1 OF 11

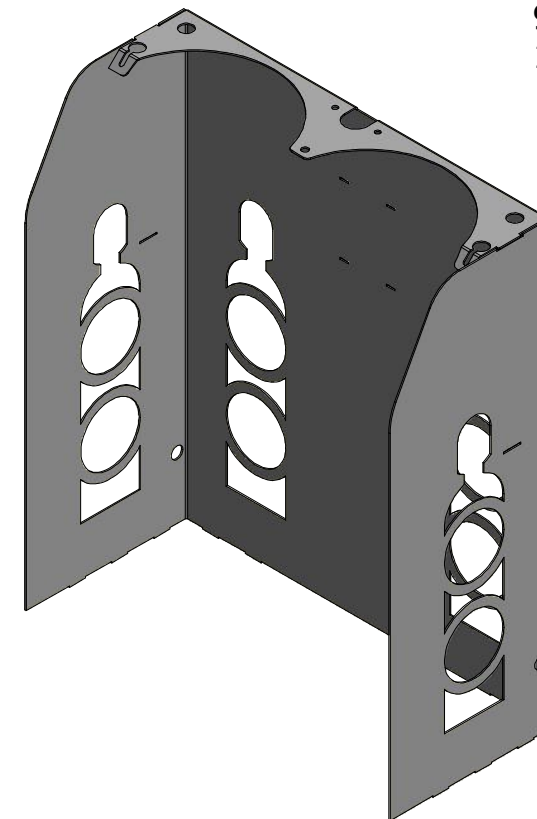
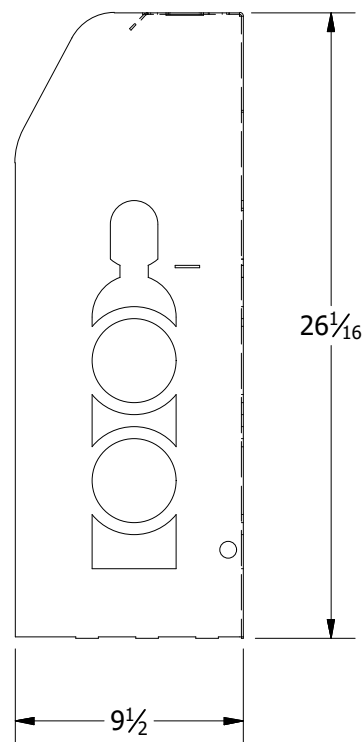
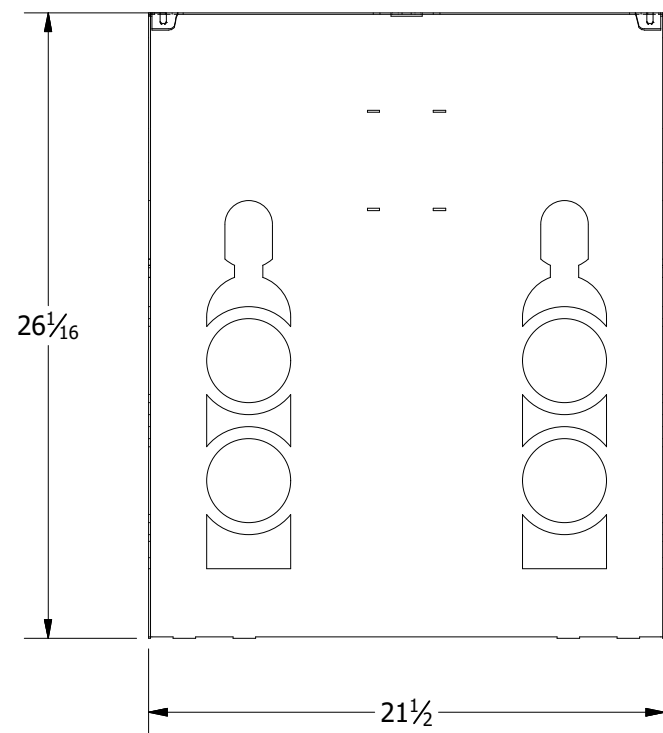
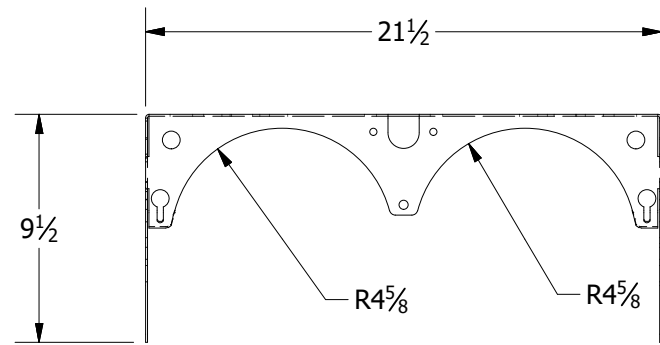


950-10B TOOL BOX
14GA SHEET (LASER/SAFAN)

<p>THE MATERIALS AND INFORMATION CONTAINED IN THESE DOCUMENTS ARE THE SOLE PROPERTY OF SAF-T-CART. ANY DESIGN OR PRINCIPLE CONTAINED IN THE PRINTS IS CONSIDERED CONFIDENTIAL. THIS INFORMATION IS SUMMITTED TO YOU WITH AGREEMENT THAT IS IT NOT TO BE REPRODUCED, COPIED OR RELEASED IN PART OR IN WHOLE TO ANY COMPANY OR INDIVIDUAL. BY ACCEPTING THIS DOCUMENT YOU ARE AGREEING TO THE STATEMENTS ABOVE.</p> <p>DIMENSIONS ARE IN INCHES UNLESS SPECIFIED OTHERWISE DO NOT TAKE DIMENSIONS FROM DRAWING</p> <p>TOLERANCES FRACTIONS ± 1/16" ANGLES ± 0.5° X.XX ± N/A X.XXX ± N/A</p>	DRAWN	6/4/2019
	WELBY	
	CHECKED	
	REID WALKER/BILLY MONFORT	
	QA/CWI	
	HARVEY STURDIVANT	
	MFG	
	JAMES JACO	
	APPROVED	
	JIMMY WALKER	
	ALL STRUCTURAL MEMBERS ARE ASTM A-36 CARBON STEEL U.N.O. BASED ON ASME Y14.36M-1989	
	ALL FILLET WELDS ARE 5/16" U.N.O.	

SAFTCART^{T.M.}
 CLARKSDALE, MS 38614
 800-542-2278
<http://www.saftcart.com/>
 DETAILED MANUFACTURING PLANS

Z11210028			
SIZE	MATERIAL	DWG NO	REV
B	VARIES	950-10B.drawing	
SCALE	VARIES		SHEET 2 OF 11



950-10B BODY
14GA SHEET (LASER/SAFAN)

THE MATERIALS AND INFORMATION CONTAINED IN THESE DOCUMENTS ARE THE SOLE PROPERTY OF SAF-T-CART. ANY DESIGN OR PRINCIPLE CONTAINED IN THE PRINTS IS CONSIDERED CONFIDENTIAL. THIS INFORMATION IS SUMMITTED TO YOU WITH AGREEMENT THAT IS IT NOT TO BE REPRODUCED, COPIED OR RELEASED IN PART OR IN WHOLE TO ANY COMPANY OR INDIVIDUAL. BY ACCEPTING THIS DOCUMENT YOU ARE AGREEING TO THE STATEMENTS ABOVE.

DIMENSIONS ARE IN INCHES UNLESS SPECIFIED OTHERWISE DO NOT TAKE DIMENSIONS FROM DRAWING

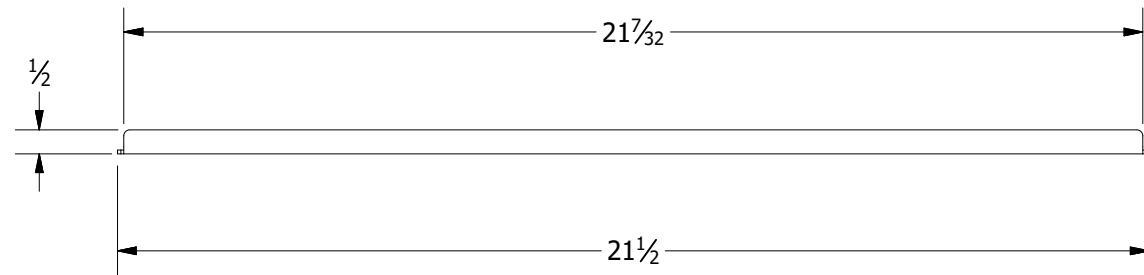
TOLERANCES
FRACTIONS ± 1/16"
ANGLES ± 0.5°
X.XX ± N/A
X.XXX ± N/A

DRAWN	WELBY	6/4/2019
CHECKED	REID WALKER/BILLY MONFORT	
QA/CWI	HARVEY STURDIVANT	
MFG	JAMES JACO	
APPROVED	JIMMY WALKER	
ALL STRUCTURAL MEMBERS ARE ASTM A-36 CARBON STEEL U.N.O. BASED ON ASME Y14.36M-1989		
ALL FILLET WELDS ARE 5/16" U.N.O.		

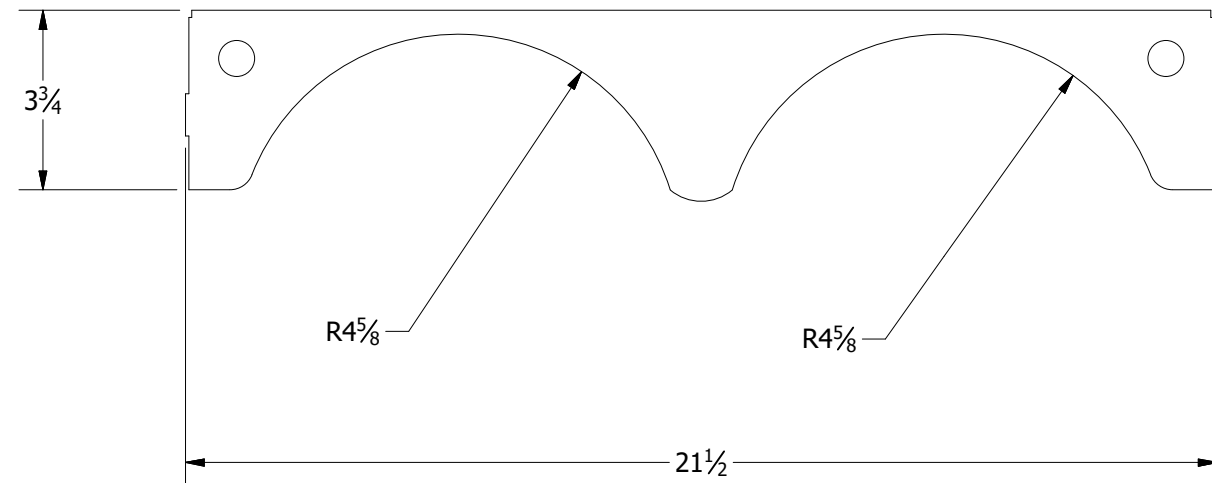


Z11210029

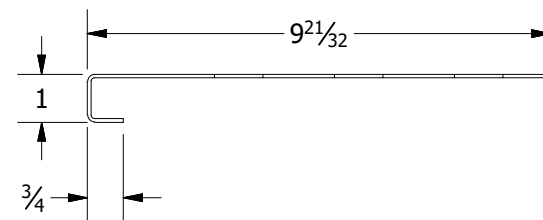
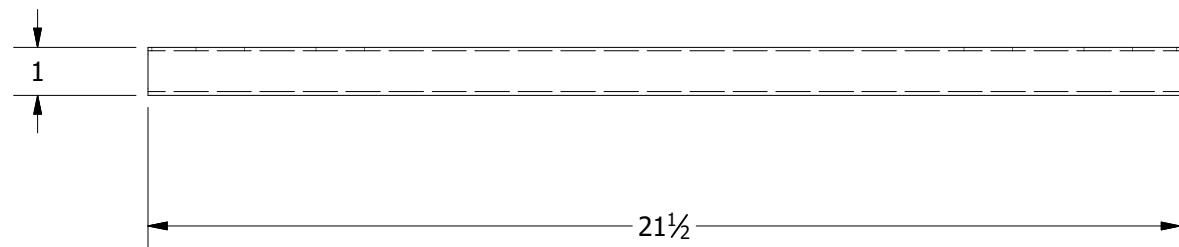
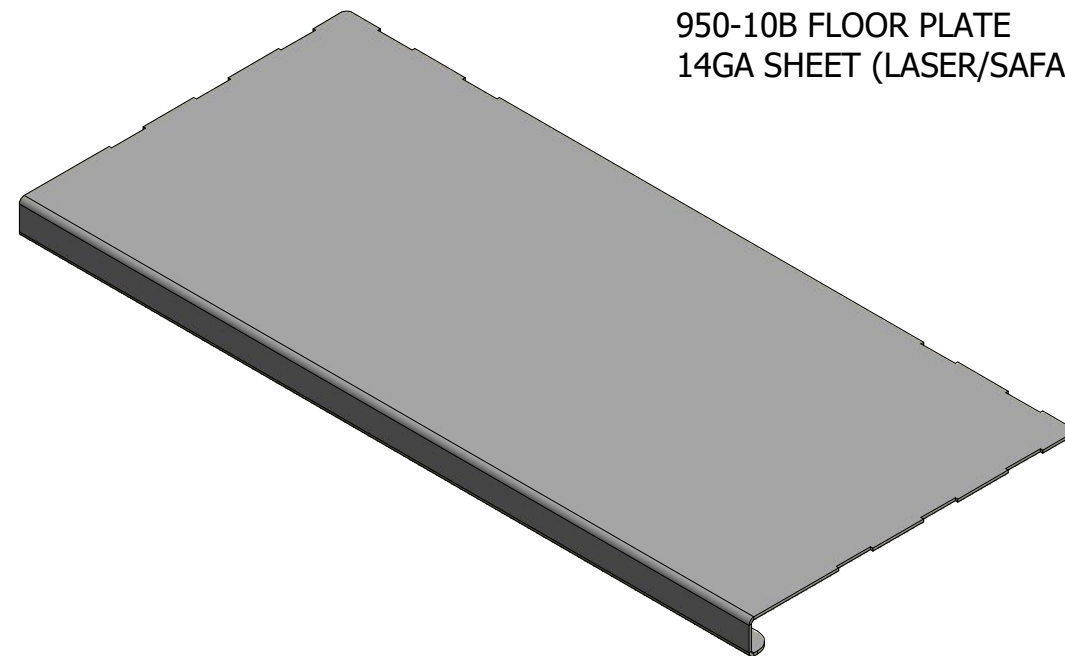
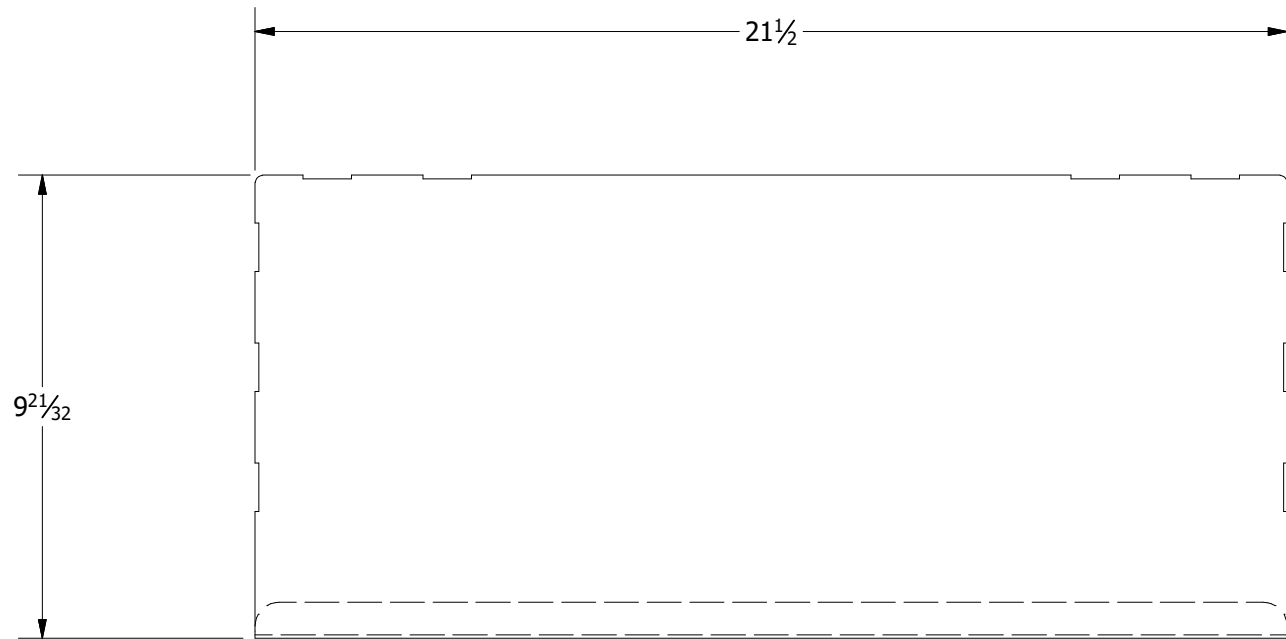
SIZE	MATERIAL	DWG NO	REV
B	VARIES	950-10B.drawing	
SCALE	VARIES	SHEET 3 OF 11	



950-10B RIB
14GA SHEET (LASER/SAFAN)

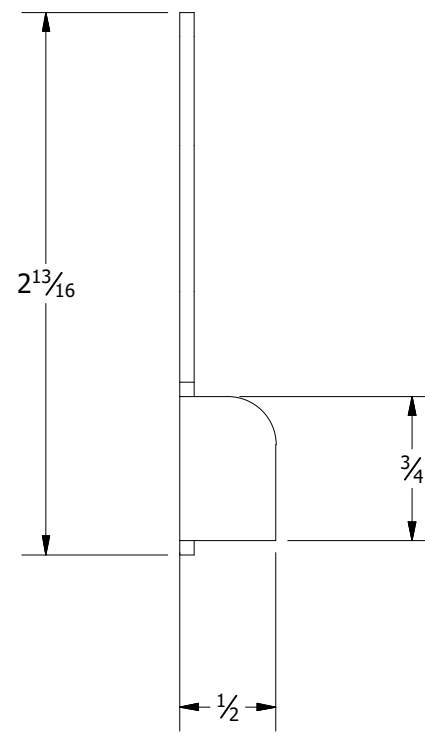
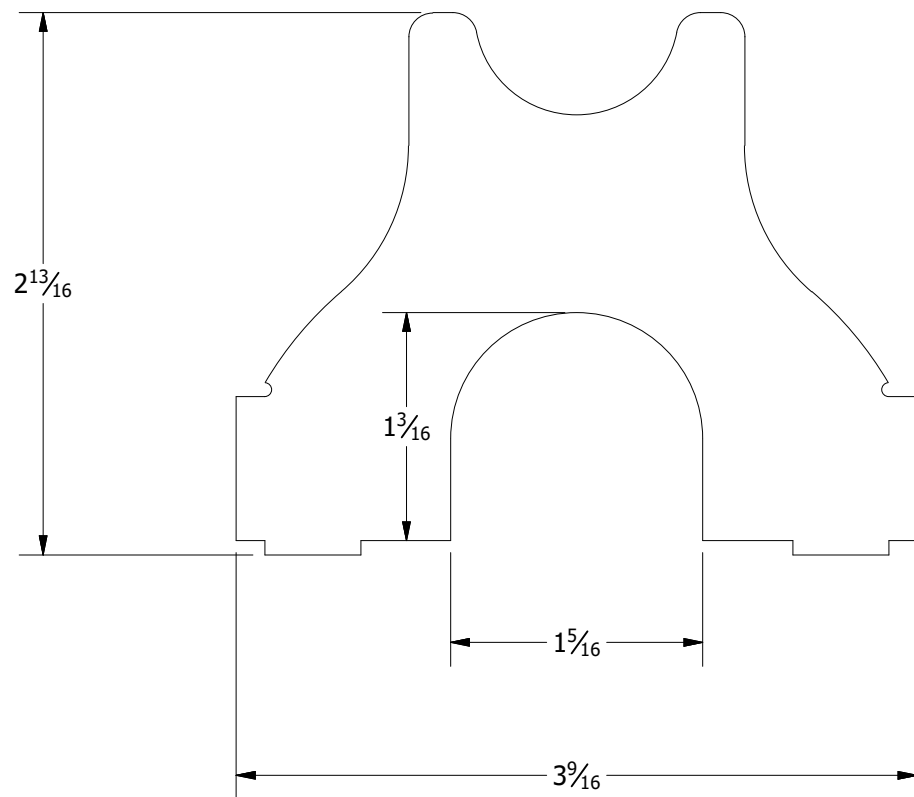
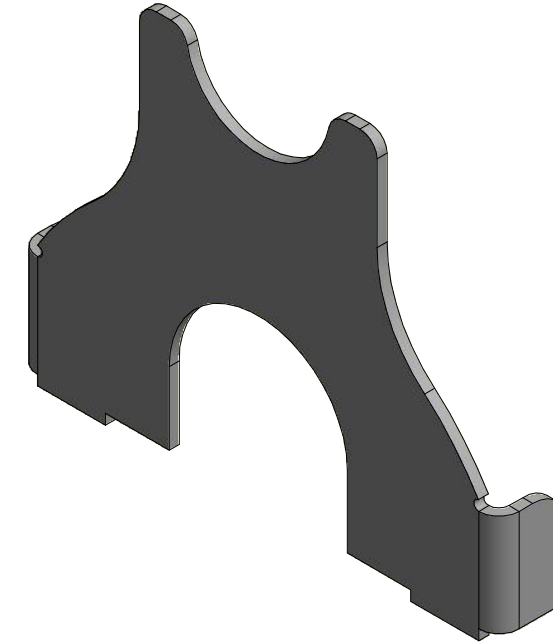


<p>THE MATERIALS AND INFORMATION CONTAINED IN THESE DOCUMENTS ARE THE SOLE PROPERTY OF SAF-T-CART. ANY DESIGN OR PRINCIPLE CONTAINED IN THE PRINTS IS CONSIDERED CONFIDENTIAL. THIS INFORMATION IS SUMMITTED TO YOU WITH AGREEMENT THAT IS IT NOT TO BE REPRODUCED, COPIED OR RELEASED IN PART OR IN WHOLE TO ANY COMPANY OR INDIVIDUAL. BY ACCEPTING THIS DOCUMENT YOU ARE AGREEING TO THE STATEMENTS ABOVE.</p> <p>DIMENSIONS ARE IN INCHES UNLESS SPECIFIED OTHERWISE DO NOT TAKE DIMENSIONS FROM DRAWING</p> <p>TOLERANCES FRACTIONS ± 1/16" ANGLES ± 0.5° X.XX ± N/A X.XXX ± N/A</p>	<p>DRAWN WELBY 6/4/2019</p>	<p>SAFTCART^{T.M.} CLARKSDALE, MS 38614 800-542-2278 http://www.saftcart.com/ DETAILED MANUFACTURING PLANS</p>		
	<p>CHECKED REID WALKER/BILLY MONFORT</p>			
	<p>QA/CWI HARVEY STURDIVANT</p>			
	<p>MFG JAMES JACO</p>			
<p>APPROVED JIMMY WALKER</p>	<p>ALL STRUCTURAL MEMBERS ARE ASTM A-36 CARBON STEEL U.N.O. BASED ON ASME Y14.36M-1989</p>	<p>Z11210030</p>		
<p>ALL FILLET WELDS ARE 5/16" U.N.O.</p>	<p>SIZE B</p>	<p>MATERIAL VARIES</p>	<p>DWG NO 950-10B.drawing</p>	<p>REV</p>
	<p>SCALE VARIES</p>			<p>SHEET 4 OF 11</p>



<p>THE MATERIALS AND INFORMATION CONTAINED IN THESE DOCUMENTS ARE THE SOLE PROPERTY OF SAF-T-CART. ANY DESIGN OR PRINCIPLE CONTAINED IN THE PRINTS IS CONSIDERED CONFIDENTIAL. THIS INFORMATION IS SUMMITTED TO YOU WITH AGREEMENT THAT IS IT NOT TO BE REPRODUCED, COPIED OR RELEASED IN PART OR IN WHOLE TO ANY COMPANY OR INDIVIDUAL. BY ACCEPTING THIS DOCUMENT YOU ARE AGREEING TO THE STATEMENTS ABOVE.</p> <p>DIMENSIONS ARE IN INCHES UNLESS SPECIFIED OTHERWISE DO NOT TAKE DIMENSIONS FROM DRAWING</p> <p>TOLERANCES FRACTIONS ± 1/16" ANGLES ± 0.5° X.XX ± N/A X.XXX ± N/A</p>	<p>DRAWN WELBY 6/4/2019</p>	<p>SAFTCART^{T.M.} CLARKSDALE, MS 38614 800-542-2278 http://www.saftcart.com/ DETAILED MANUFACTURING PLANS</p>
	<p>CHECKED REID WALKER/BILLY MONFORT</p>	
	<p>QA/CWI HARVEY STURDIVANT</p>	
	<p>MFG JAMES JACO</p>	
<p>APPROVED JIMMY WALKER</p>	<p>Z11210031</p>	<p>SIZE B</p>
<p>ALL STRUCTURAL MEMBERS ARE ASTM A-36 CARBON STEEL U.N.O. BASED ON ASME Y14.36M-1989</p>	<p>ALL FILLET WELDS ARE 5/16" U.N.O.</p>	<p>MATERIAL VARIES</p>
<p>SCALE VARIES</p>	<p>DWG NO 950-10B.drawing</p>	<p>REV</p>
<p>SHEET 5 OF 11</p>	<p>1</p>	<p>11</p>

950-10B HANDLE BRACKET (WITH HOLE)
14GA SHEET (LASER/SAFAN)



THE MATERIALS AND INFORMATION CONTAINED IN THESE DOCUMENTS ARE THE SOLE PROPERTY OF SAF-T-CART. ANY DESIGN OR PRINCIPLE CONTAINED IN THE PRINTS IS CONSIDERED CONFIDENTIAL. THIS INFORMATION IS SUMMITTED TO YOU WITH AGREEMENT THAT IS IT NOT TO BE REPRODUCED, COPIED OR RELEASED IN PART OR IN WHOLE TO ANY COMPANY OR INDIVIDUAL. BY ACCEPTING THIS DOCUMENT YOU ARE AGREEING TO THE STATEMENTS ABOVE.

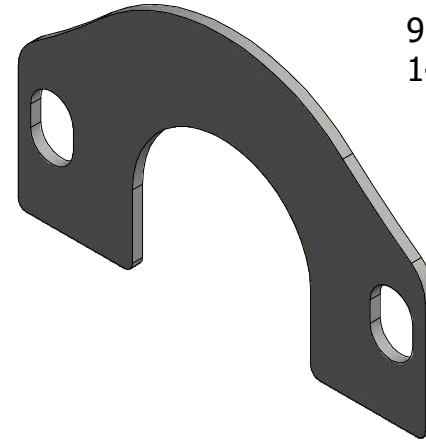
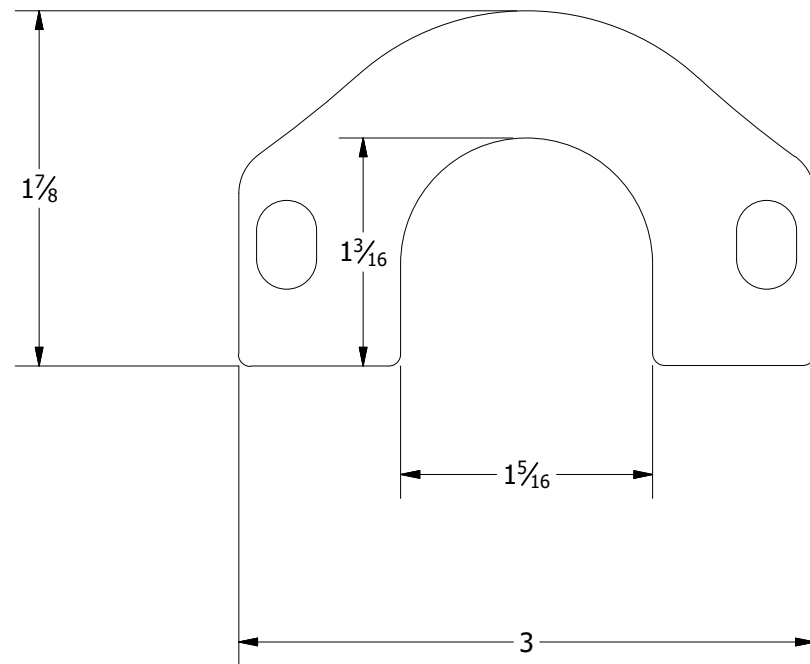
DIMENSIONS ARE IN INCHES UNLESS SPECIFIED OTHERWISE DO NOT TAKE DIMENSIONS FROM DRAWING

TOLERANCES
FRACTIONS ± 1/16"
ANGLES ± 0.5°
X.XX ± N/A
X.XXX ± N/A

DRAWN	WELBY	6/4/2019
CHECKED	REID WALKER/BILLY MONFORT	
QA/CWI	HARVEY STURDIVANT	
MFG	JAMES JACO	
APPROVED	JIMMY WALKER	
ALL STRUCTURAL MEMBERS ARE ASTM A-36 CARBON STEEL U.N.O. BASED ON ASME Y14.36M-1989		
ALL FILLET WELDS ARE 5/16" U.N.O.		

CLARKSDALE, MS 38614
800-542-2278
<http://www.saftcart.com/>
DETAILED MANUFACTURING PLANS

Z11210032			
SIZE	MATERIAL	DWG NO	REV
B	VARIES	950-10B.drawing	
SCALE	VARIES		SHEET 6 OF 11



950-10B HANDLE BRACE
14GA SHEET (LASER ONLY)

THE MATERIALS AND INFORMATION CONTAINED IN THESE DOCUMENTS ARE THE SOLE PROPERTY OF SAF-T-CART. ANY DESIGN OR PRINCIPLE CONTAINED IN THE PRINTS IS CONSIDERED CONFIDENTIAL. THIS INFORMATION IS SUMMITTED TO YOU WITH AGREEMENT THAT IS IT NOT TO BE REPRODUCED, COPIED OR RELEASED IN PART OR IN WHOLE TO ANY COMPANY OR INDIVIDUAL. BY ACCEPTING THIS DOCUMENT YOU ARE AGREEING TO THE STATEMENTS ABOVE.

DIMENSIONS ARE IN INCHES UNLESS SPECIFIED OTHERWISE DO NOT TAKE DIMENSIONS FROM DRAWING

TOLERANCES
FRACTIONS $\pm 1/16"$
ANGLES $\pm 0.5^\circ$
X.XX $\pm N/A$
X.XXX $\pm N/A$

DRAWN

WELBY 6/4/2019
CHECKED
REID WALKER/BILLY MONFORT
QA/CWI
HARVEY STURDIVANT
MFG

APPROVED

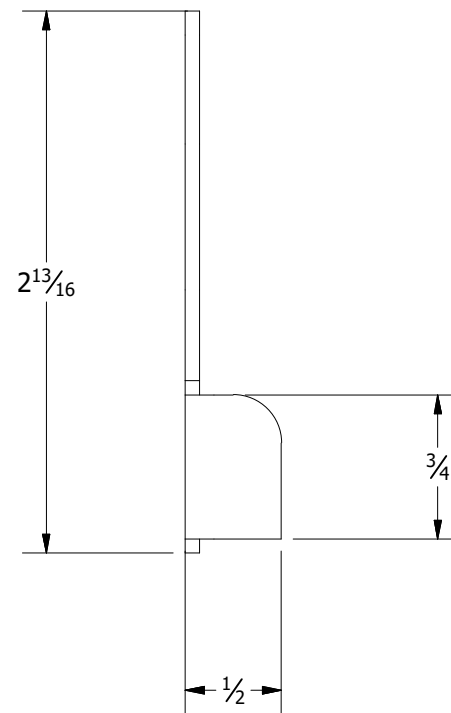
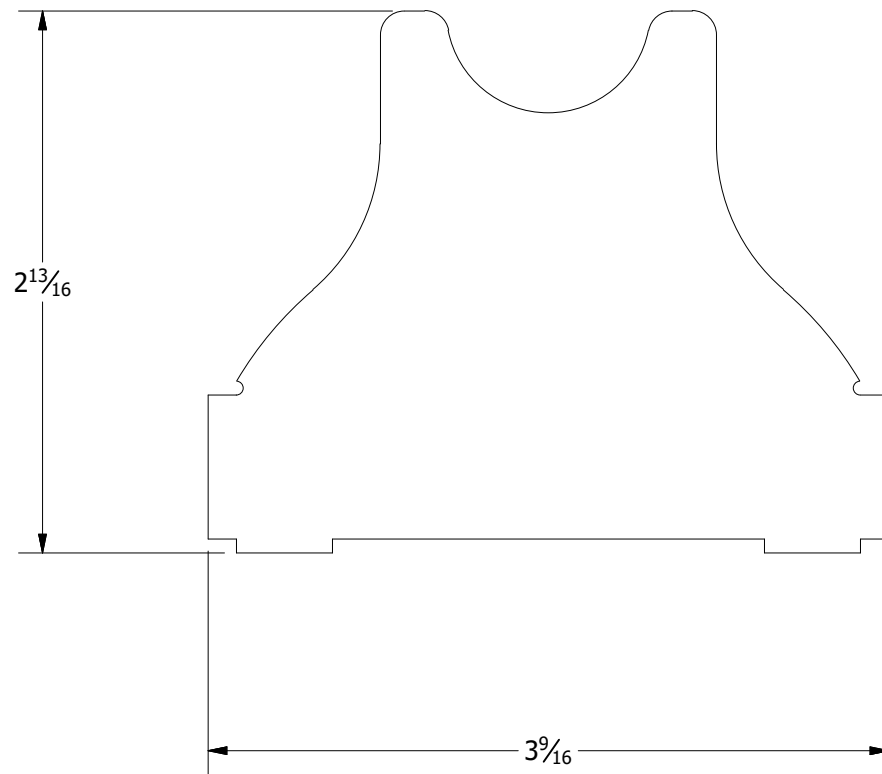
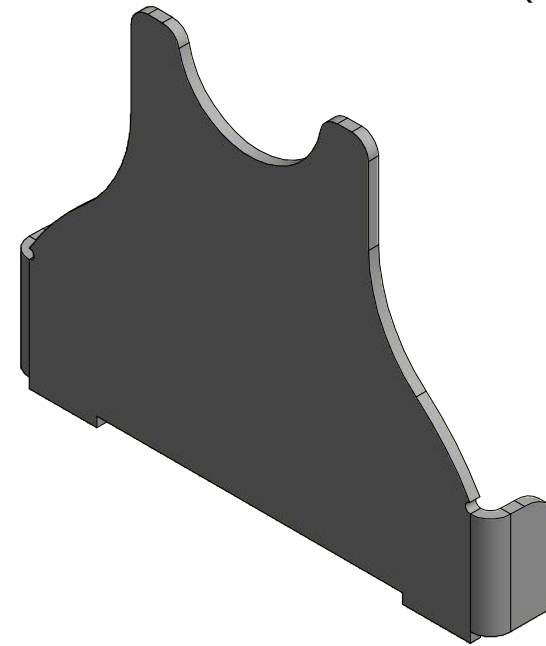
JIMMY WALKER
ALL STRUCTURAL MEMBERS ARE ASTM A-36 CARBON STEEL U.N.O. BASED ON ASME Y14.36M-1989
ALL FILLET WELDS ARE 5/16" U.N.O.



Z11210033

SIZE	MATERIAL	DWG NO	REV
B	VARIES	950-10B.drawing	
SCALE	VARIES	SHEET 7 OF 11	

950-10B HANDLE BRACKET (NO HOLE)
14GA SHEET (LASER/SAFAN)



THE MATERIALS AND INFORMATION CONTAINED IN THESE DOCUMENTS ARE THE SOLE PROPERTY OF SAF-T-CART. ANY DESIGN OR PRINCIPLE CONTAINED IN THE PRINTS IS CONSIDERED CONFIDENTIAL. THIS INFORMATION IS SUMMITTED TO YOU WITH AGREEMENT THAT IS IT NOT TO BE REPRODUCED, COPIED OR RELEASED IN PART OR IN WHOLE TO ANY COMPANY OR INDIVIDUAL. BY ACCEPTING THIS DOCUMENT YOU ARE AGREEING TO THE STATEMENTS ABOVE.

DIMENSIONS ARE IN INCHES UNLESS SPECIFIED OTHERWISE DO NOT TAKE DIMENSIONS FROM DRAWING

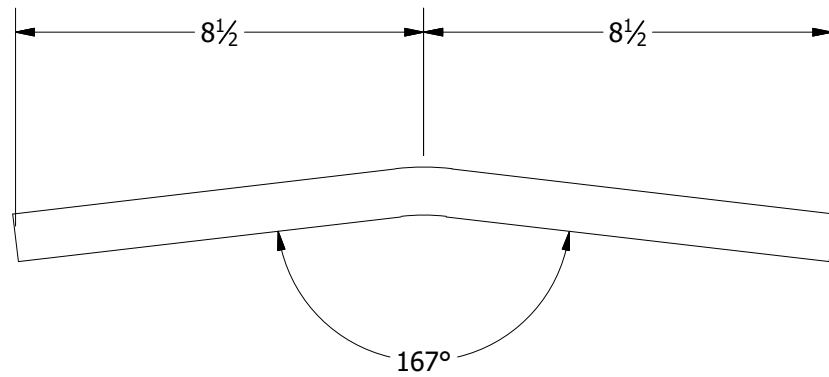
TOLERANCES
FRACTIONS ± 1/16"
ANGLES ± 0.5°
X.XX ± N/A
X.XXX ± N/A

DRAWN	WELBY	6/4/2019
CHECKED	REID WALKER/BILLY MONFORT	
QA/CWI	HARVEY STURDIVANT	
MFG	JAMES JACO	
APPROVED	JIMMY WALKER	
ALL STRUCTURAL MEMBERS ARE ASTM A-36 CARBON STEEL U.N.O. BASED ON ASME Y14.36M-1989		
ALL FILLET WELDS ARE 5/16" U.N.O.		

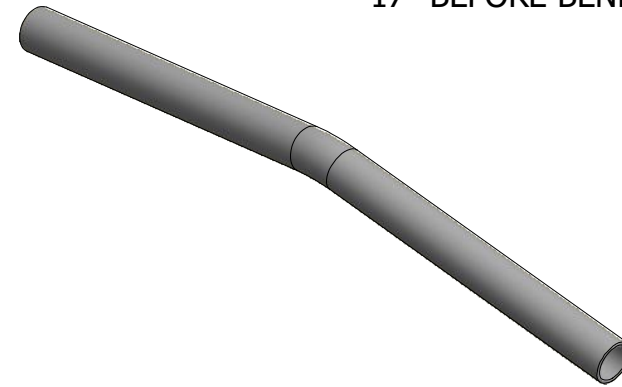



Z11210034

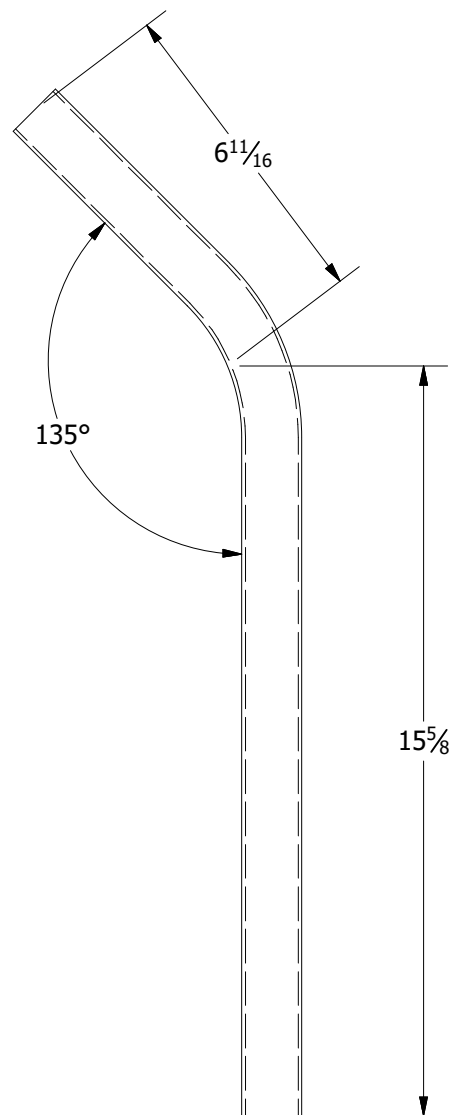
SIZE	MATERIAL	DWG NO	REV
B	VARIES	950-10B.drawing	
SCALE	VARIES	SHEET 8 OF 11	




935-8B or 950-10B "T" HANDLE
 1" ROUND TUBE 14GA
 17" BEFORE BEND

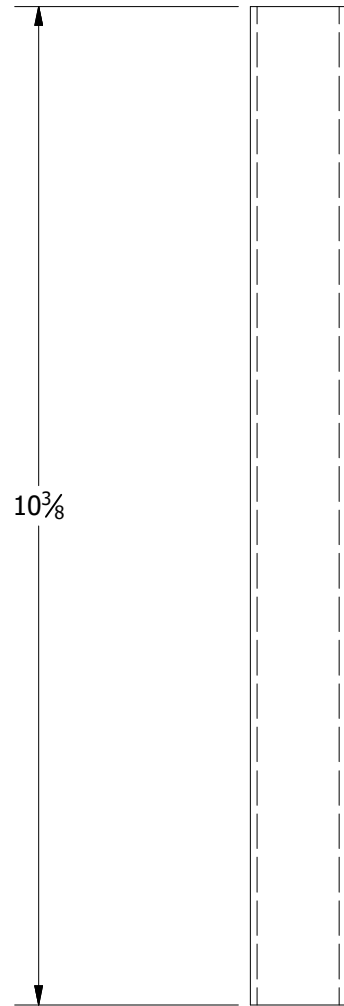


<p>THE MATERIALS AND INFORMATION CONTAINED IN THESE DOCUMENTS ARE THE SOLE PROPERTY OF SAF-T-CART. ANY DESIGN OR PRINCIPLE CONTAINED IN THE PRINTS IS CONSIDERED CONFIDENTIAL. THIS INFORMATION IS SUMMITTED TO YOU WITH AGREEMENT THAT IS IT NOT TO BE REPRODUCED, COPIED OR RELEASED IN PART OR IN WHOLE TO ANY COMPANY OR INDIVIDUAL. BY ACCEPTING THIS DOCUMENT YOU ARE AGREEING TO THE STATEMENTS ABOVE.</p> <p>DIMENSIONS ARE IN INCHES UNLESS SPECIFIED OTHERWISE DO NOT TAKE DIMENSIONS FROM DRAWING</p> <p>TOLERANCES FRACTIONS ± 1/16" ANGLES ± 0.5° X.XX ± N/A X.XXX ± N/A</p>	<p>DRAWN WELBY 6/4/2019</p>	 <p>CLARKSDALE, MS 38614 800-542-2278 http://www.saftcart.com/ DETAILED MANUFACTURING PLANS</p>							
	<p>CHECKED REID WALKER/BILLY MONFORT QA/CWI HARVEY STURDIVANT MFG</p>								
	<p>APPROVED JAMES JACO JIMMY WALKER</p>	<p>ALL STRUCTURAL MEMBERS ARE ASTM A-36 CARBON STEEL U.N.O. BASED ON ASME Y14.36M-1989</p>	<p>Z31210008</p>						
	<p>ALL FILLET WELDS ARE 5/16" U.N.O.</p>	<table border="1"> <tr> <td>SIZE B</td> <td>MATERIAL VARIES</td> <td>DWG NO 950-10B.drawing</td> <td>REV</td> </tr> <tr> <td>SCALE VARIES</td> <td colspan="2"></td> <td>SHEET 9 OF 11</td> </tr> </table>	SIZE B	MATERIAL VARIES	DWG NO 950-10B.drawing	REV	SCALE VARIES		
SIZE B	MATERIAL VARIES	DWG NO 950-10B.drawing	REV						
SCALE VARIES			SHEET 9 OF 11						



950-10B LOWER HANDLE
 1-1/4" ROUND TUBE 14GA
 23" BEFORE BEND

<p>THE MATERIALS AND INFORMATION CONTAINED IN THESE DOCUMENTS ARE THE SOLE PROPERTY OF SAF-T-CART. ANY DESIGN OR PRINCIPLE CONTAINED IN THE PRINTS IS CONSIDERED CONFIDENTIAL. THIS INFORMATION IS SUMMITTED TO YOU WITH AGREEMENT THAT IS IT NOT TO BE REPRODUCED, COPIED OR RELEASED IN PART OR IN WHOLE TO ANY COMPANY OR INDIVIDUAL. BY ACCEPTING THIS DOCUMENT YOU ARE AGREEING TO THE STATEMENTS ABOVE.</p> <p>DIMENSIONS ARE IN INCHES UNLESS SPECIFIED OTHERWISE DO NOT TAKE DIMENSIONS FROM DRAWING</p> <p>TOLERANCES FRACTIONS ± 1/16" ANGLES ± 0.5° X.XX ± N/A X.XXX ± N/A</p>	<p>DRAWN WELBY 6/4/2019</p>	 <p>CLARKSDALE, MS 38614 800-542-2278 http://www.saftcart.com/ DETAILED MANUFACTURING PLANS</p>			
	<p>CHECKED REID WALKER/BILLY MONFORT</p>				<p>QA/CWI HARVEY STURDIVANT</p>
	<p>MFG JAMES JACO</p>	<p>APPROVED JIMMY WALKER</p>	<p>Z31210009</p>		
	<p>ALL STRUCTURAL MEMBERS ARE ASTM A-36 CARBON STEEL U.N.O. BASED ON ASME Y14.36M-1989</p> <p>ALL FILLET WELDS ARE 5/16" U.N.O.</p>	<p>SIZE B</p>	<p>MATERIAL VARIES</p>	<p>DWG NO 950-10B.drawing</p>	<p>REV</p>
<p>SCALE VARIES</p>		<p>SHEET 10 OF 11</p>			



950-10B FRAME BRACE
 1" ROUND TUBE 14GA
 10-3/8" LONG

THE MATERIALS AND INFORMATION CONTAINED IN THESE DOCUMENTS ARE THE SOLE PROPERTY OF SAF-T-CART. ANY DESIGN OR PRINCIPLE CONTAINED IN THE PRINTS IS CONSIDERED CONFIDENTIAL. THIS INFORMATION IS SUMMITTED TO YOU WITH AGREEMENT THAT IS IT NOT TO BE REPRODUCED, COPIED OR RELEASED IN PART OR IN WHOLE TO ANY COMPANY OR INDIVIDUAL. BY ACCEPTING THIS DOCUMENT YOU ARE AGREEING TO THE STATEMENTS ABOVE.

DIMENSIONS ARE IN INCHES UNLESS SPECIFIED OTHERWISE DO NOT TAKE DIMENSIONS FROM DRAWING

TOLERANCES
 FRACTIONS ± 1/16"
 ANGLES ± 0.5°
 X.XX ± N/A
 X.XXX ± N/A

DRAWN	WELBY	6/4/2019
CHECKED	REID WALKER/BILLY MONFORT	
QA/CWI	HARVEY STURDIVANT	
MFG	JAMES JACO	
APPROVED	JIMMY WALKER	
ALL STRUCTURAL MEMBERS ARE ASTM A-36 CARBON STEEL U.N.O. BASED ON ASME Y14.36M-1989		
ALL FILLET WELDS ARE 5/16" U.N.O.		

CLARKSDALE, MS 38614
 800-542-2278
<http://www.saftcart.com/>
 DETAILED MANUFACTURING PLANS

Z31210010

SIZE	MATERIAL	DWG NO	REV
B	VARIES	950-10B.drawing	
SCALE	VARIES	SHEET 11 OF 11	