

THE MATERIALS AND INFORMATION CONTAINED IN THESE DOCUMENTS ARE THE SOLE PROPERTY OF SAF-T-CART. ANY DESIGN OR PRINCIPLE CONTAINED IN THE PRINTS IS CONSIDERED CONFIDENTIAL. THIS INFORMATION IS SUMMITTED TO YOU WITH AGREEMENT THAT IS IT NOT TO BE REPRODUCED, COPIED OR RELEASED IN PART OR IN WHOLE TO ANY COMPANY OR INDIVIDUAL. BY ACCEPTING THIS DOCUMENT YOU ARE AGREEING TO THE STATEMENTS ABOVE.

DIMENSIONS ARE IN INCHES UNLESS SPECIFIED OTHERWISE DO NOT TAKE DIMENSIONS FROM DRAWING

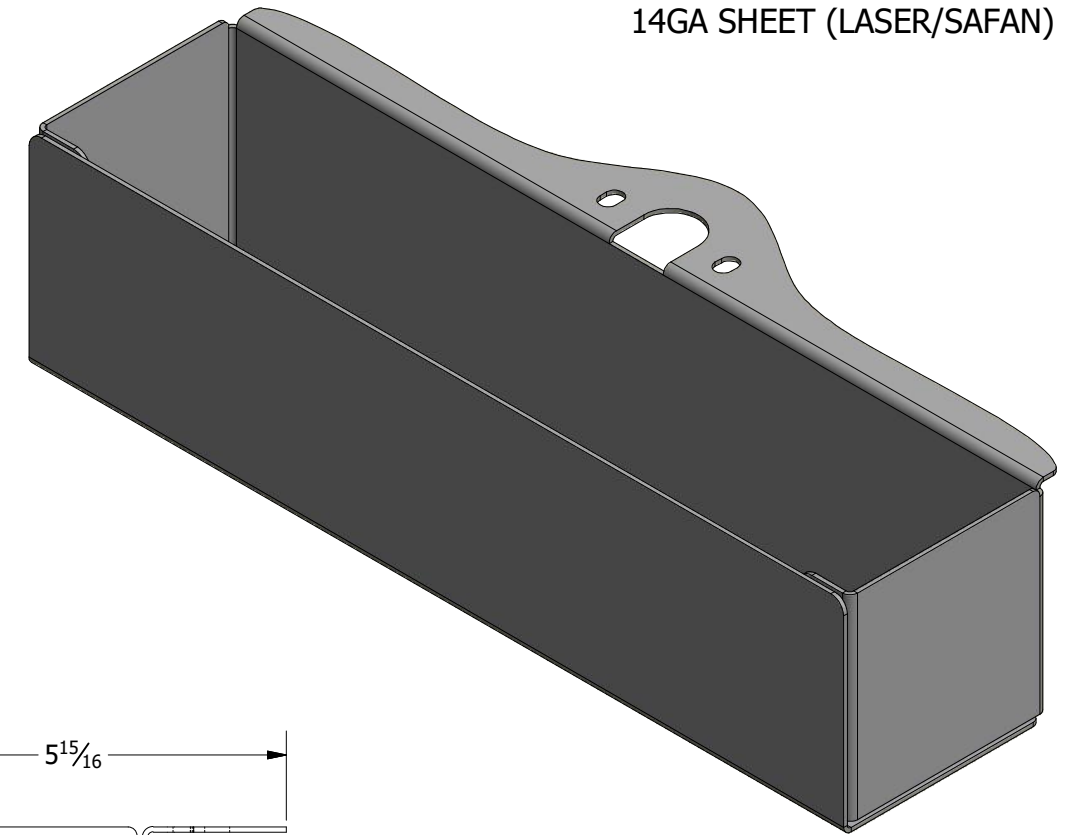
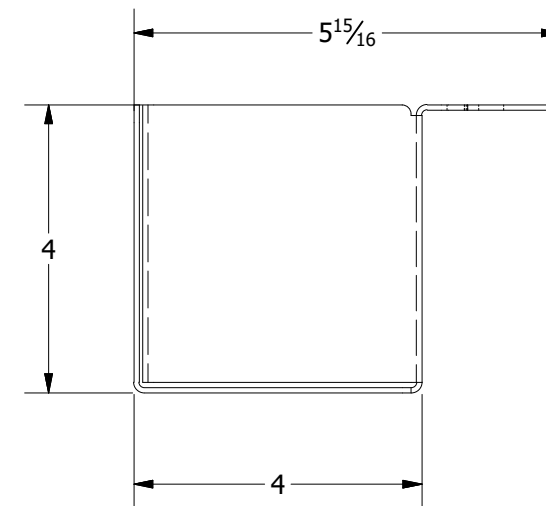
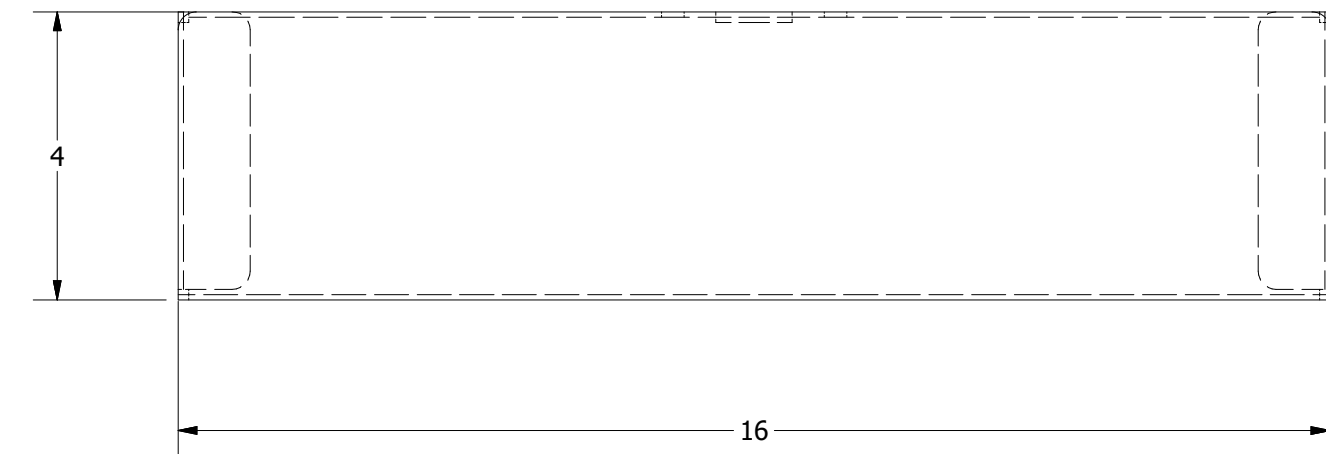
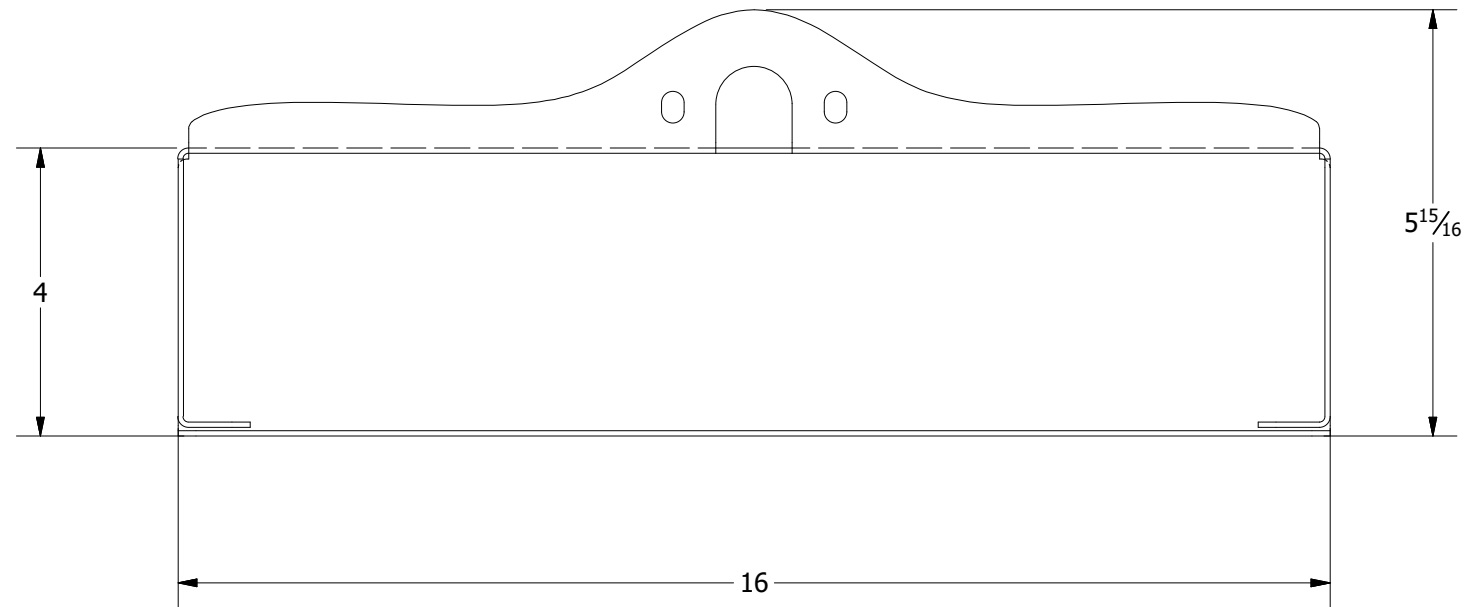
TOLERANCES  
 FRACTIONS ± 1/16"  
 ANGLES ± 0.5°  
 X.XX ± N/A  
 X.XXX ± N/A

|   |                           |           |
|---|---------------------------|-----------|
| DRAWN   | WELBY                     | 5/31/2019 |
| CHECKED   | REID WALKER/BILLY MONFORT |           |
| QA/CWI  | HARVEY STURDIVANT         |           |
| MFG   | JAMES JACO                |           |
| APPROVED  | JIMMY WALKER              |           |
| ALL STRUCTURAL MEMBERS ARE ASTM A-36 CARBON STEEL U.N.O. BASED ON ASME Y14.36M-1989 |                           |           |
| ALL FILLET WELDS ARE 5/16" U.N.O.   |                           |           |

**SAFTCART<sup>TM</sup>**  
 CLARKSDALE, MS 38614  
 800-542-2278  
<http://www.saftcart.com/>  
 DETAILED MANUFACTURING PLANS

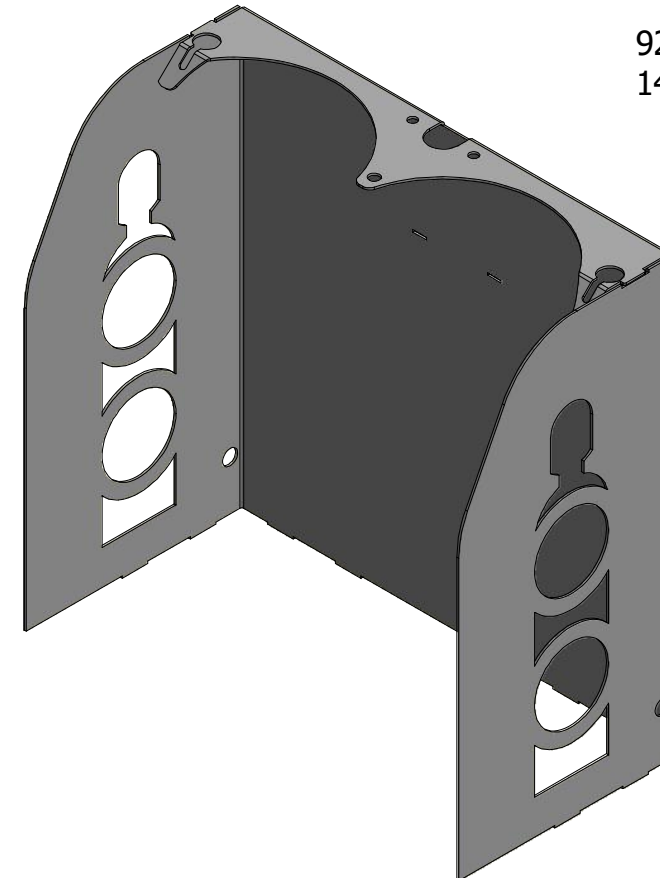
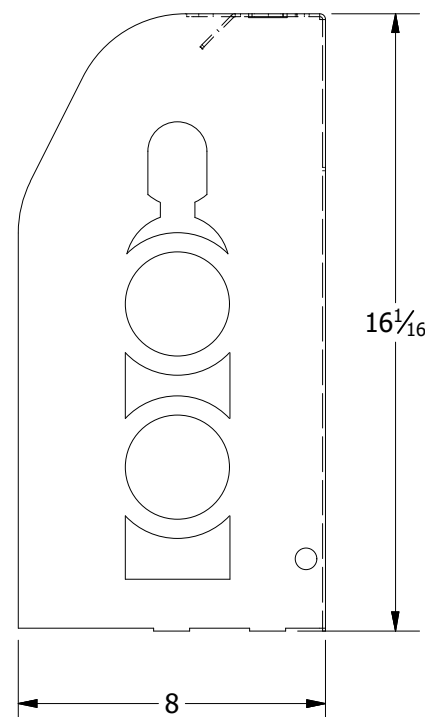
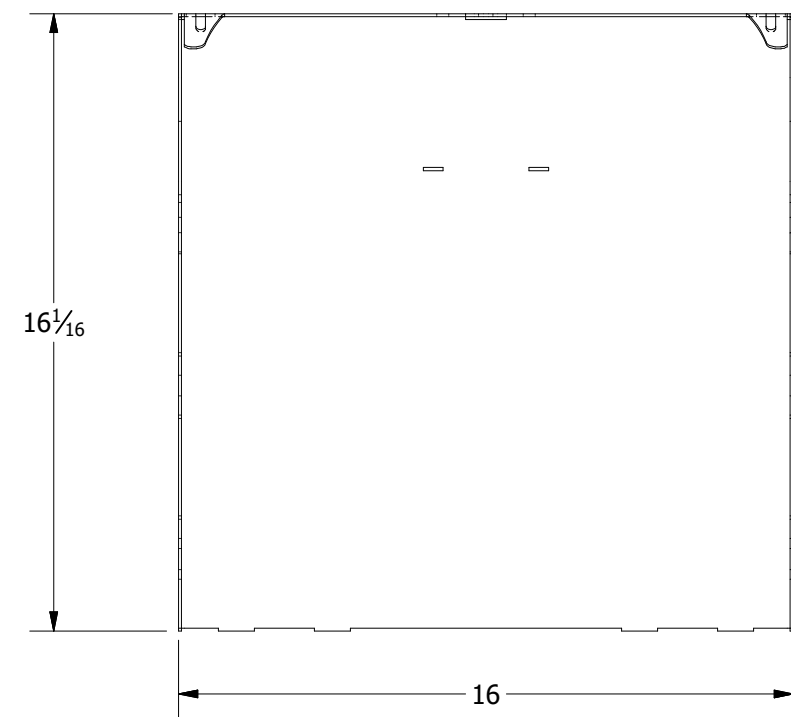
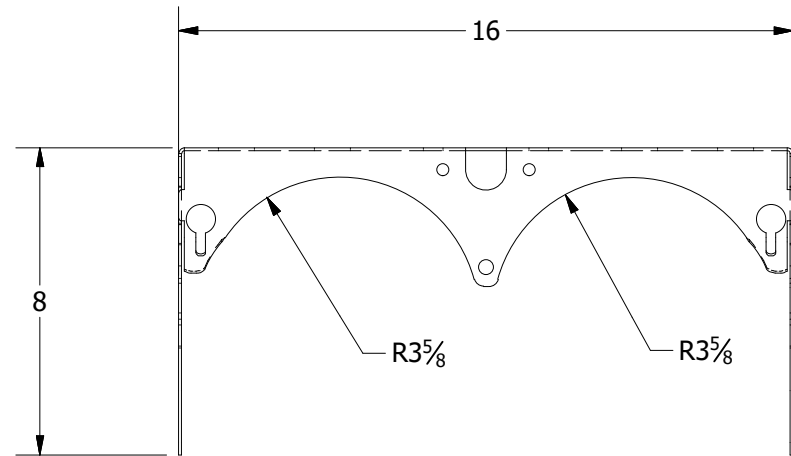
|        |           |                |              |
|--------|-----------|----------------|--------------|
| 920-6B |           |                |              |
| SIZE   | MATERIAL  | DWG NO         | REV          |
| B      | VARIABLES | 920-6B.drawing |              |
| SCALE  | VARIABLES |                | SHEET 1 OF 7 |

920-6B TOOL BOX  
14GA SHEET (LASER/SAFAN)



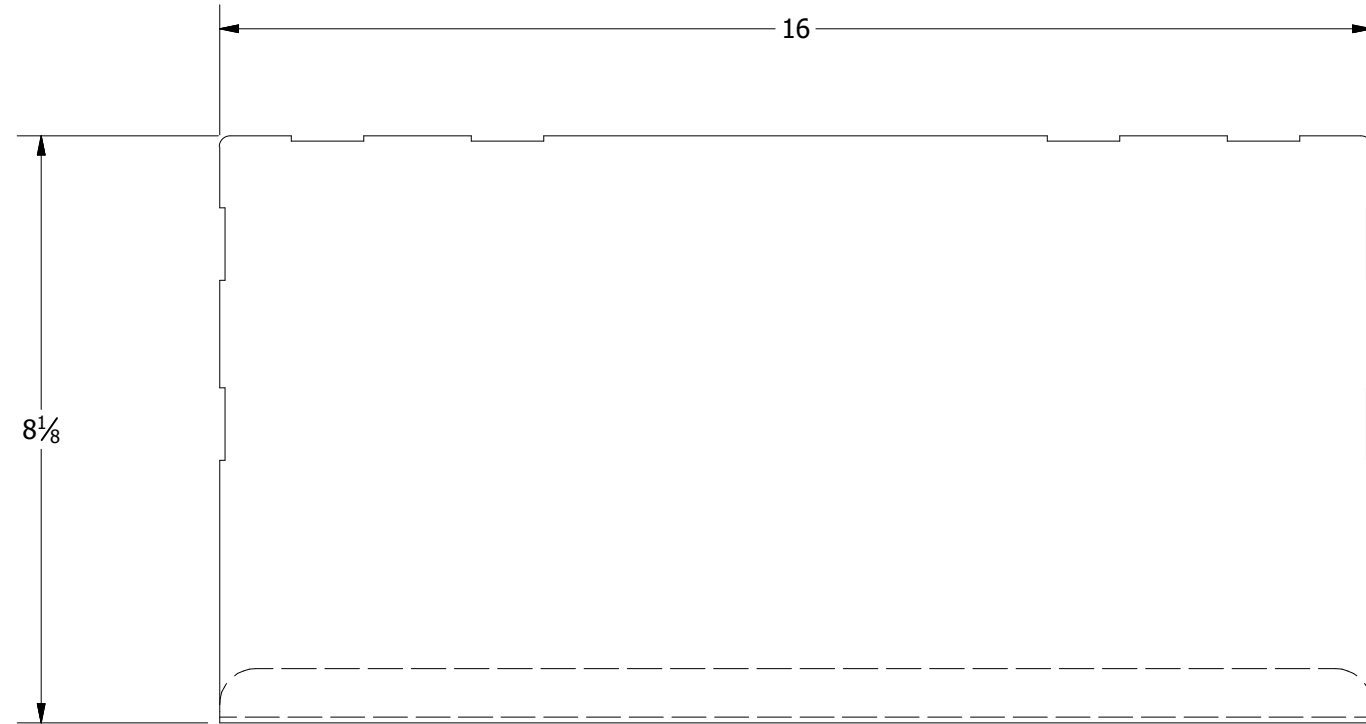
|   |  |
|---|--|
| <p>THE MATERIALS AND INFORMATION CONTAINED IN THESE DOCUMENTS ARE THE SOLE PROPERTY OF SAF-T-CART. ANY DESIGN OR PRINCIPLE CONTAINED IN THE PRINTS IS CONSIDERED CONFIDENTIAL. THIS INFORMATION IS SUMMITTED TO YOU WITH AGREEMENT THAT IS IT NOT TO BE REPRODUCED, COPIED OR RELEASED IN PART OR IN WHOLE TO ANY COMPANY OR INDIVIDUAL. BY ACCEPTING THIS DOCUMENT YOU ARE AGREEING TO THE STATEMENTS ABOVE.</p> <p>DIMENSIONS ARE IN INCHES UNLESS SPECIFIED OTHERWISE DO NOT TAKE DIMENSIONS FROM DRAWING</p> <p>TOLERANCES<br/>FRACTIONS ± 1/16"<br/>ANGLES ± 0.5°<br/>X.XX ± N/A<br/>X.XXX ± N/A</p> | <p>DRAWN<br/>WELBY<br/>5/31/2019</p>   |
|   | <p>CHECKED<br/>REID WALKER/BILLY MONFORT</p>   |
|   | <p>QA/CWI<br/>HARVEY STURDIVANT</p>  |
|   | <p>MFG<br/>JAMES JACO</p>  |
| <p>APPROVED<br/>JIMMY WALKER</p>  | <p>ALL STRUCTURAL MEMBERS ARE ASTM A-36 CARBON STEEL U.N.O. BASED ON ASME Y14.36M-1989</p> |
| <p>ALL FILLET WELDS ARE 5/16" U.N.O.</p>  |  |

|   |          |                |              |
|---|----------|----------------|--------------|
|  <p>CLARKSDALE, MS 38614<br/>800-542-2278<br/><a href="http://www.saftcart.com/">http://www.saftcart.com/</a><br/>DETAILED MANUFACTURING PLANS</p> |          |                |              |
| Z11210019   |          |                |              |
| SIZE  | MATERIAL | DWG NO         | REV          |
| B   | VARIES   | 920-6B.drawing |              |
| SCALE   | VARIES   |                | SHEET 2 OF 7 |

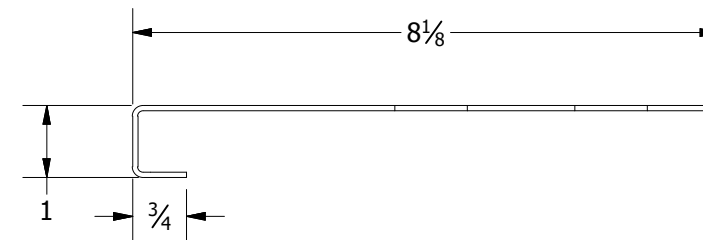
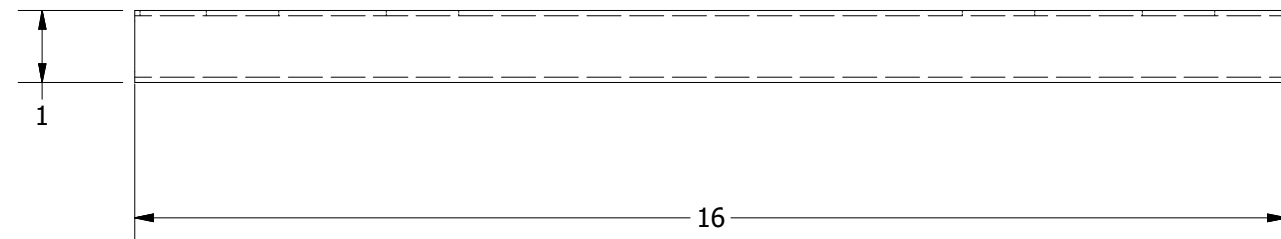
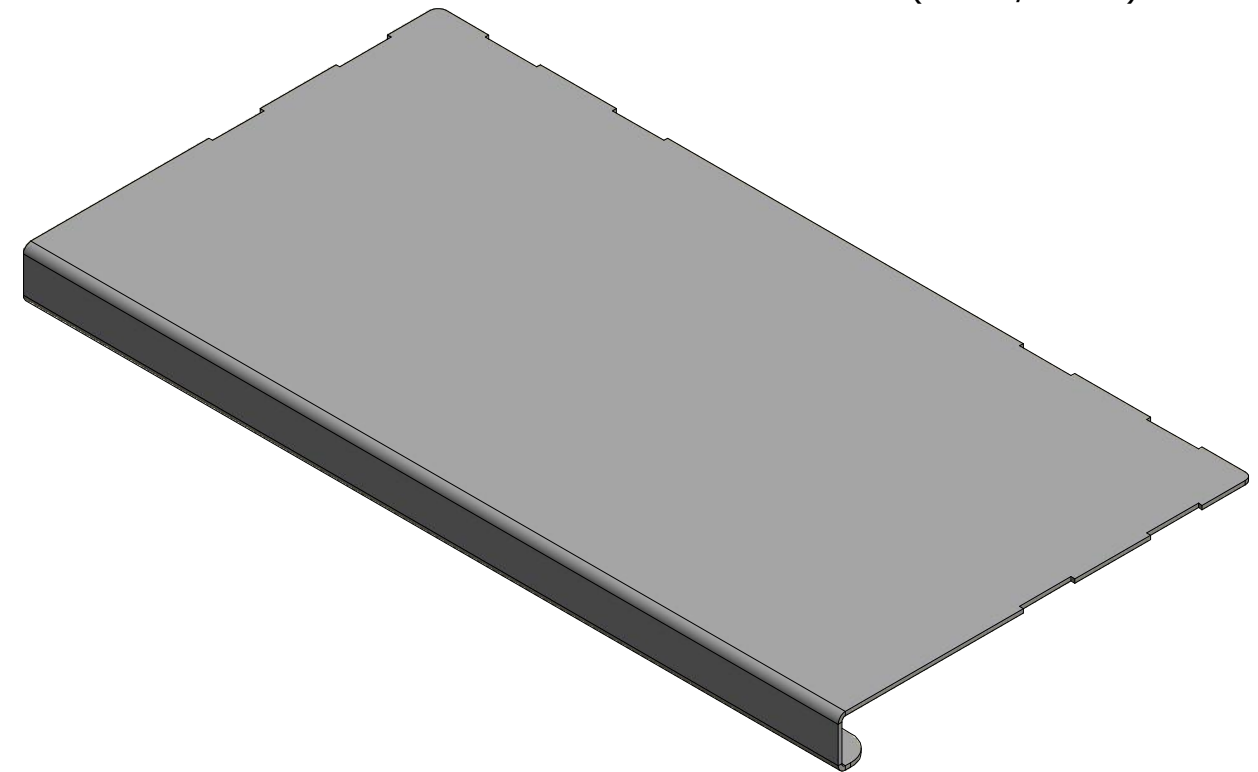


920-6B BODY  
14GA SHEET (LASER/SAFAN)

|   |  |  |                                  |            |
|---|--|--|----------------------------------|------------|
| <p>THE MATERIALS AND INFORMATION CONTAINED IN THESE DOCUMENTS ARE THE SOLE PROPERTY OF SAF-T-CART. ANY DESIGN OR PRINCIPLE CONTAINED IN THE PRINTS IS CONSIDERED CONFIDENTIAL. THIS INFORMATION IS SUMMITTED TO YOU WITH AGREEMENT THAT IS IT NOT TO BE REPRODUCED, COPIED OR RELEASED IN PART OR IN WHOLE TO ANY COMPANY OR INDIVIDUAL. BY ACCEPTING THIS DOCUMENT YOU ARE AGREEING TO THE STATEMENTS ABOVE.</p> <p>DIMENSIONS ARE IN INCHES UNLESS SPECIFIED OTHERWISE DO NOT TAKE DIMENSIONS FROM DRAWING</p> <p>TOLERANCES<br/>FRACTIONS ± 1/16"<br/>ANGLES ± 0.5°<br/>X.XX ± N/A<br/>X.XXX ± N/A</p> | <p>DRAWN<br/>WELBY<br/>5/31/2019</p>   | <p><b>SAFTCART<sup>T.M.</sup></b><br/>CLARKSDALE, MS 38614<br/>800-542-2278<br/><a href="http://www.saftcart.com/">http://www.saftcart.com/</a><br/>DETAILED MANUFACTURING PLANS</p> |                                  |            |
|   | <p>CHECKED<br/>REID WALKER/BILLY MONFORT</p>   |  |                                  |            |
|   | <p>QA/CWI<br/>HARVEY STURDIVANT</p>  |  |                                  |            |
|   | <p>MFG<br/>JAMES JACO</p>  |  |                                  |            |
| <p>APPROVED<br/>JIMMY WALKER</p>  | <p>ALL STRUCTURAL MEMBERS ARE ASTM A-36 CARBON STEEL U.N.O. BASED ON ASME Y14.36M-1989</p> | <p>Z11210020</p>   |                                  |            |
| <p>ALL FILLET WELDS ARE 5/16" U.N.O.</p>  | <p>SIZE<br/>B</p>  | <p>MATERIAL<br/>VARIES</p>   | <p>DWG NO<br/>920-6B.drawing</p> | <p>REV</p> |
|   | <p>SCALE<br/>VARIES</p>  |  | <p>SHEET 3 OF 7</p>              |            |

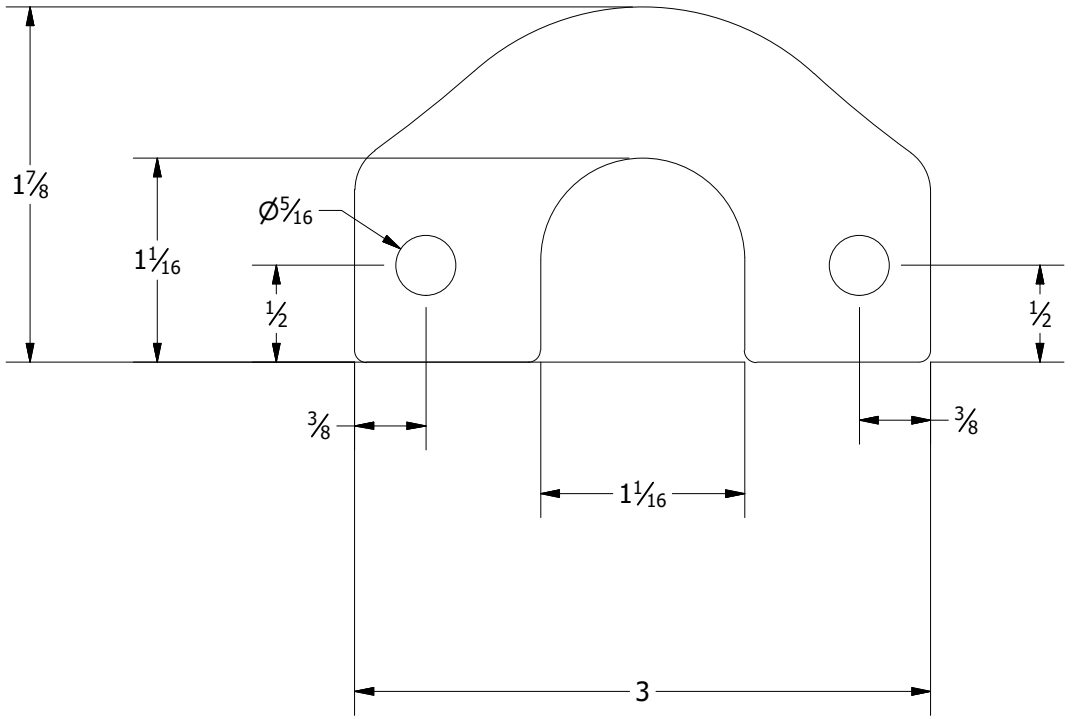


920-6B FLOOR PLATE  
14GA SHEET (LASER/SAFAN)



|   |  |  |                                  |            |
|---|--|--|----------------------------------|------------|
| <p>THE MATERIALS AND INFORMATION CONTAINED IN THESE DOCUMENTS ARE THE SOLE PROPERTY OF SAF-T-CART. ANY DESIGN OR PRINCIPLE CONTAINED IN THE PRINTS IS CONSIDERED CONFIDENTIAL. THIS INFORMATION IS SUMMITTED TO YOU WITH AGREEMENT THAT IS IT NOT TO BE REPRODUCED, COPIED OR RELEASED IN PART OR IN WHOLE TO ANY COMPANY OR INDIVIDUAL. BY ACCEPTING THIS DOCUMENT YOU ARE AGREEING TO THE STATEMENTS ABOVE.</p> <p>DIMENSIONS ARE IN INCHES UNLESS SPECIFIED OTHERWISE DO NOT TAKE DIMENSIONS FROM DRAWING</p> <p>TOLERANCES<br/>FRACTIONS ± 1/16"<br/>ANGLES ± 0.5°<br/>X.XX ± N/A<br/>X.XXX ± N/A</p> | <p>DRAWN<br/>WELBY<br/>5/31/2019</p>   | <p><b>SAFTCART<sup>T.M.</sup></b><br/>CLARKSDALE, MS 38614<br/>800-542-2278<br/><a href="http://www.saftcart.com/">http://www.saftcart.com/</a><br/>DETAILED MANUFACTURING PLANS</p> |                                  |            |
|   | <p>CHECKED<br/>REID WALKER/BILLY MONFORT</p>   |  |                                  |            |
|   | <p>QA/CWI<br/>HARVEY STURDIVANT</p>  |  |                                  |            |
|   | <p>MFG<br/>JAMES JACO</p>  |  |                                  |            |
| <p>APPROVED<br/>JIMMY WALKER</p>  | <p>ALL STRUCTURAL MEMBERS ARE ASTM A-36 CARBON STEEL U.N.O. BASED ON ASME Y14.36M-1989</p> | <p>Z11210021</p>   |                                  |            |
| <p>ALL FILLET WELDS ARE 5/16" U.N.O.</p>  | <p>SIZE<br/>B</p>  | <p>MATERIAL<br/>VARIES</p>   | <p>DWG NO<br/>920-6B.drawing</p> | <p>REV</p> |
|   | <p>SCALE<br/>VARIES</p>  | <p>SHEET 4 OF 7</p>  |                                  |            |

BOX CART HANDLE BRACE  
14 GA SHEET (LASER)



THE MATERIALS AND INFORMATION CONTAINED IN THESE DOCUMENTS ARE THE SOLE PROPERTY OF SAF-T-CART. ANY DESIGN OR PRINCIPLE CONTAINED IN THE PRINTS IS CONSIDERED CONFIDENTIAL. THIS INFORMATION IS SUMMITTED TO YOU WITH AGREEMENT THAT IS IT NOT TO BE REPRODUCED, COPIED OR RELEASED IN PART OR IN WHOLE TO ANY COMPANY OR INDIVIDUAL. BY ACCEPTING THIS DOCUMENT YOU ARE AGREEING TO THE STATEMENTS ABOVE.

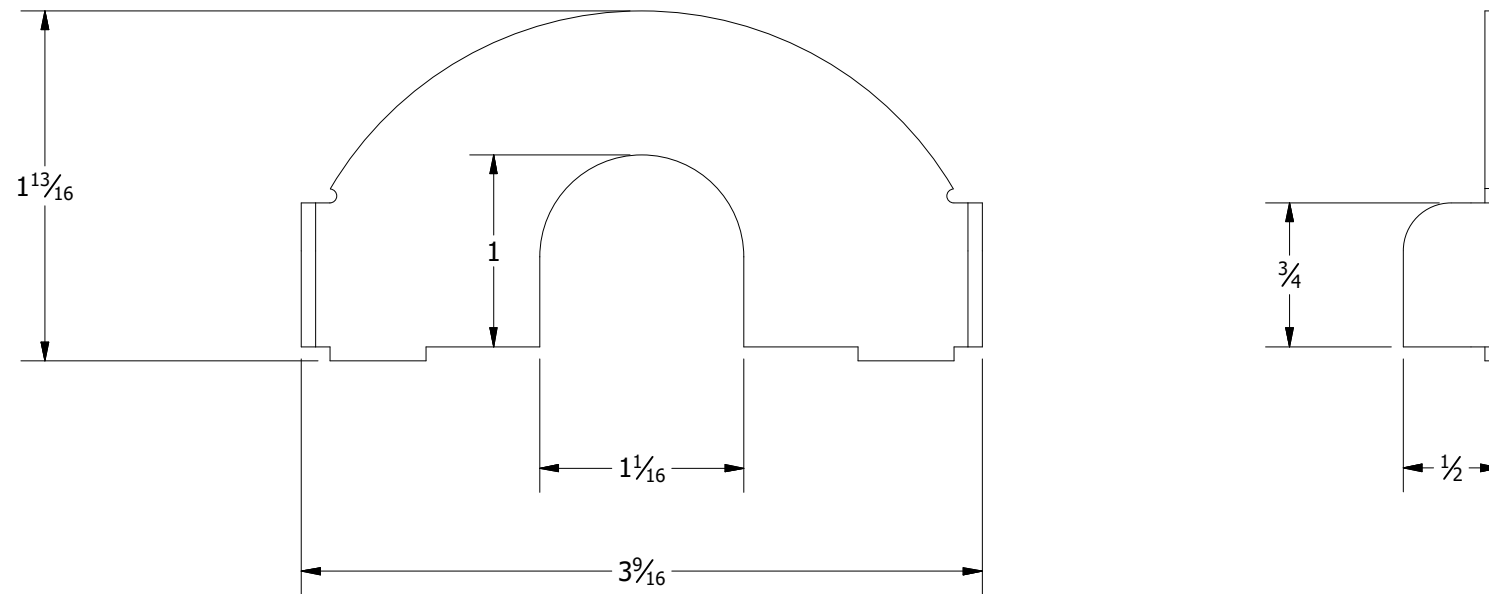
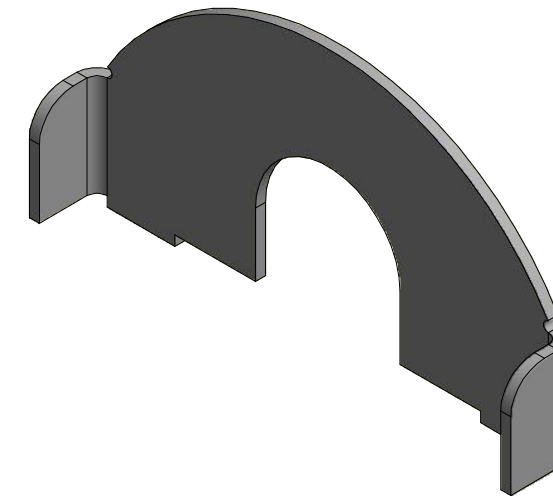
DIMENSIONS ARE IN INCHES UNLESS SPECIFIED OTHERWISE DO NOT TAKE DIMENSIONS FROM DRAWING  
TOLERANCES  
FRACTIONS ± 1/16"  
ANGLES ± 0.5°  
X.XX ± N/A  
X.XXX ± N/A

|   |                           |           |
|---|---------------------------|-----------|
| DRAWN   | WELBY                     | 5/31/2019 |
| CHECKED   | REID WALKER/BILLY MONFORT |           |
| QA/CWI  | HARVEY STURDIVANT         |           |
| MFG   | JAMES JACO                |           |
| APPROVED  | JIMMY WALKER              |           |
| ALL STRUCTURAL MEMBERS ARE ASTM A-36 CARBON STEEL U.N.O. BASED ON ASME Y14.36M-1989 |                           |           |
| ALL FILLET WELDS ARE 5/16" U.N.O.   |                           |           |



|           |          |                |              |
|-----------|----------|----------------|--------------|
| Z11210022 |          |                |              |
| SIZE      | MATERIAL | DWG NO         | REV          |
| B         | VARIES   | 920-6B.drawing |              |
| SCALE     | VARIES   |                | SHEET 5 OF 7 |

BOX CART HANDLE BRACKET  
14 GA SHEET (LASER/SAFAN)



THE MATERIALS AND INFORMATION CONTAINED IN THESE DOCUMENTS ARE THE SOLE PROPERTY OF SAF-T-CART. ANY DESIGN OR PRINCIPLE CONTAINED IN THE PRINTS IS CONSIDERED CONFIDENTIAL. THIS INFORMATION IS SUMMITTED TO YOU WITH AGREEMENT THAT IS IT NOT TO BE REPRODUCED, COPIED OR RELEASED IN PART OR IN WHOLE TO ANY COMPANY OR INDIVIDUAL. BY ACCEPTING THIS DOCUMENT YOU ARE AGREEING TO THE STATEMENTS ABOVE.

DIMENSIONS ARE IN INCHES UNLESS SPECIFIED OTHERWISE DO NOT TAKE DIMENSIONS FROM DRAWING

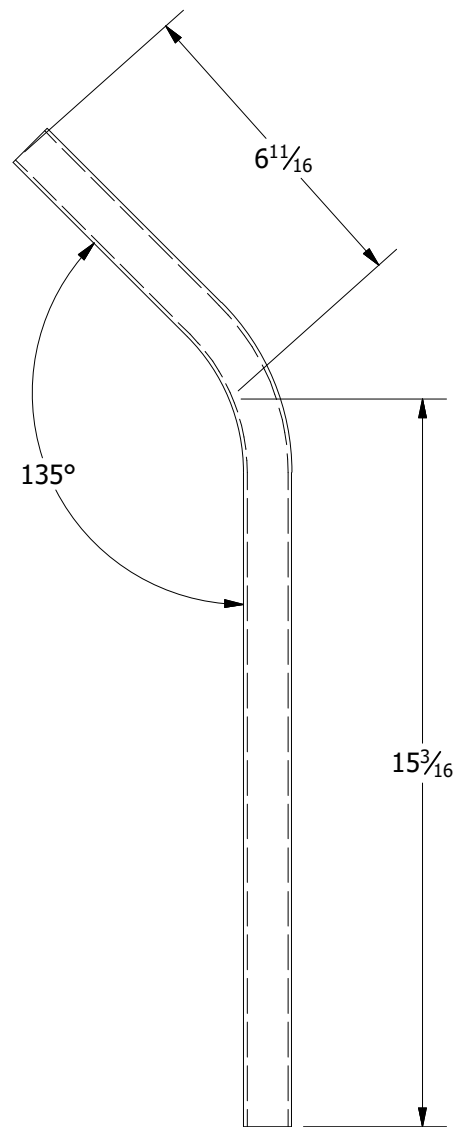
TOLERANCES  
FRACTIONS  $\pm 1/16"$   
ANGLES  $\pm 0.5^\circ$   
X.XX  $\pm N/A$   
X.XXX  $\pm N/A$

|          |   |           |
|----------|---|-----------|
| DRAWN    | WELBY   | 5/31/2019 |
| CHECKED  | REID WALKER/BILLY MONFORT   |           |
| QA/CWI   | HARVEY STURDIVANT   |           |
| MFG      | JAMES JACO  |           |
| APPROVED | JIMMY WALKER  |           |
|          | ALL STRUCTURAL MEMBERS ARE ASTM A-36 CARBON STEEL U.N.O. BASED ON ASME Y14.36M-1989 |           |
|          | ALL FILLET WELDS ARE 5/16" U.N.O.   |           |



Z11210023

|       |          |                |     |
|-------|----------|----------------|-----|
| SIZE  | MATERIAL | DWG NO         | REV |
| B     | VARIES   | 920-6B.drawing |     |
| SCALE | VARIES   | SHEET 6 OF 7   |     |



920-6B OR 935-8B HANDLE  
 1" ROUND TUBE 14GA  
 22-1/2" BEFORE BEND

|   |  |
|---|--|
| <p>THE MATERIALS AND INFORMATION CONTAINED IN THESE DOCUMENTS ARE THE SOLE PROPERTY OF SAF-T-CART. ANY DESIGN OR PRINCIPLE CONTAINED IN THE PRINTS IS CONSIDERED CONFIDENTIAL. THIS INFORMATION IS SUMMITTED TO YOU WITH AGREEMENT THAT IS IT NOT TO BE REPRODUCED, COPIED OR RELEASED IN PART OR IN WHOLE TO ANY COMPANY OR INDIVIDUAL. BY ACCEPTING THIS DOCUMENT YOU ARE AGREEING TO THE STATEMENTS ABOVE.</p> <p>DIMENSIONS ARE IN INCHES UNLESS SPECIFIED OTHERWISE DO NOT TAKE DIMENSIONS FROM DRAWING</p> <p>TOLERANCES<br/>         FRACTIONS ± 1/16"<br/>         ANGLES ± 0.5°<br/>         X.XX ± N/A<br/>         X.XXX ± N/A</p> | <p>DRAWN<br/>         WELBY<br/>         5/31/2019</p>                                     |
|   | <p>CHECKED<br/>         REID WALKER/BILLY MONFORT</p>                                      |
|   | <p>QA/CWI<br/>         HARVEY STURDIVANT</p>   |
|   | <p>MFG<br/>         JAMES JACO</p>   |
| <p>APPROVED<br/>         JIMMY WALKER</p>   | <p>ALL STRUCTURAL MEMBERS ARE ASTM A-36 CARBON STEEL U.N.O. BASED ON ASME Y14.36M-1989</p> |
| <p>ALL FILLET WELDS ARE 5/16" U.N.O.</p>  |  |

**SAFTCART<sup>T.M.</sup>**  
 CLARKSDALE, MS 38614  
 800-542-2278  
<http://www.saftcart.com/>  
 DETAILED MANUFACTURING PLANS

Z31210006

|                 |                    |                          |     |
|-----------------|--------------------|--------------------------|-----|
| SIZE<br>B       | MATERIAL<br>VARIES | DWG NO<br>920-6B.drawing | REV |
| SCALE<br>VARIES | SHEET 7 OF 7       |                          |     |