

THE MATERIALS AND INFORMATION CONTAINED IN THESE DOCUMENTS ARE THE SOLE PROPERTY OF SAF-T-CART. ANY DESIGN OR PRINCIPLE CONTAINED IN THE PRINTS IS CONSIDERED CONFIDENTIAL. THIS INFORMATION IS SUMMITTED TO YOU WITH AGREEMENT THAT IS IT NOT TO BE REPRODUCED, COPIED OR RELEASED IN PART OR IN WHOLE TO ANY COMPANY OR INDIVIDUAL. BY ACCEPTING THIS DOCUMENT YOU ARE AGREEING TO THE STATEMENTS ABOVE.

DIMENSIONS ARE IN INCHES UNLESS SPECIFIED OTHERWISE DO NOT TAKE DIMENSIONS FROM DRAWING

TOLERANCES  
 FRACTIONS ± 1/16"  
 ANGLES ± 0.5°  
 X.XX ± N/A  
 X.XXX ± N/A

**DRAWN**  
 Cortney  
 5/10/2019

**CHECKED**  
 REID WALKER/BILLY MONFORT  
 QA/CWI

**HARVEY STURDIVANT**  
 MFG

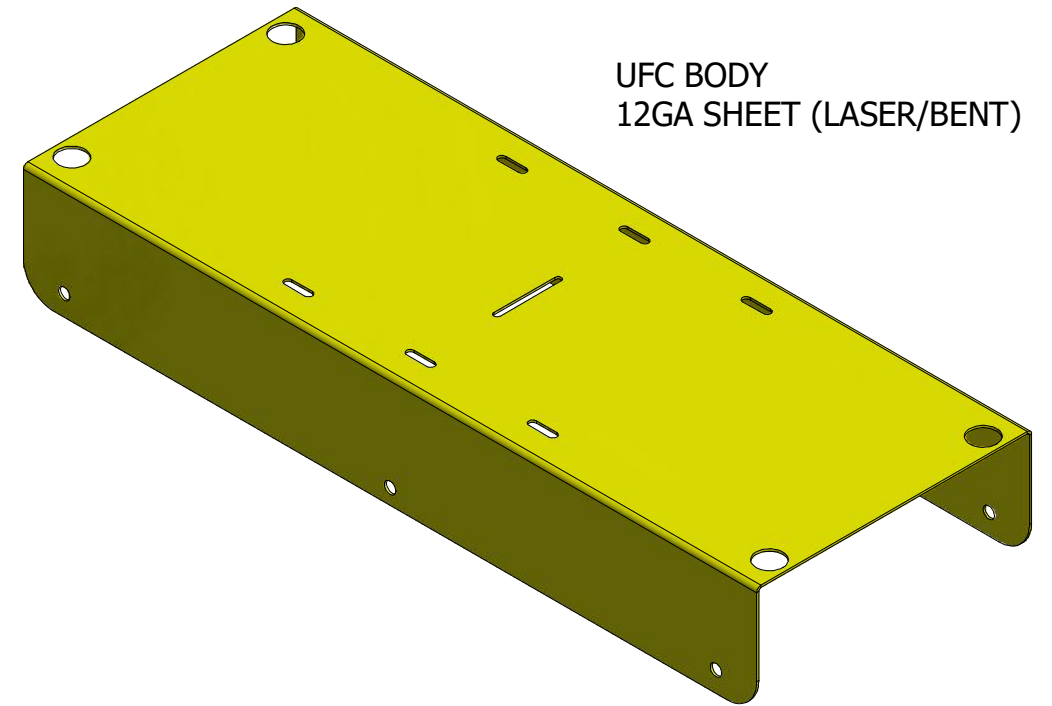
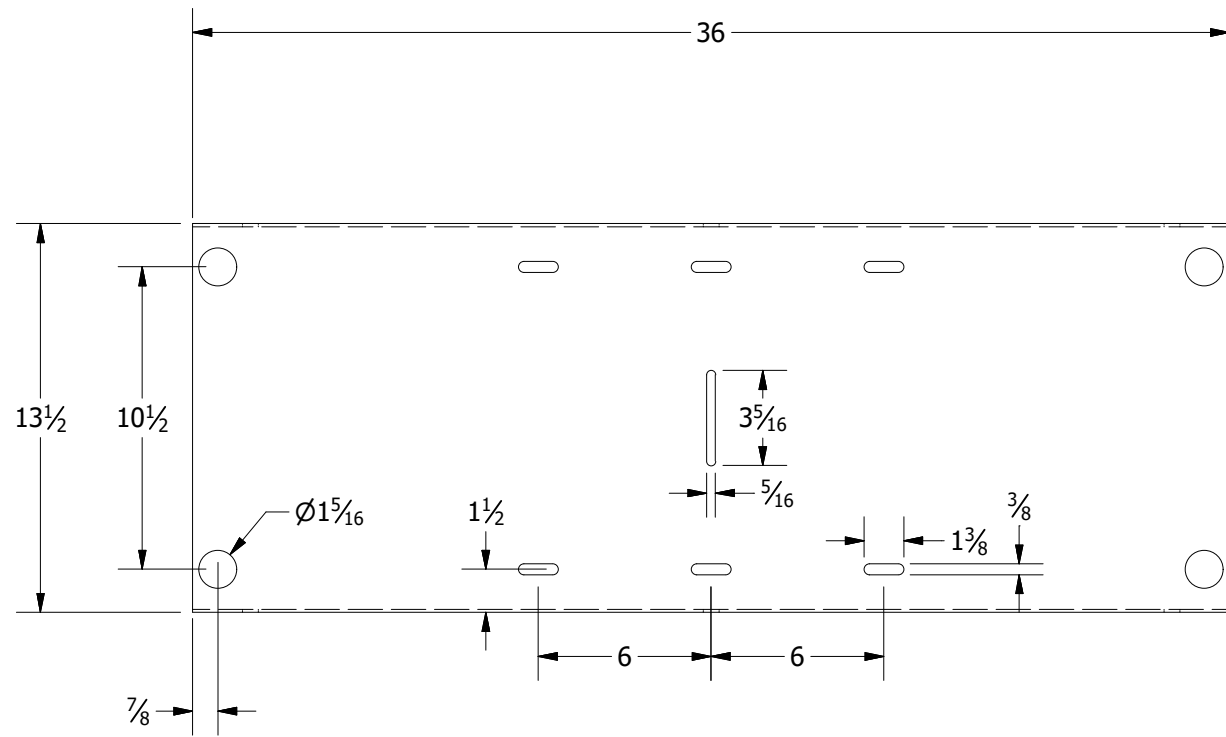
**JAMES JACO**  
 APPROVED

**JIMMY WALKER**  
 ALL STRUCTURAL MEMBERS ARE ASTM A-36 CARBON STEEL U.N.O. BASED ON ASME Y14.36M-1989

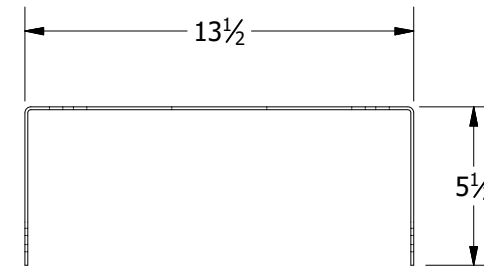
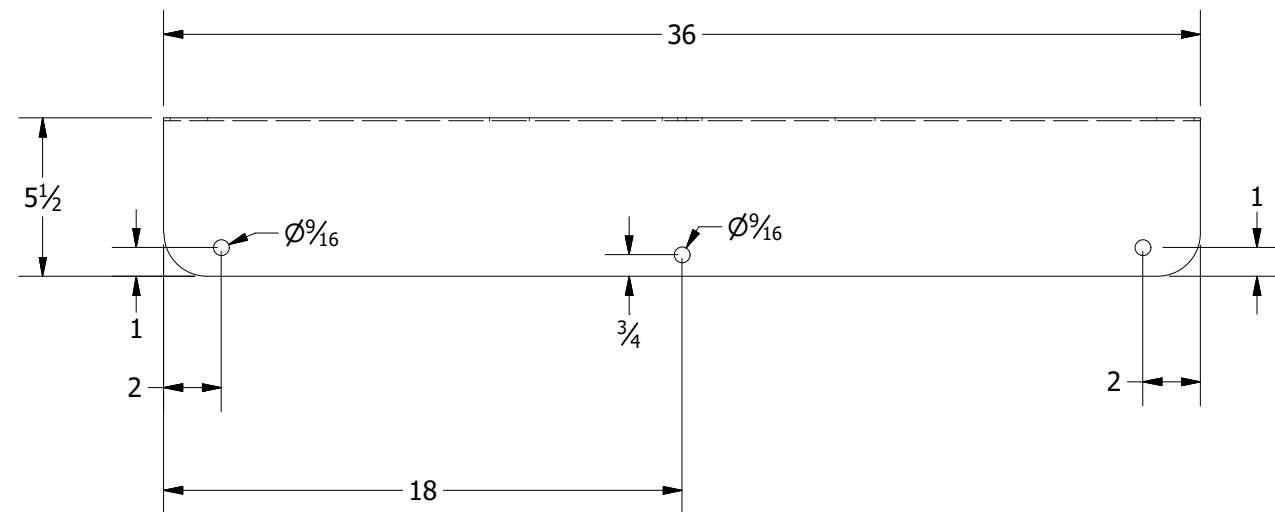
ALL FILLET WELDS ARE 5/16" U.N.O.

CLARKSDALE, MS 38614  
 800-542-2278  
<http://www.saftcart.com/>  
 DETAILED MANUFACTURING PLANS

UFC			
SIZE B	MATERIAL VARIES	DWG NO UFC.drawing	REV
SCALE VARIES			SHEET 1 OF 7



UFC BODY  
12GA SHEET (LASER/BENT)



THE MATERIALS AND INFORMATION CONTAINED IN THESE DOCUMENTS ARE THE SOLE PROPERTY OF SAF-T-CART. ANY DESIGN OR PRINCIPLE CONTAINED IN THE PRINTS IS CONSIDERED CONFIDENTIAL. THIS INFORMATION IS SUMMITTED TO YOU WITH AGREEMENT THAT IS IT NOT TO BE REPRODUCED, COPIED OR RELEASED IN PART OR IN WHOLE TO ANY COMPANY OR INDIVIDUAL. BY ACCEPTING THIS DOCUMENT YOU ARE AGREEING TO THE STATEMENTS ABOVE.

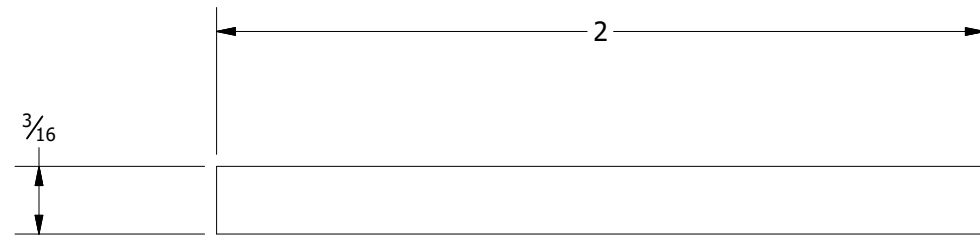
DIMENSIONS ARE IN INCHES UNLESS SPECIFIED OTHERWISE DO NOT TAKE DIMENSIONS FROM DRAWING  
TOLERANCES  
FRACTIONS ± 1/16"  
ANGLES ± 0.5°  
X.XX ± N/A  
X.XXX ± N/A

DRAWN	5/10/2019
COURT	
CHECKED	
REID WALKER/BILLY MONFORT	
QA/CWI	
HARVEY STURDIVANT	
MFG	
JAMES JACO	
APPROVED	
JIMMY WALKER	
ALL STRUCTURAL MEMBERS ARE ASTM A-36 CARBON STEEL U.N.O. BASED ON ASME Y14.36M-1989	
ALL FILLET WELDS ARE 5/16" U.N.O.	

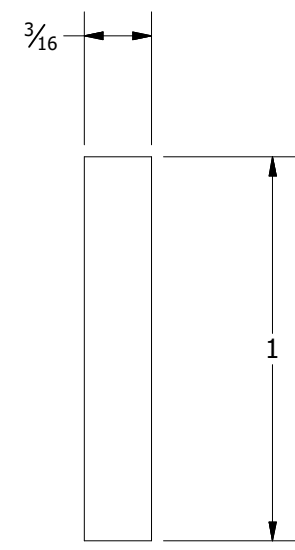
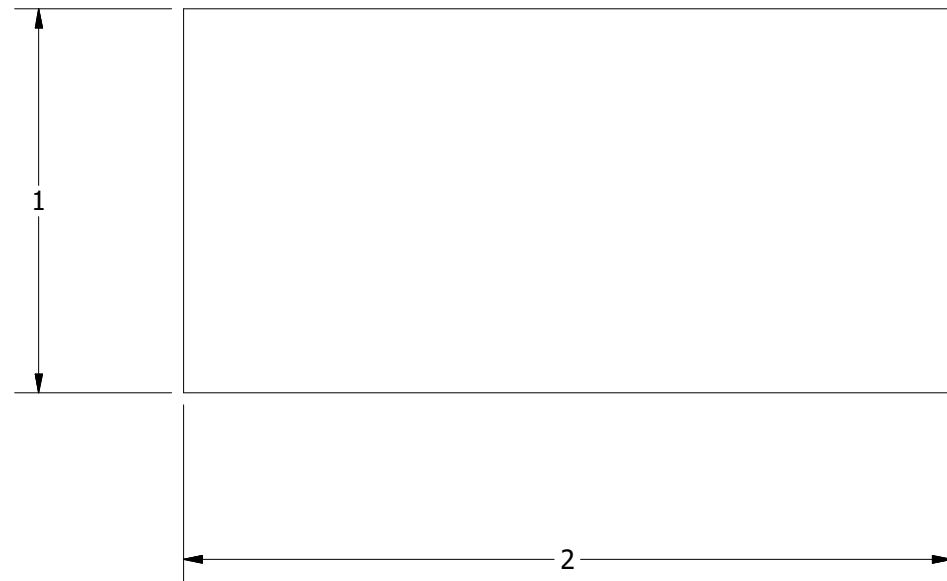
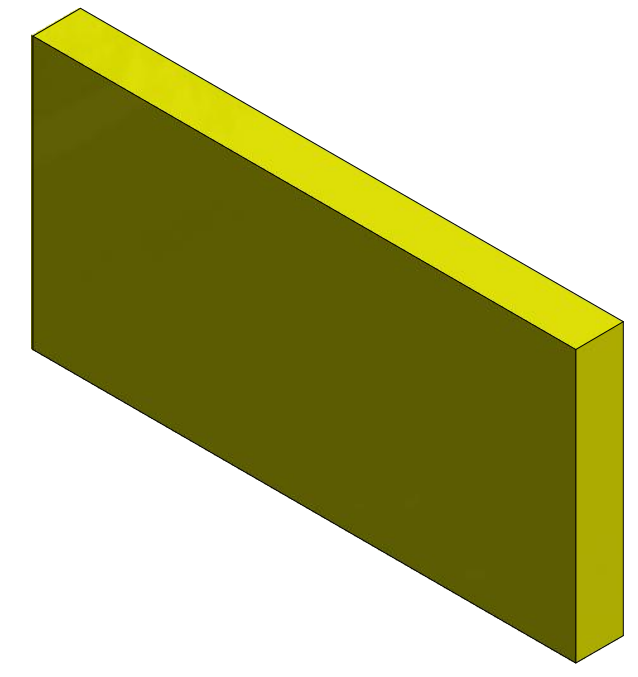


Z11310019

SIZE	MATERIAL	DWG NO	REV
B	VARIES	UFC.drawing	
SCALE	VARIES	SHEET 2 OF 7	



**HANDLE STOP**  
 3/16" X 1" X 2" (LASER OR IRON WORKER)



THE MATERIALS AND INFORMATION CONTAINED IN THESE DOCUMENTS ARE THE SOLE PROPERTY OF SAF-T-CART. ANY DESIGN OR PRINCIPLE CONTAINED IN THE PRINTS IS CONSIDERED CONFIDENTIAL. THIS INFORMATION IS SUMMITTED TO YOU WITH AGREEMENT THAT IS IT NOT TO BE REPRODUCED, COPIED OR RELEASED IN PART OR IN WHOLE TO ANY COMPANY OR INDIVIDUAL. BY ACCEPTING THIS DOCUMENT YOU ARE AGREEING TO THE STATEMENTS ABOVE.

DIMENSIONS ARE IN INCHES UNLESS SPECIFIED OTHERWISE DO NOT TAKE DIMENSIONS FROM DRAWING

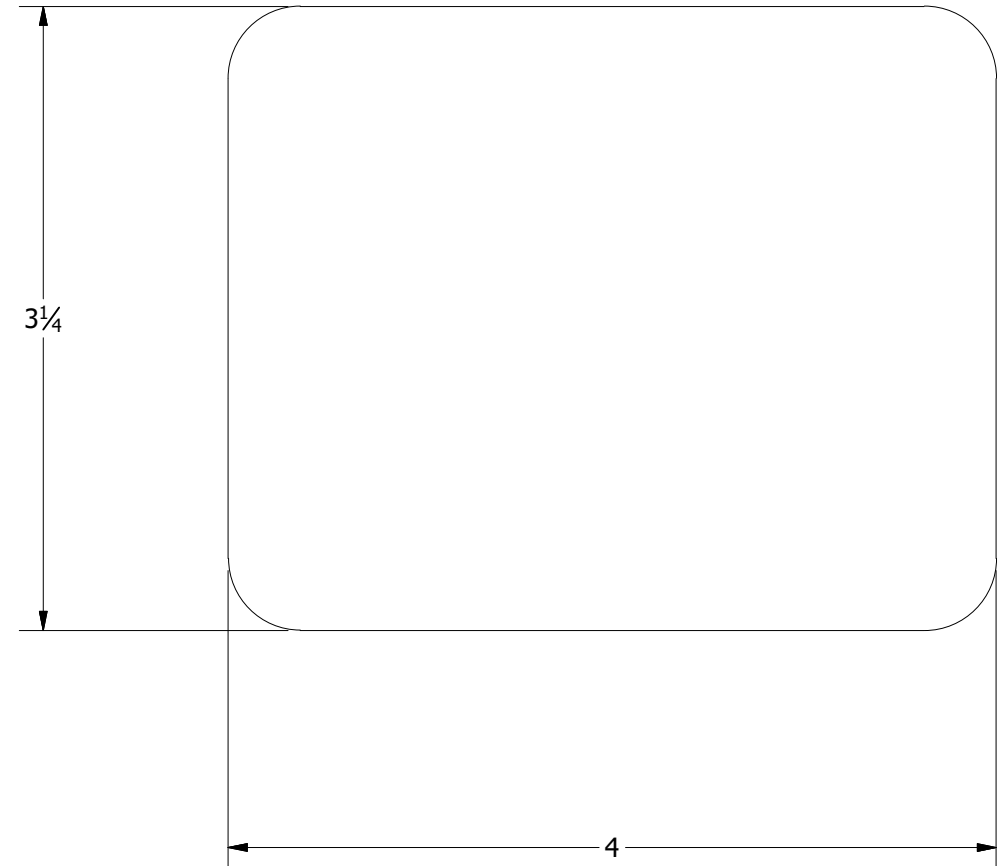
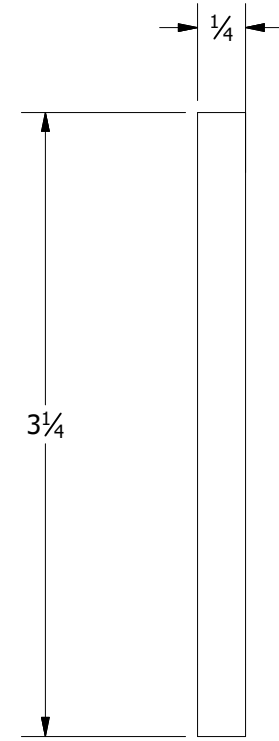
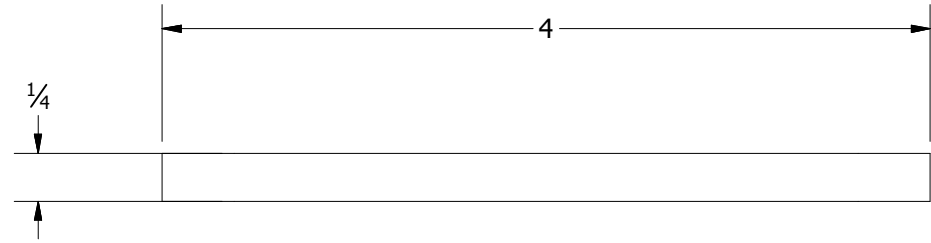
TOLERANCES  
 FRACTIONS ± 1/16"  
 ANGLES ± 0.5°  
 X.XX ± N/A  
 X.XXX ± N/A

<b>DRAWN</b> Cortney	5/10/2019
<b>CHECKED</b> REID WALKER/BILLY MONFORT	
<b>QA/CWI</b> HARVEY STURDIVANT	
<b>MFG</b> JAMES JACO	
<b>APPROVED</b> JIMMY WALKER	
ALL STRUCTURAL MEMBERS ARE ASTM A-36 CARBON STEEL U.N.O. BASED ON ASME Y14.36M-1989	
ALL FILLET WELDS ARE 5/16" U.N.O.	

CLARKSDALE, MS 38614  
 800-542-2278  
<http://www.saftcart.com/>  
 DETAILED MANUFACTURING PLANS

Z11610019			
SIZE B	MATERIAL VARIES	DWG NO UFC.drawing	REV
SCALE VARIES	SHEET 3 OF 7		

FEEDER MOUNT PLATE 1  
 1/4" PLATE (LASER)  
 WELDED TO FEEDER PLATE 2 (Z11710002)



THE MATERIALS AND INFORMATION CONTAINED IN THESE DOCUMENTS ARE THE SOLE PROPERTY OF SAF-T-CART. ANY DESIGN OR PRINCIPLE CONTAINED IN THE PRINTS IS CONSIDERED CONFIDENTIAL. THIS INFORMATION IS SUMMITTED TO YOU WITH AGREEMENT THAT IS IT NOT TO BE REPRODUCED, COPIED OR RELEASED IN PART OR IN WHOLE TO ANY COMPANY OR INDIVIDUAL. BY ACCEPTING THIS DOCUMENT YOU ARE AGREEING TO THE STATEMENTS ABOVE.

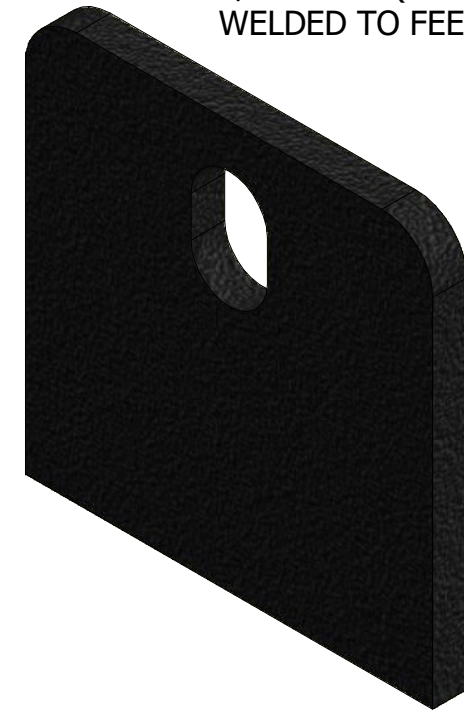
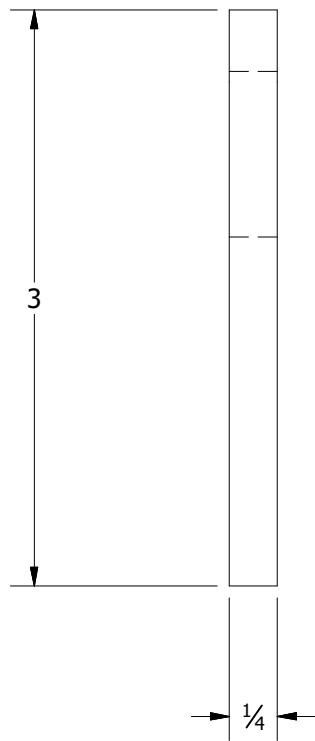
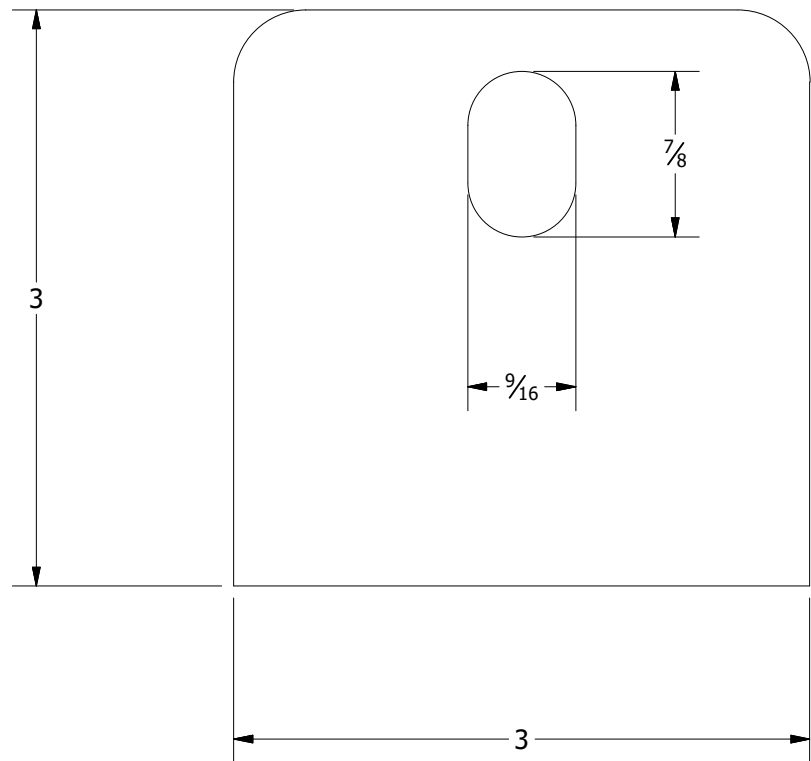
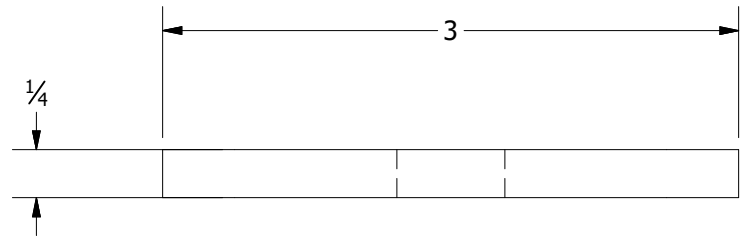
DIMENSIONS ARE IN INCHES UNLESS SPECIFIED OTHERWISE DO NOT TAKE DIMENSIONS FROM DRAWING

TOLERANCES  
 FRACTIONS ± 1/16"  
 ANGLES ± 0.5°  
 X.XX ± N/A  
 X.XXX ± N/A

DRAWN	Cortney	5/10/2019
CHECKED	REID WALKER/BILLY MONFORT	
QA/CWI	HARVEY STURDIVANT	
MFG	JAMES JACO	
APPROVED	JIMMY WALKER	
ALL STRUCTURAL MEMBERS ARE ASTM A-36 CARBON STEEL U.N.O. BASED ON ASME Y14.36M-1989		
ALL FILLET WELDS ARE 5/16" U.N.O.		

CLARKSDALE, MS 38614  
 800-542-2278  
<http://www.saftcart.com/>  
 DETAILED MANUFACTURING PLANS

Z11710001			
SIZE	MATERIAL	DWG NO	REV
B	VARIES	UFC.drawing	
SCALE	VARIES		SHEET 4 OF 7



FEEDER MOUNT PLATE 2  
 1/4" PLATE (LASER)  
 WELDED TO FEEDER PLATE 1 (Z11710001)

THE MATERIALS AND INFORMATION CONTAINED IN THESE DOCUMENTS ARE THE SOLE PROPERTY OF SAF-T-CART. ANY DESIGN OR PRINCIPLE CONTAINED IN THE PRINTS IS CONSIDERED CONFIDENTIAL. THIS INFORMATION IS SUMMITTED TO YOU WITH AGREEMENT THAT IS IT NOT TO BE REPRODUCED, COPIED OR RELEASED IN PART OR IN WHOLE TO ANY COMPANY OR INDIVIDUAL. BY ACCEPTING THIS DOCUMENT YOU ARE AGREEING TO THE STATEMENTS ABOVE.

DIMENSIONS ARE IN INCHES UNLESS SPECIFIED OTHERWISE DO NOT TAKE DIMENSIONS FROM DRAWING  
 TOLERANCES  
 FRACTIONS ± 1/16"  
 ANGLES ± 0.5°  
 X.XX ± N/A  
 X.XXX ± N/A

DRAWN	Cortney	5/10/2019
CHECKED	REID WALKER/BILLY MONFORT	
QA/CWI	HARVEY STURDIVANT	
MFG	JAMES JACO	
APPROVED	JIMMY WALKER	
ALL STRUCTURAL MEMBERS ARE ASTM A-36 CARBON STEEL U.N.O. BASED ON ASME Y14.36M-1989		
ALL FILLET WELDS ARE 5/16" U.N.O.		

CLARKSDALE, MS 38614  
 800-542-2278  
<http://www.saftcart.com/>  
 DETAILED MANUFACTURING PLANS

Z11710002			
SIZE	MATERIAL	DWG NO	REV
B	VARIES	UFC.drawing	
SCALE	VARIES		SHEET 5 OF 7

4

3

2

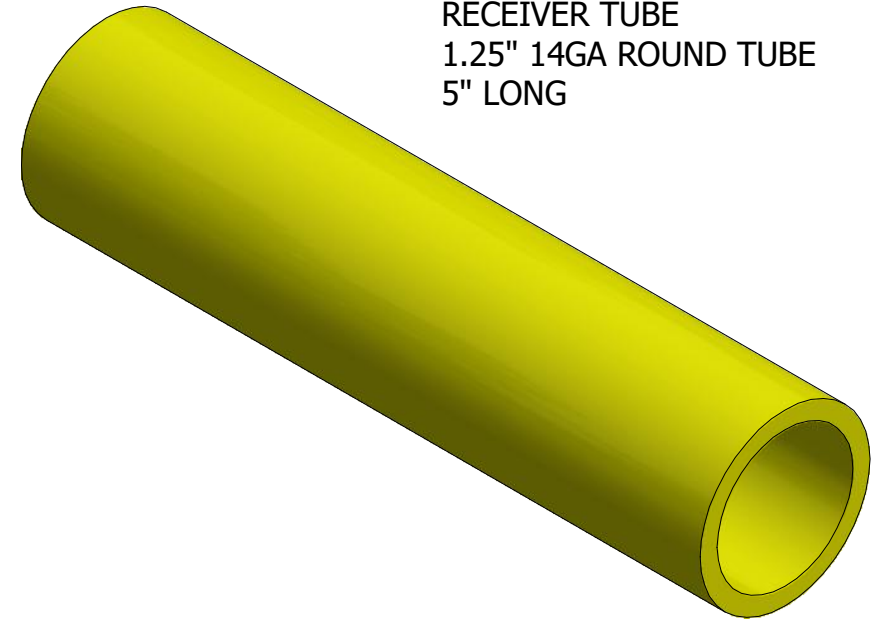
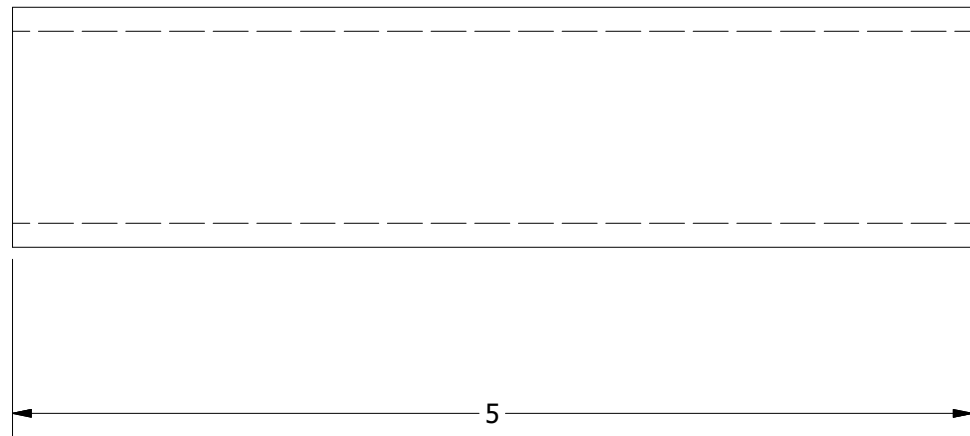
1

B

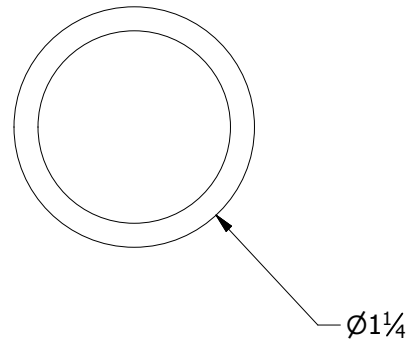
B

A

A



RECEIVER TUBE  
 1.25" 14GA ROUND TUBE  
 5" LONG



THE MATERIALS AND INFORMATION CONTAINED IN THESE DOCUMENTS ARE THE SOLE PROPERTY OF SAF-T-CART. ANY DESIGN OR PRINCIPLE CONTAINED IN THE PRINTS IS CONSIDERED CONFIDENTIAL. THIS INFORMATION IS SUBMITTED TO YOU WITH AGREEMENT THAT IS IT NOT TO BE REPRODUCED, COPIED OR RELEASED IN PART OR IN WHOLE TO ANY COMPANY OR INDIVIDUAL. BY ACCEPTING THIS DOCUMENT YOU ARE AGREEING TO THE STATEMENTS ABOVE.

DIMENSIONS ARE IN INCHES UNLESS SPECIFIED OTHERWISE DO NOT TAKE DIMENSIONS FROM DRAWING

TOLERANCES  
 FRACTIONS  $\pm 1/16"$   
 ANGLES  $\pm 0.5^\circ$   
 X.XX  $\pm N/A$   
 X.XXX  $\pm N/A$

**DRAWN**  
 Cortney 5/10/2019

**CHECKED**  
 REID WALKER/BILLY MONFORT

**QA/CWI**  
 HARVEY STURDIVANT

**MFG**  
 JAMES JACO

**APPROVED**  
 JIMMY WALKER

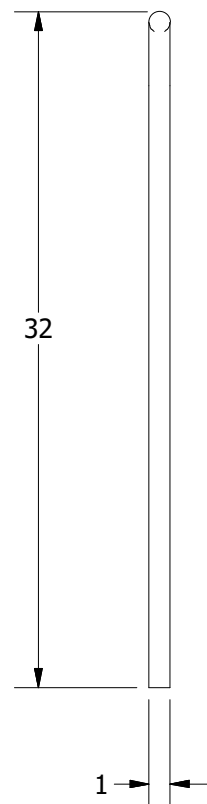
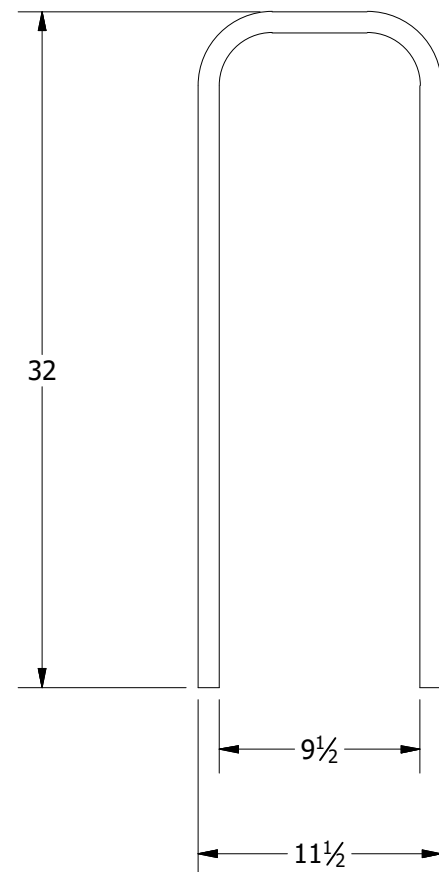
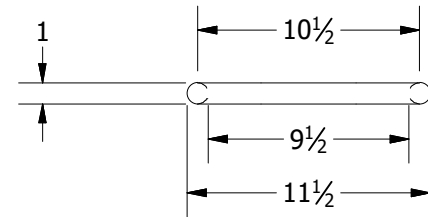
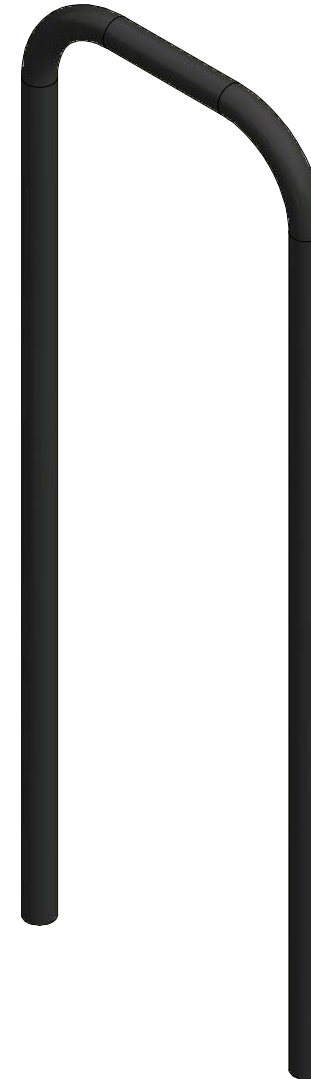
ALL STRUCTURAL MEMBERS ARE ASTM A-36 CARBON STEEL U.N.O. BASED ON ASME Y14.36M-1989


ALL FILLET WELDS ARE 5/16" U.N.O.

CLARKSDALE, MS 38614  
 800-542-2278  
<http://www.saftcart.com/>  
 DETAILED MANUFACTURING PLANS

Z31210003			
SIZE B	MATERIAL VARIES	DWG NO UFC.drawing	REV
SCALE VARIES			SHEET 6 OF 7

HANDLE  
1" 14GA ROUND TUBE



<p>THE MATERIALS AND INFORMATION CONTAINED IN THESE DOCUMENTS ARE THE SOLE PROPERTY OF SAF-T-CART. ANY DESIGN OR PRINCIPLE CONTAINED IN THE PRINTS IS CONSIDERED CONFIDENTIAL. THIS INFORMATION IS SUMMITTED TO YOU WITH AGREEMENT THAT IS IT NOT TO BE REPRODUCED, COPIED OR RELEASED IN PART OR IN WHOLE TO ANY COMPANY OR INDIVIDUAL. BY ACCEPTING THIS DOCUMENT YOU ARE AGREEING TO THE STATEMENTS ABOVE.</p> <p>DIMENSIONS ARE IN INCHES UNLESS SPECIFIED OTHERWISE DO NOT TAKE DIMENSIONS FROM DRAWING</p> <p>TOLERANCES FRACTIONS ± 1/16" ANGLES ± 0.5° X.XX ± N/A X.XXX ± N/A</p>	<p>DRAWN court_000 5/10/2019</p>	 <p>CLARKSDALE, MS 38614 800-542-2278 <a href="http://www.saftcart.com/">http://www.saftcart.com/</a> DETAILED MANUFACTURING PLANS</p>				
	<p>CHECKED REID WALKER/BILLY MONFORT QA/CWI HARVEY STURDIVANT MFG</p>				<p>APPROVED JIMMY WALKER</p>	<p>Z31210004</p>
	<p>ALL STRUCTURAL MEMBERS ARE ASTM A-36 CARBON STEEL U.N.O. BASED ON ASME Y14.36M-1989</p>	<p>ALL FILLET WELDS ARE 5/16" U.N.O.</p>	<p>SIZE B</p>	<p>MATERIAL VARIES</p>	<p>DWG NO UFC.drawing</p>	<p>REV</p>
	<p>SCALE VARIES</p>		<p>SHEET 7 OF 7</p>			