

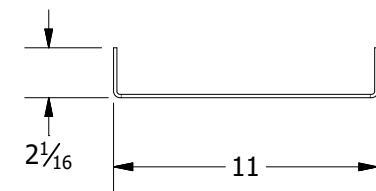
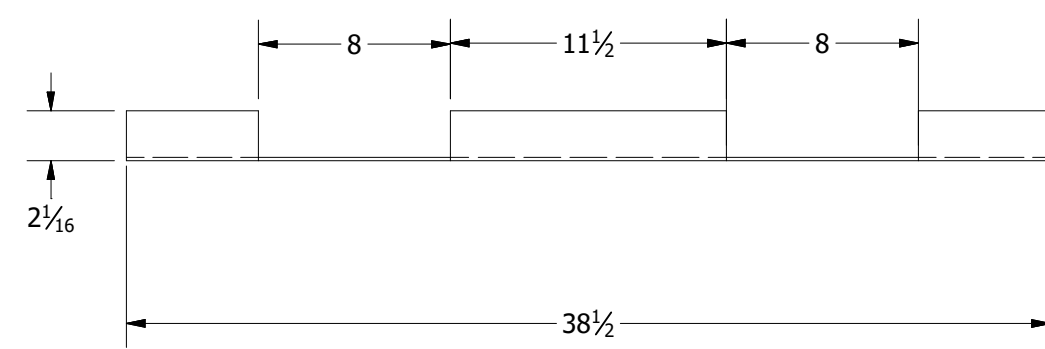
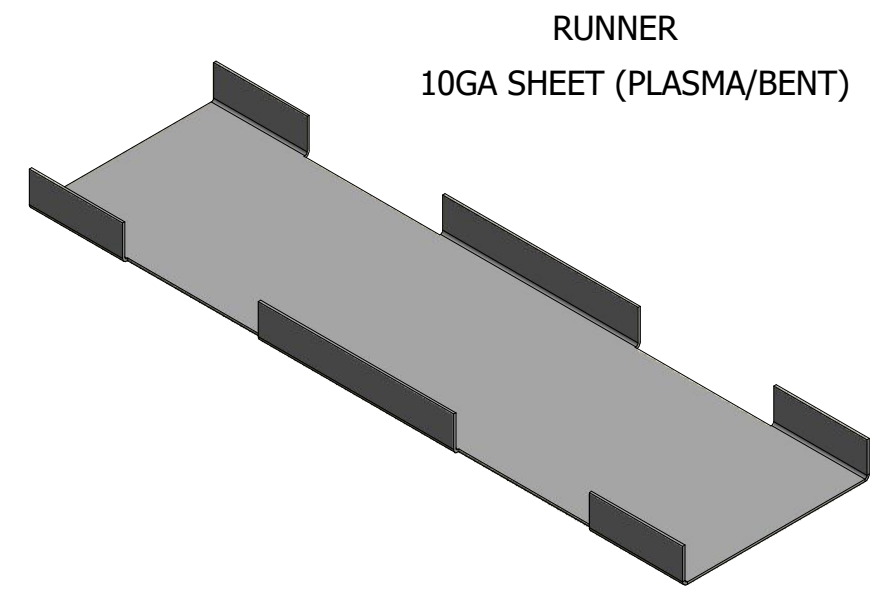
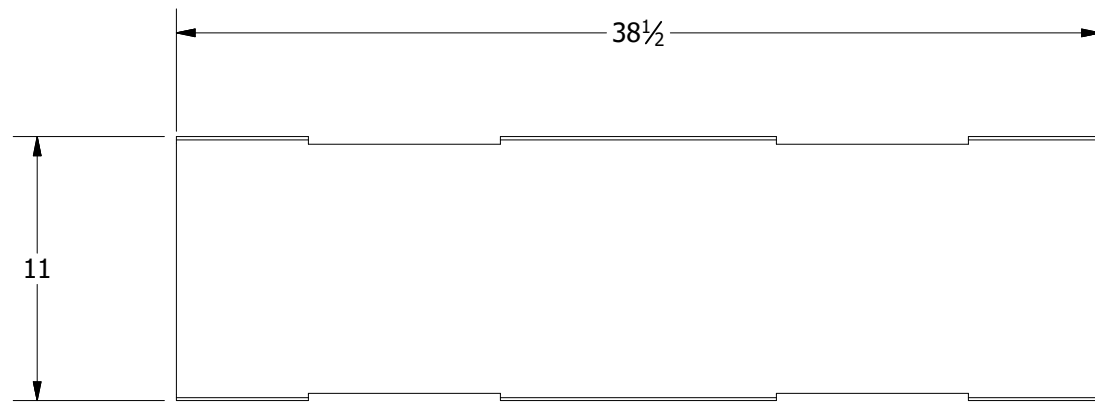
THE MATERIALS AND INFORMATION CONTAINED IN THESE DOCUMENTS ARE THE SOLE PROPERTY OF SAF-T-CART. ANY DESIGN OR PRINCIPLE CONTAINED IN THE PRINTS IS CONSIDERED CONFIDENTIAL. THIS INFORMATION IS SUMMITTED TO YOU WITH AGREEMENT THAT IS IT NOT TO BE REPRODUCED, COPIED OR RELEASED IN PART OR IN WHOLE TO ANY COMPANY OR INDIVIDUAL. BY ACCEPTING THIS DOCUMENT YOU ARE AGREEING TO THE STATEMENTS ABOVE.

DIMENSIONS ARE IN INCHES UNLESS SPECIFIED OTHERWISE DO NOT TAKE DIMENSIONS FROM DRAWING  
 TOLERANCES  
 FRACTIONS ± 1/16"  
 ANGLES ± 0.5°  
 X.XX ± N/A  
 X.XXX ± N/A

DRAWN	Cortney	4/26/2019
CHECKED	REID WALKER/BILLY MONFORT	
QA/CWI	HARVEY STURDIVANT	
MFG	JAMES JACO	
APPROVED	JIMMY WALKER	
ALL STRUCTURAL MEMBERS ARE ASTM A-36 CARBON STEEL U.N.O. BASED ON ASME Y14.36M-1989		
ALL FILLET WELDS ARE 5/16" U.N.O.		



STP-16 IP			
SIZE	MATERIAL	DWG NO	REV
B	VARIES	STP-16 IP	
SCALE	VARIES		SHEET 1 OF 16



THE MATERIALS AND INFORMATION CONTAINED IN THESE DOCUMENTS ARE THE SOLE PROPERTY OF SAF-T-CART. ANY DESIGN OR PRINCIPLE CONTAINED IN THE PRINTS IS CONSIDERED CONFIDENTIAL. THIS INFORMATION IS SUMMITTED TO YOU WITH AGREEMENT THAT IS IT NOT TO BE REPRODUCED, COPIED OR RELEASED IN PART OR IN WHOLE TO ANY COMPANY OR INDIVIDUAL. BY ACCEPTING THIS DOCUMENT YOU ARE AGREEING TO THE STATEMENTS ABOVE.

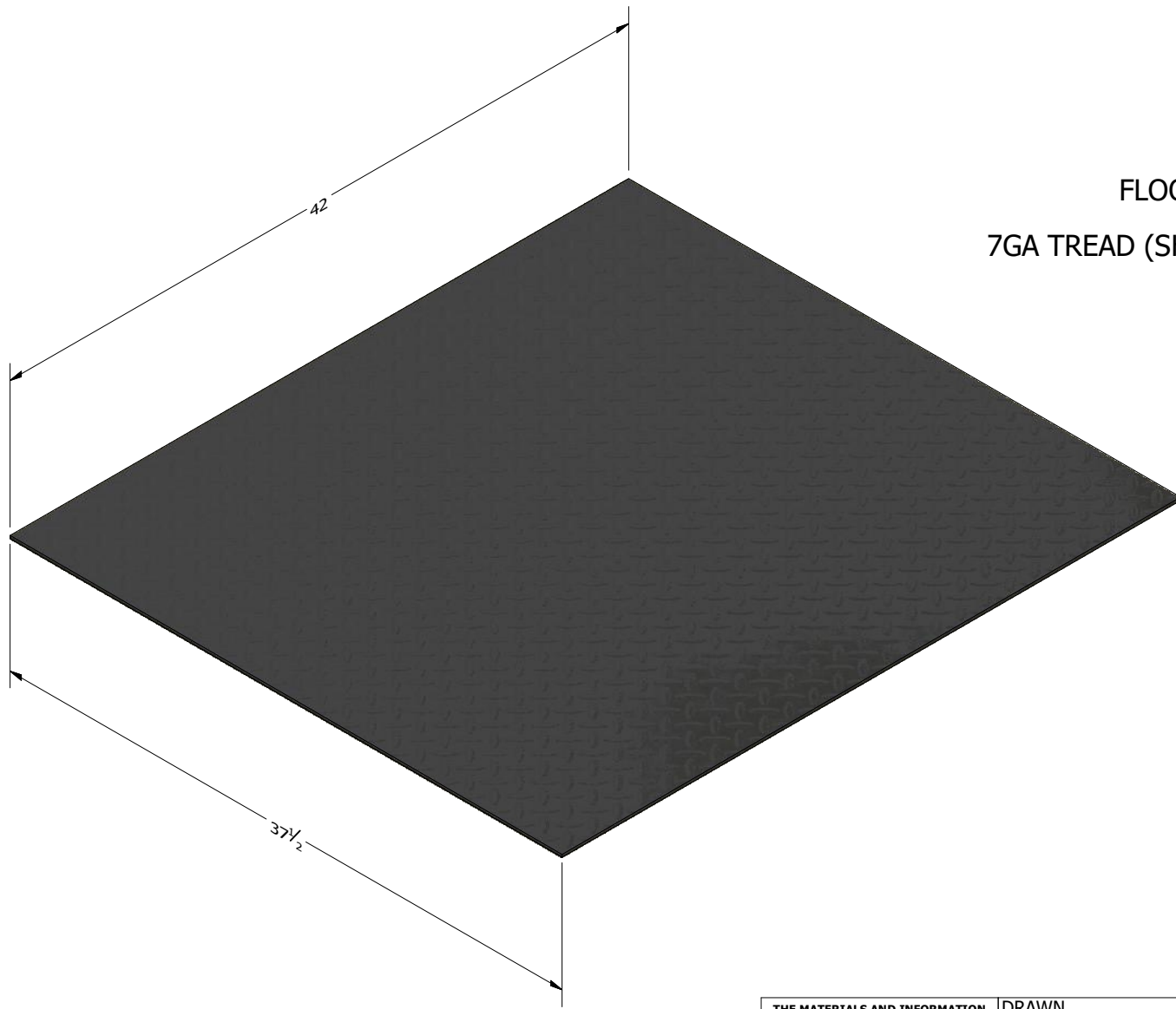
DIMENSIONS ARE IN INCHES UNLESS SPECIFIED OTHERWISE DO NOT TAKE DIMENSIONS FROM DRAWING

TOLERANCES  
 FRACTIONS ± 1/16"  
 ANGLES ± 0.5°  
 X.XX ± N/A  
 X.XXX ± N/A

DRAWN	Cortney	4/26/2019
CHECKED	REID WALKER/BILLY MONFORT	
QA/CWI	HARVEY STURDIVANT	
MFG	JAMES JACO	
APPROVED	JIMMY WALKER	
ALL STRUCTURAL MEMBERS ARE ASTM A-36 CARBON STEEL U.N.O. BASED ON ASME Y14.36M-1989		
ALL FILLET WELDS ARE 5/16" U.N.O.		

CLARKSDALE, MS 38614  
 800-542-2278  
<http://www.saftcart.com/>  
 DETAILED MANUFACTURING PLANS

Z11540000			
SIZE	MATERIAL	DWG NO	REV
B	VARIES	STP-16 IP	
SCALE	VARIES		SHEET 2 OF 16



FLOOR  
7GA TREAD (SHEAR 42" X 37.5")

THE MATERIALS AND INFORMATION CONTAINED IN THESE DOCUMENTS ARE THE SOLE PROPERTY OF SAF-T-CART. ANY DESIGN OR PRINCIPLE CONTAINED IN THE PRINTS IS CONSIDERED CONFIDENTIAL. THIS INFORMATION IS SUMMITTED TO YOU WITH AGREEMENT THAT IS IT NOT TO BE REPRODUCED, COPIED OR RELEASED IN PART OR IN WHOLE TO ANY COMPANY OR INDIVIDUAL. BY ACCEPTING THIS DOCUMENT YOU ARE AGREEING TO THE STATEMENTS ABOVE.

DIMENSIONS ARE IN INCHES UNLESS SPECIFIED OTHERWISE DO NOT TAKE DIMENSIONS FROM DRAWING  
TOLERANCES  
FRACTIONS ± 1/16"  
ANGLES ± 0.5°  
X.XX ± N/A  
X.XXX ± N/A

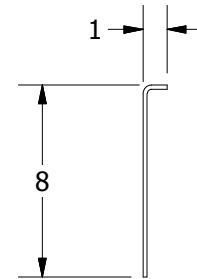
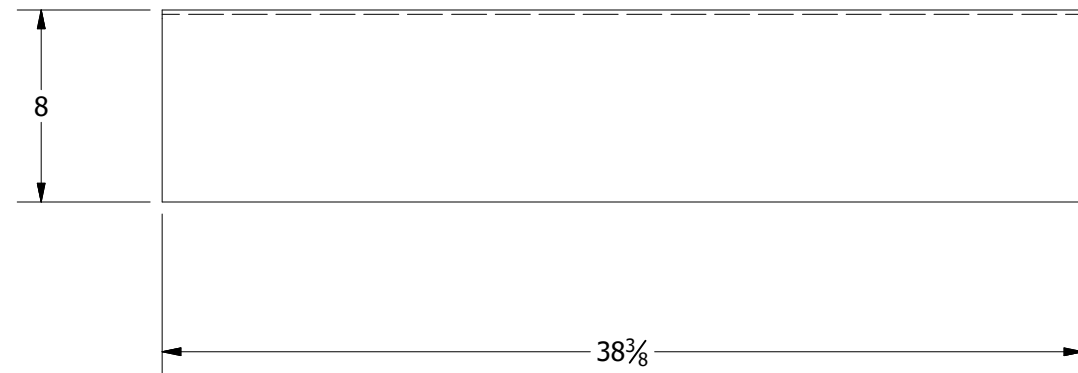
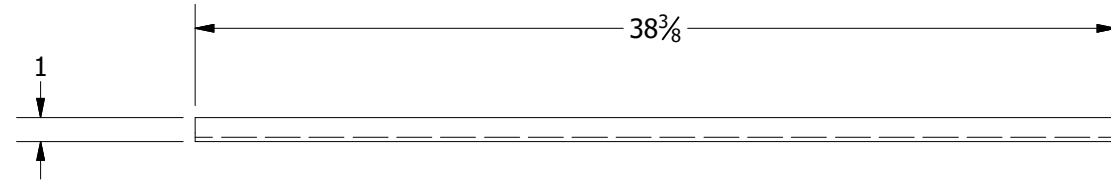
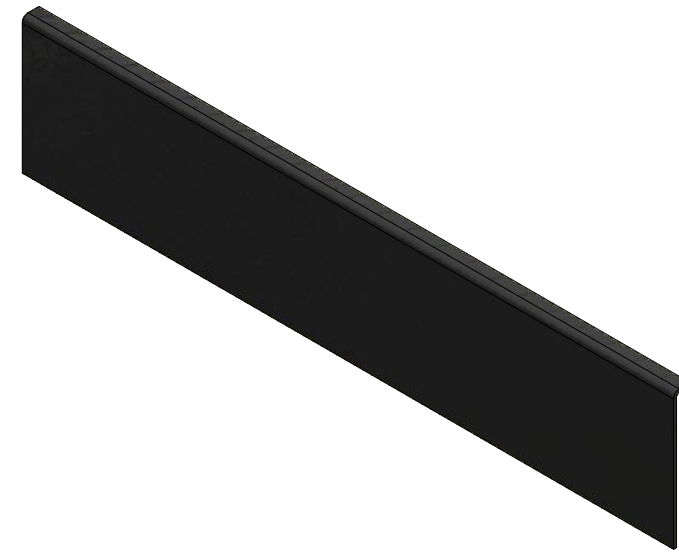
DRAWN	courtney	4/26/2019
CHECKED	REID WALKER/BILLY MONFORT	
QA/CWI	HARVEY STURDIVANT	
MFG	JAMES JACO	
APPROVED	JIMMY WALKER	
ALL STRUCTURAL MEMBERS ARE ASTM A-36 CARBON STEEL U.N.O. BASED ON ASME Y14.36M-1989		
ALL FILLET WELDS ARE 5/16" U.N.O.		

CLARKSDALE, MS 38614  
800-542-2278  
<http://www.saftcart.com/>  
DETAILED MANUFACTURING PLANS

Z21640000

SIZE	MATERIAL	DWG NO	REV
B	VARIES	STP-16 IP	
SCALE	VARIES		SHEET 3 OF 16

REAR KICKPLATE  
7GA TREAD (SHEAR/BENT)



THE MATERIALS AND INFORMATION CONTAINED IN THESE DOCUMENTS ARE THE SOLE PROPERTY OF SAF-T-CART. ANY DESIGN OR PRINCIPLE CONTAINED IN THE PRINTS IS CONSIDERED CONFIDENTIAL. THIS INFORMATION IS SUMMITTED TO YOU WITH AGREEMENT THAT IS IT NOT TO BE REPRODUCED, COPIED OR RELEASED IN PART OR IN WHOLE TO ANY COMPANY OR INDIVIDUAL. BY ACCEPTING THIS DOCUMENT YOU ARE AGREEING TO THE STATEMENTS ABOVE.

DIMENSIONS ARE IN INCHES UNLESS SPECIFIED OTHERWISE DO NOT TAKE DIMENSIONS FROM DRAWING  
TOLERANCES  
FRACTIONS ± 1/16"  
ANGLES ± 0.5°  
X.XX ± N/A  
X.XXX ± N/A

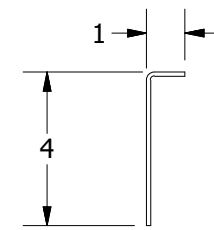
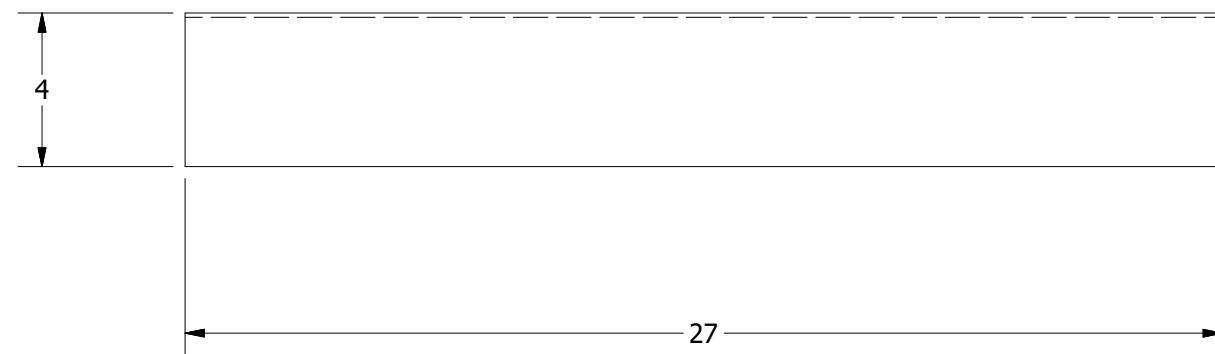
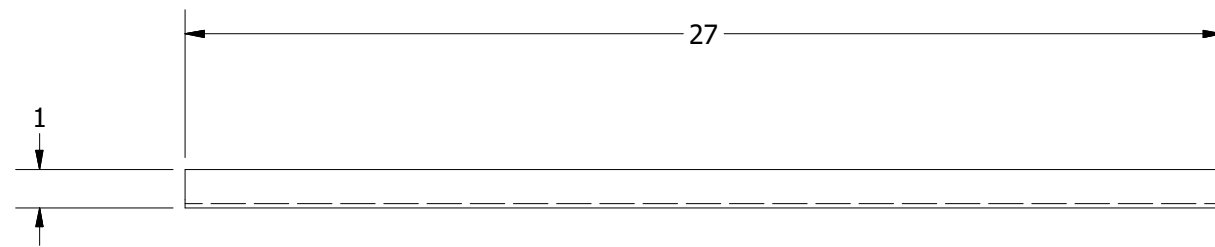
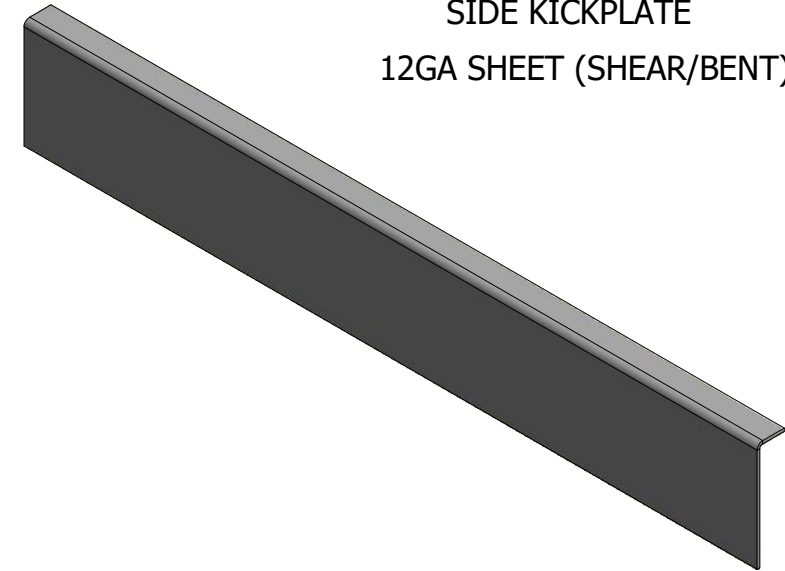
DRAWN Cortney	4/26/2019
CHECKED REID WALKER/BILLY MONFORT	
QA/CWI HARVEY STURDIVANT	
MFG JAMES JACO	
APPROVED JIMMY WALKER	
ALL STRUCTURAL MEMBERS ARE ASTM A-36 CARBON STEEL U.N.O. BASED ON ASME Y14.36M-1989	
ALL FILLET WELDS ARE 5/16" U.N.O.	

CLARKSDALE, MS 38614  
800-542-2278  
<http://www.saftcart.com/>  
DETAILED MANUFACTURING PLANS

Z21640001

SIZE B	MATERIAL VARIES	DWG NO STP-16 IP	REV
SCALE	SHEET 4 OF 16		

SIDE KICKPLATE  
12GA SHEET (SHEAR/BENT)



THE MATERIALS AND INFORMATION CONTAINED IN THESE DOCUMENTS ARE THE SOLE PROPERTY OF SAF-T-CART. ANY DESIGN OR PRINCIPLE CONTAINED IN THE PRINTS IS CONSIDERED CONFIDENTIAL. THIS INFORMATION IS SUMMITTED TO YOU WITH AGREEMENT THAT IS IT NOT TO BE REPRODUCED, COPIED OR RELEASED IN PART OR IN WHOLE TO ANY COMPANY OR INDIVIDUAL. BY ACCEPTING THIS DOCUMENT YOU ARE AGREEING TO THE STATEMENTS ABOVE.

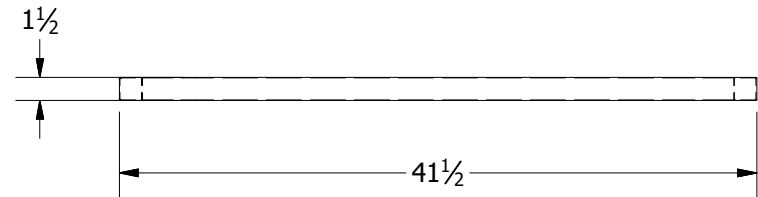
DIMENSIONS ARE IN INCHES UNLESS SPECIFIED OTHERWISE DO NOT TAKE DIMENSIONS FROM DRAWING

TOLERANCES  
FRACTIONS ± 1/16"  
ANGLES ± 0.5°  
X.XX ± N/A  
X.XXX ± N/A

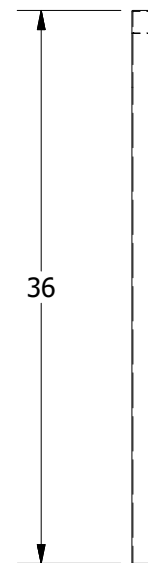
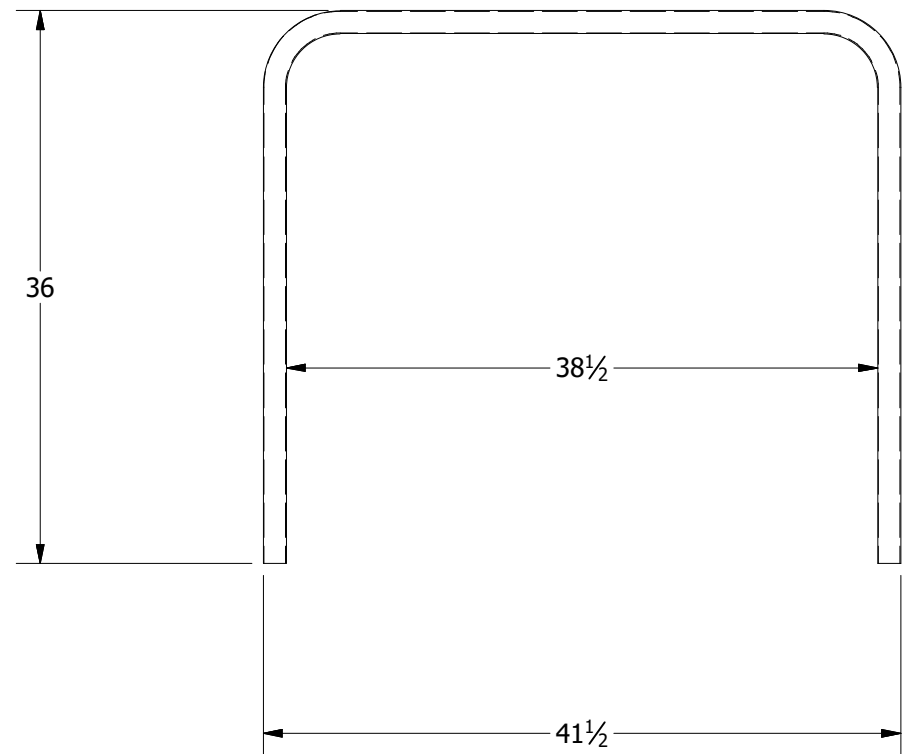
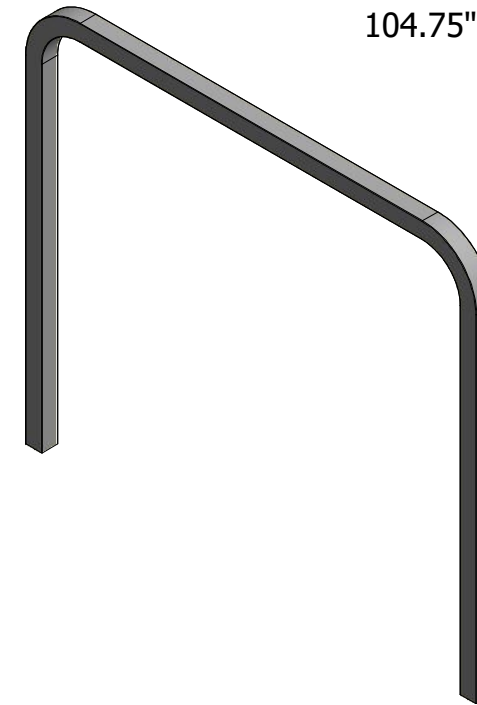
DRAWN	Cortney	4/26/2019
CHECKED	REID WALKER/BILLY MONFORT	
QA/CWI	HARVEY STURDIVANT	
MFG	JAMES JACO	
APPROVED	JIMMY WALKER	
ALL STRUCTURAL MEMBERS ARE ASTM A-36 CARBON STEEL U.N.O. BASED ON ASME Y14.36M-1989		
ALL FILLET WELDS ARE 5/16" U.N.O.		

CLARKSDALE, MS 38614  
800-542-2278  
<http://www.saftcart.com/>  
DETAILED MANUFACTURING PLANS

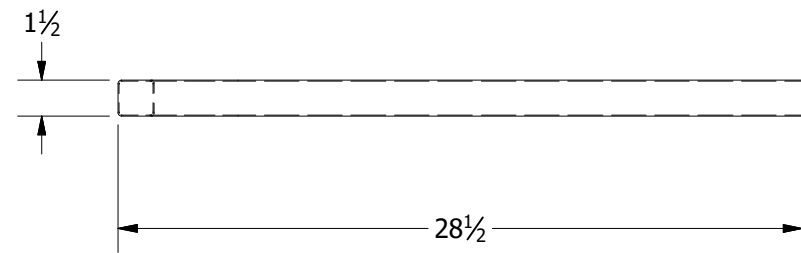
Z11340000			
SIZE	MATERIAL	DWG NO	REV
B	VARIES	STP-16 IP	
SCALE	VARIES		SHEET 5 OF 16



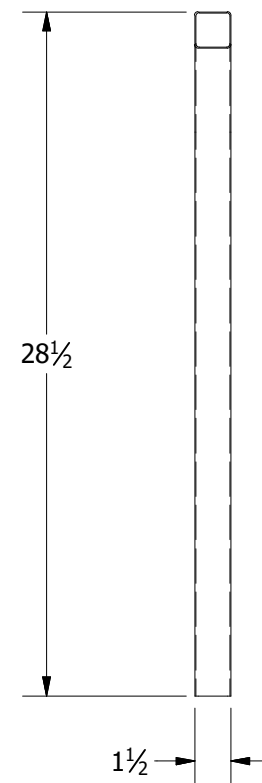
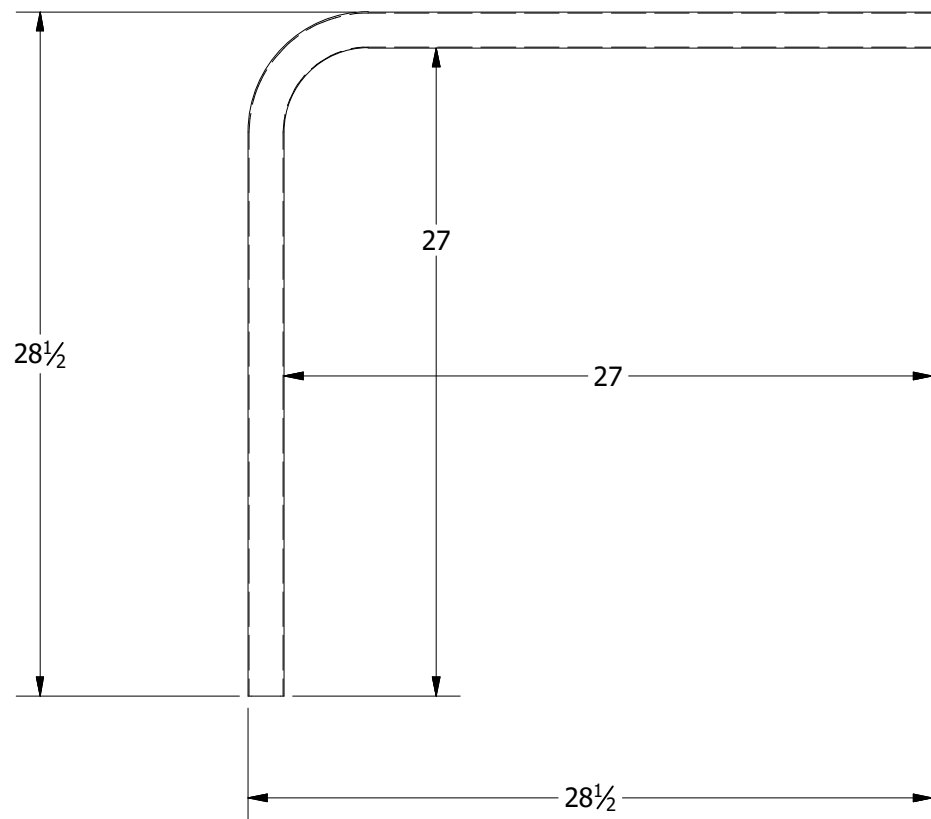
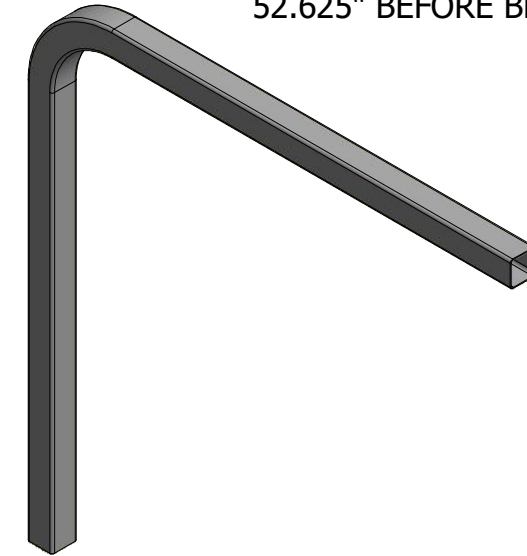
BACK  
 14GA 1.5"X1.5" SQ TUBE (SAW/BENT)  
 104.75" BEFORE BEND



<p>THE MATERIALS AND INFORMATION CONTAINED IN THESE DOCUMENTS ARE THE SOLE PROPERTY OF SAF-T-CART. ANY DESIGN OR PRINCIPLE CONTAINED IN THE PRINTS IS CONSIDERED CONFIDENTIAL. THIS INFORMATION IS SUMMITTED TO YOU WITH AGREEMENT THAT IS IT NOT TO BE REPRODUCED, COPIED OR RELEASED IN PART OR IN WHOLE TO ANY COMPANY OR INDIVIDUAL. BY ACCEPTING THIS DOCUMENT YOU ARE AGREEING TO THE STATEMENTS ABOVE.</p> <p>DIMENSIONS ARE IN INCHES UNLESS SPECIFIED OTHERWISE DO NOT TAKE DIMENSIONS FROM DRAWING</p> <p>TOLERANCES          FRACTIONS ± 1/16"          ANGLES ± 0.5°          X.XX ± N/A          X.XXX ± N/A</p>	<p>DRAWN          Cortney 4/26/2019</p>	<p><b>SAFTCART<sup>T.M.</sup></b>          CLARKSDALE, MS 38614          800-542-2278  <a href="http://www.saftcart.com/">http://www.saftcart.com/</a>          DETAILED MANUFACTURING PLANS</p>		
	<p>CHECKED          REID WALKER/BILLY MONFORT</p>			
	<p>QA/CWI          HARVEY STURDIVANT</p>			
	<p>MFG          JAMES JACO</p>			
<p>APPROVED          JIMMY WALKER</p>	<p>ALL STRUCTURAL MEMBERS ARE ASTM A-36 CARBON STEEL U.N.O. BASED ON ASME Y14.36M-1989</p>	<p>Z41240000</p>		
<p>ALL FILLET WELDS ARE 5/16" U.N.O.</p>	<p>SIZE B</p>	<p>MATERIAL VARIES</p>	<p>DWG NO STP-16 IP</p>	<p>REV</p>
	<p>SCALE VARIES</p>		<p>SHEET 6 OF 16</p>	



ARM  
 14GA 1.5"X1.5" SQ TUBE (SAW/BENT)  
 52.625" BEFORE BEND



<p>THE MATERIALS AND INFORMATION CONTAINED IN THESE DOCUMENTS ARE THE SOLE PROPERTY OF SAF-T-CART. ANY DESIGN OR PRINCIPLE CONTAINED IN THE PRINTS IS CONSIDERED CONFIDENTIAL. THIS INFORMATION IS SUMMITTED TO YOU WITH AGREEMENT THAT IS IT NOT TO BE REPRODUCED, COPIED OR RELEASED IN PART OR IN WHOLE TO ANY COMPANY OR INDIVIDUAL. BY ACCEPTING THIS DOCUMENT YOU ARE AGREEING TO THE STATEMENTS ABOVE.</p> <p>DIMENSIONS ARE IN INCHES UNLESS SPECIFIED OTHERWISE DO NOT TAKE DIMENSIONS FROM DRAWING</p> <p>TOLERANCES          FRACTIONS ± 1/16"          ANGLES ± 0.5°          X.XX ± N/A          X.XXX ± N/A</p>	DRAWN	Cortney	4/26/2019
	CHECKED	REID WALKER/BILLY MONFORT	
	QA/CWI	HARVEY STURDIVANT	
	MFG	JAMES JACO	
	APPROVED	JIMMY WALKER	
	ALL STRUCTURAL MEMBERS ARE ASTM A-36 CARBON STEEL U.N.O. BASED ON ASME Y14.36M-1989		
	ALL FILLET WELDS ARE 5/16" U.N.O.		

CLARKSDALE, MS 38614  
 800-542-2278  
<http://www.saftcart.com/>  
 DETAILED MANUFACTURING PLANS

Z41240001			
SIZE	MATERIAL	DWG NO	REV
B	VARIES	STP-16 IP	
SCALE	VARIES		SHEET 7 OF 16

4

3

2

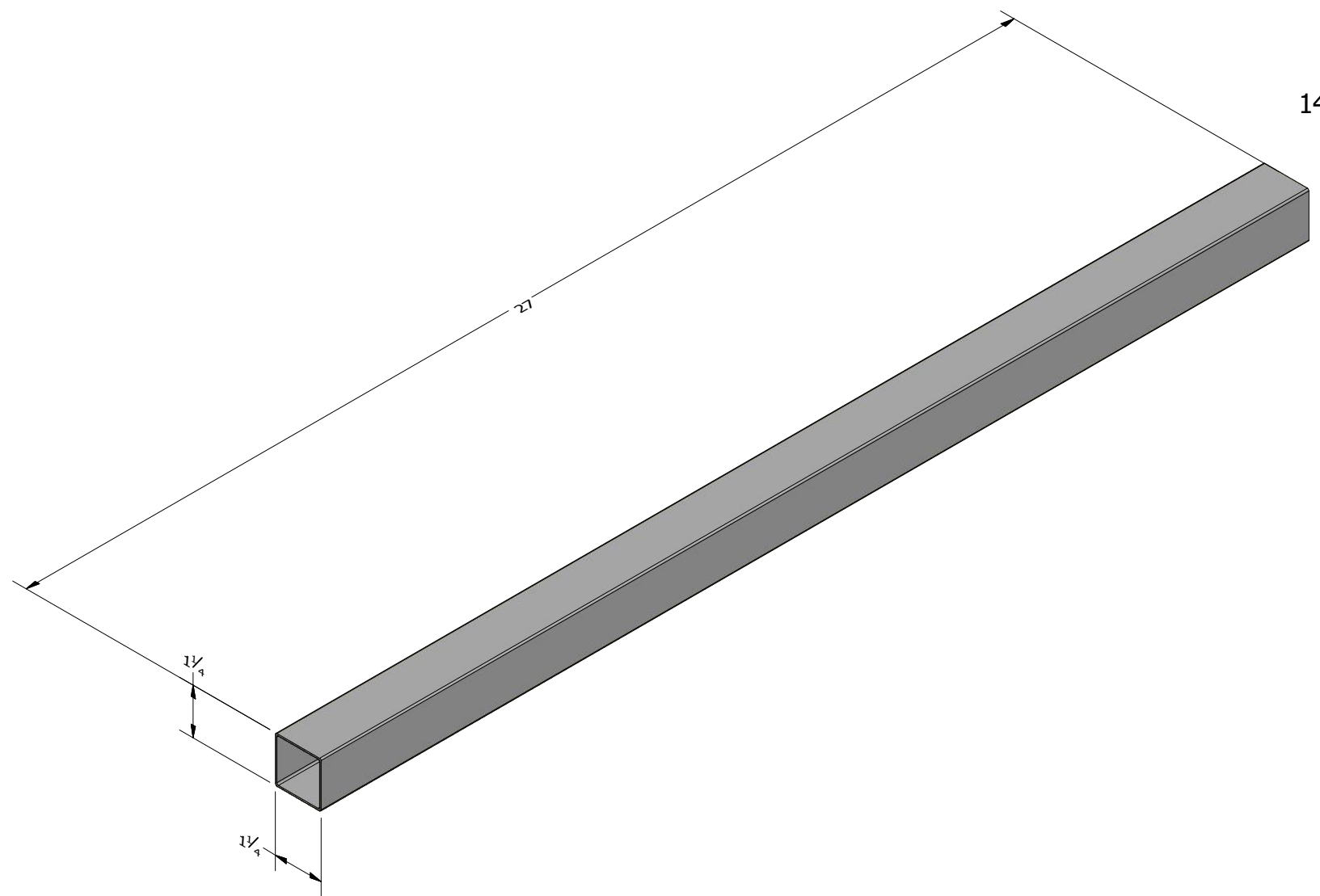
1

B


B

A

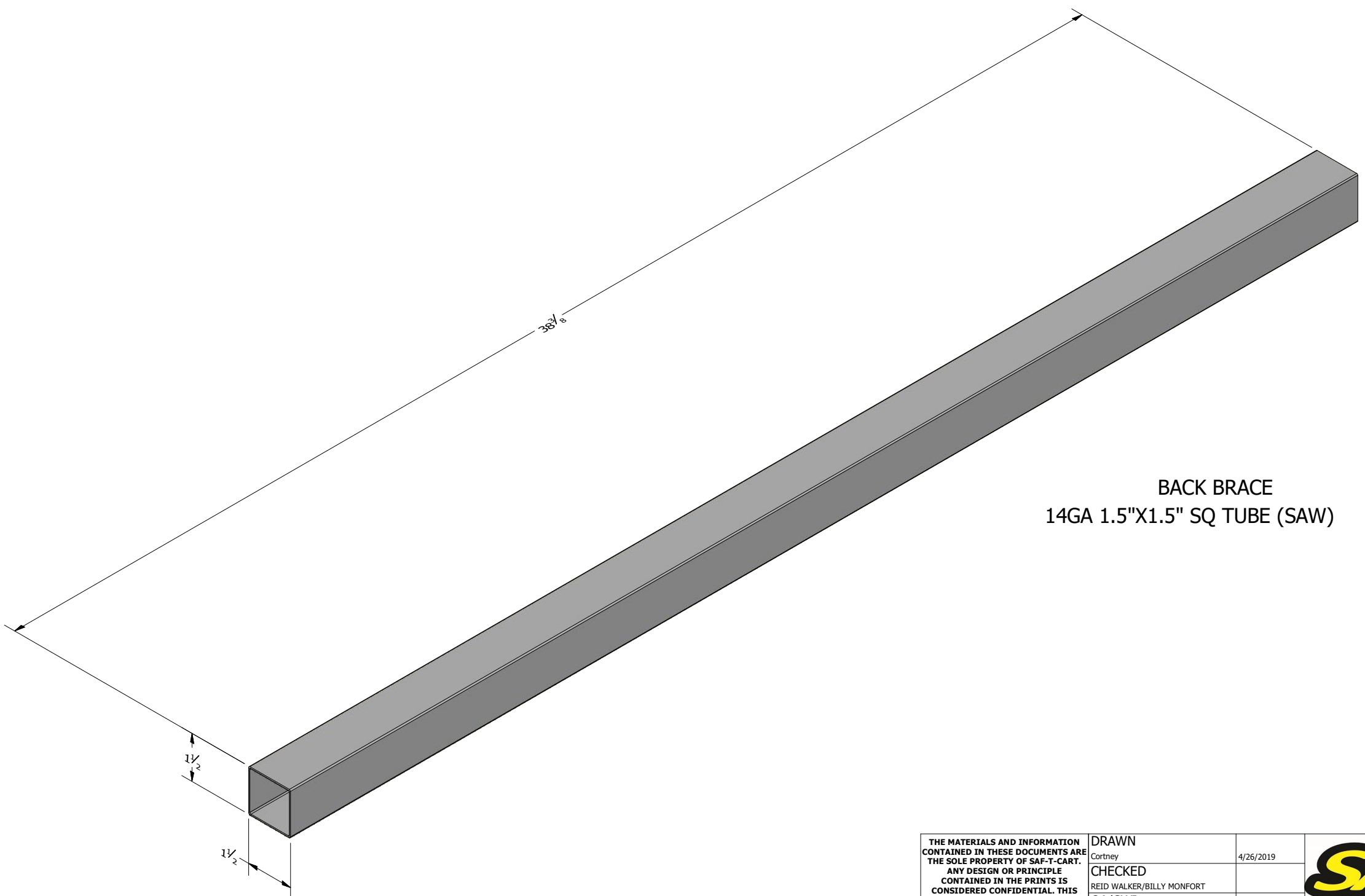
A



ARM BRACE  
 14GA 1.25"X1.25" SQ TUBE (SAW)

<p>THE MATERIALS AND INFORMATION CONTAINED IN THESE DOCUMENTS ARE THE SOLE PROPERTY OF SAF-T-CART. ANY DESIGN OR PRINCIPLE CONTAINED IN THE PRINTS IS CONSIDERED CONFIDENTIAL. THIS INFORMATION IS SUMMITTED TO YOU WITH AGREEMENT THAT IS IT NOT TO BE REPRODUCED, COPIED OR RELEASED IN PART OR IN WHOLE TO ANY COMPANY OR INDIVIDUAL. BY ACCEPTING THIS DOCUMENT YOU ARE AGREEING TO THE STATEMENTS ABOVE.</p> <p>DIMENSIONS ARE IN INCHES UNLESS SPECIFIED OTHERWISE DO NOT TAKE DIMENSIONS FROM DRAWING</p> <p>TOLERANCES          FRACTIONS ± 1/16"          ANGLES ± 0.5°          X.XX ± N/A          X.XXX ± N/A</p>	<p>DRAWN          Cortney          4/26/2019</p>	 <p>CLARKSDALE, MS 38614          800-542-2278  <a href="http://www.saftcart.com/">http://www.saftcart.com/</a>          DETAILED MANUFACTURING PLANS</p>				
	<p>CHECKED          REID WALKER/BILLY MONFORT          QA/CWI          HARVEY STURDIVANT          MFG          JAMES JACO          APPROVED</p>				<p>Z41240002</p>	
	<p>JIMMY WALKER          ALL STRUCTURAL MEMBERS ARE ASTM A-36 CARBON STEEL U.N.O. BASED ON ASME Y14.36M-1989</p>	<p>SCALE</p>	<p>SIZE          B</p>	<p>MATERIAL          VARIES</p>	<p>DWG NO          STP-16 IP</p>	<p>REV</p>
	<p>ALL FILLET WELDS ARE 5/16" U.N.O.</p>	<p>SCALE          VARIES</p>	<p>SHEET 8 OF 16</p>			





BACK BRACE  
14GA 1.5"X1.5" SQ TUBE (SAW)

THE MATERIALS AND INFORMATION CONTAINED IN THESE DOCUMENTS ARE THE SOLE PROPERTY OF SAF-T-CART. ANY DESIGN OR PRINCIPLE CONTAINED IN THE PRINTS IS CONSIDERED CONFIDENTIAL. THIS INFORMATION IS SUMMITTED TO YOU WITH AGREEMENT THAT IS IT NOT TO BE REPRODUCED, COPIED OR RELEASED IN PART OR IN WHOLE TO ANY COMPANY OR INDIVIDUAL. BY ACCEPTING THIS DOCUMENT YOU ARE AGREEING TO THE STATEMENTS ABOVE.

DIMENSIONS ARE IN INCHES UNLESS SPECIFIED OTHERWISE DO NOT TAKE DIMENSIONS FROM DRAWING

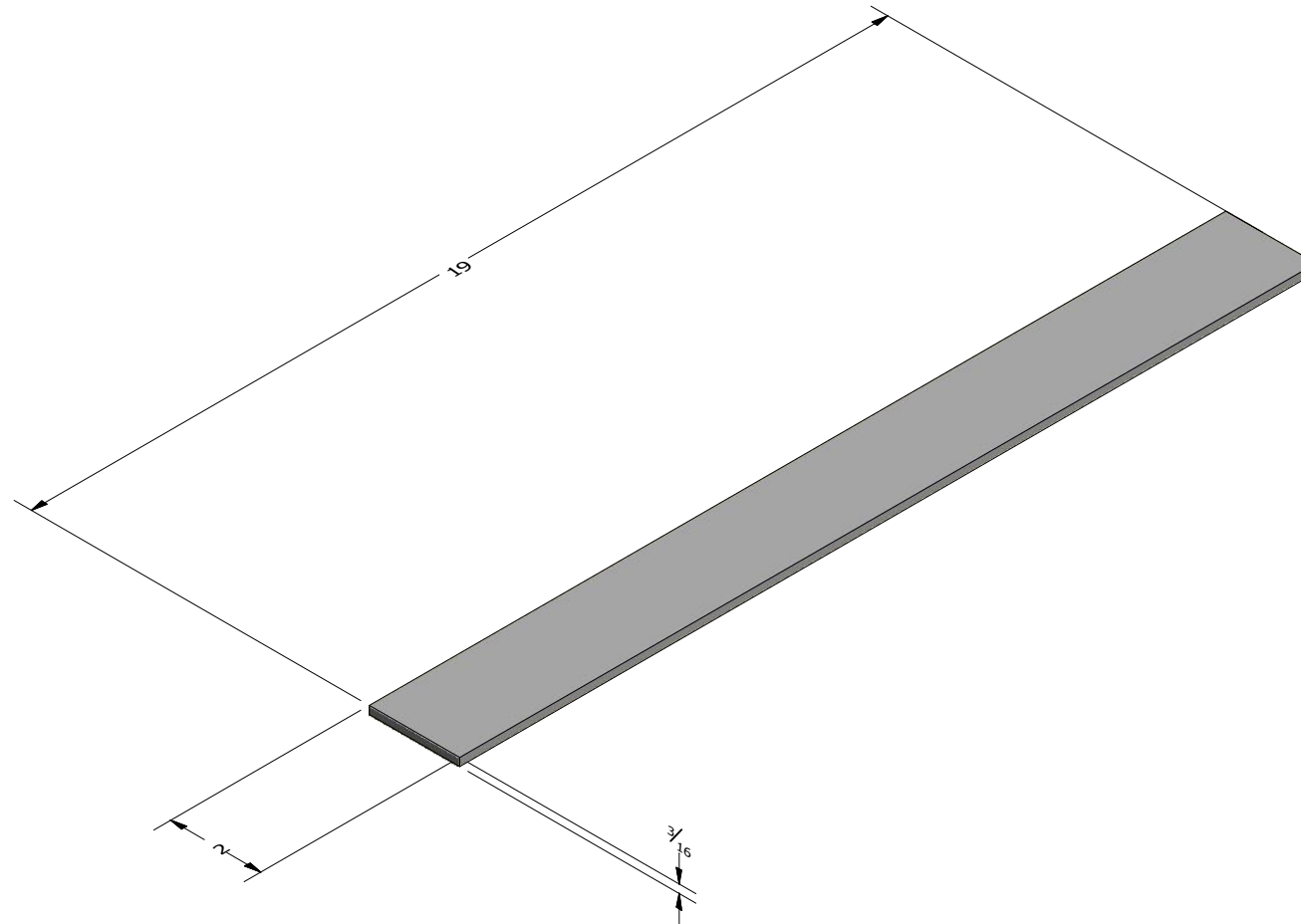
TOLERANCES  
FRACTIONS ± 1/16"  
ANGLES ± 0.5°  
X.XX ± N/A  
X.XXX ± N/A

DRAWN	Cortney	4/26/2019
CHECKED	REID WALKER/BILLY MONFORT	
QA/CWI	HARVEY STURDIVANT	
MFG	JAMES JACO	
APPROVED	JIMMY WALKER	
ALL STRUCTURAL MEMBERS ARE ASTM A-36 CARBON STEEL U.N.O. BASED ON ASME Y14.36M-1989		
ALL FILLET WELDS ARE 5/16" U.N.O.		

CLARKSDALE, MS 38614  
800-542-2278  
<http://www.saftcart.com/>  
DETAILED MANUFACTURING PLANS

Z41240003

SIZE	MATERIAL	DWG NO	REV
B	VARIES	STP-16 IP	
SCALE	VARIES		SHEET 9 OF 16



RUNNER SPACER  
3/16" X 2" FLAT (SAW/IRON WORKER)

THE MATERIALS AND INFORMATION CONTAINED IN THESE DOCUMENTS ARE THE SOLE PROPERTY OF SAF-T-CART. ANY DESIGN OR PRINCIPLE CONTAINED IN THE PRINTS IS CONSIDERED CONFIDENTIAL. THIS INFORMATION IS SUMMITTED TO YOU WITH AGREEMENT THAT IS IT NOT TO BE REPRODUCED, COPIED OR RELEASED IN PART OR IN WHOLE TO ANY COMPANY OR INDIVIDUAL. BY ACCEPTING THIS DOCUMENT YOU ARE AGREEING TO THE STATEMENTS ABOVE.

DIMENSIONS ARE IN INCHES UNLESS SPECIFIED OTHERWISE DO NOT TAKE DIMENSIONS FROM DRAWING

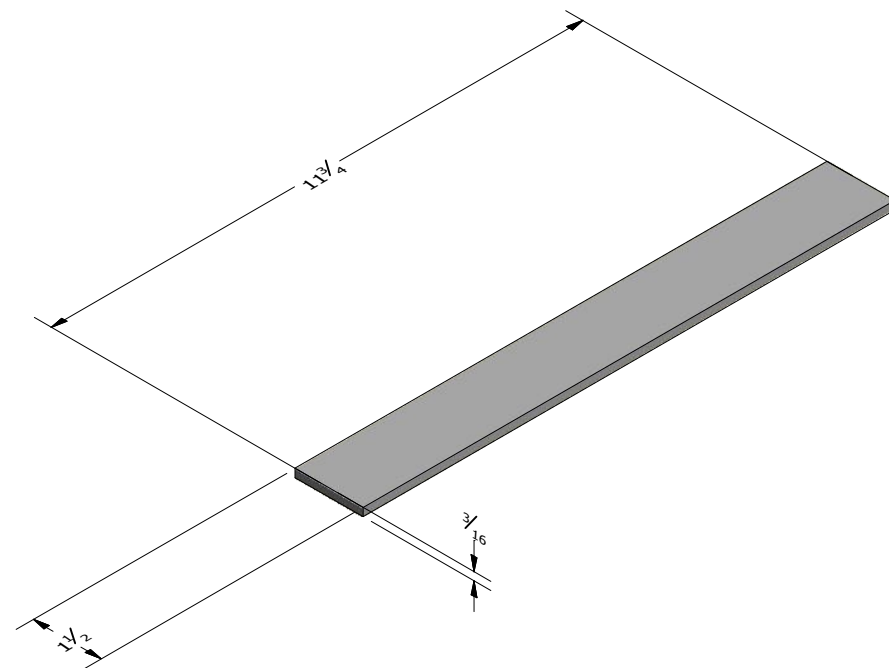
TOLERANCES  
FRACTIONS ± 1/16"  
ANGLES ± 0.5°  
X.XX ± N/A  
X.XXX ± N/A

DRAWN	Cortney	4/26/2019
CHECKED	REID WALKER/BILLY MONFORT	
QA/CWI	HARVEY STURDIVANT	
MFG	JAMES JACO	
APPROVED	JIMMY WALKER	
ALL STRUCTURAL MEMBERS ARE ASTM A-36 CARBON STEEL U.N.O. BASED ON ASME Y14.36M-1989		
ALL FILLET WELDS ARE 5/16" U.N.O.		

CLARKSDALE, MS 38614  
800-542-2278  
<http://www.saftcart.com/>  
DETAILED MANUFACTURING PLANS

Z61640000

SIZE	MATERIAL	DWG NO	REV
B	VARIES	STP-16 IP	
SCALE	VARIES		SHEET 10 OF 16



FLOOR REAR/TRAP SIDES  
 3/16" X 1.5" FLAT (SAW/IRON WORKER)

THE MATERIALS AND INFORMATION CONTAINED IN THESE DOCUMENTS ARE THE SOLE PROPERTY OF SAF-T-CART. ANY DESIGN OR PRINCIPLE CONTAINED IN THE PRINTS IS CONSIDERED CONFIDENTIAL. THIS INFORMATION IS SUMMITTED TO YOU WITH AGREEMENT THAT IS IT NOT TO BE REPRODUCED, COPIED OR RELEASED IN PART OR IN WHOLE TO ANY COMPANY OR INDIVIDUAL. BY ACCEPTING THIS DOCUMENT YOU ARE AGREEING TO THE STATEMENTS ABOVE.

DIMENSIONS ARE IN INCHES UNLESS SPECIFIED OTHERWISE DO NOT TAKE DIMENSIONS FROM DRAWING

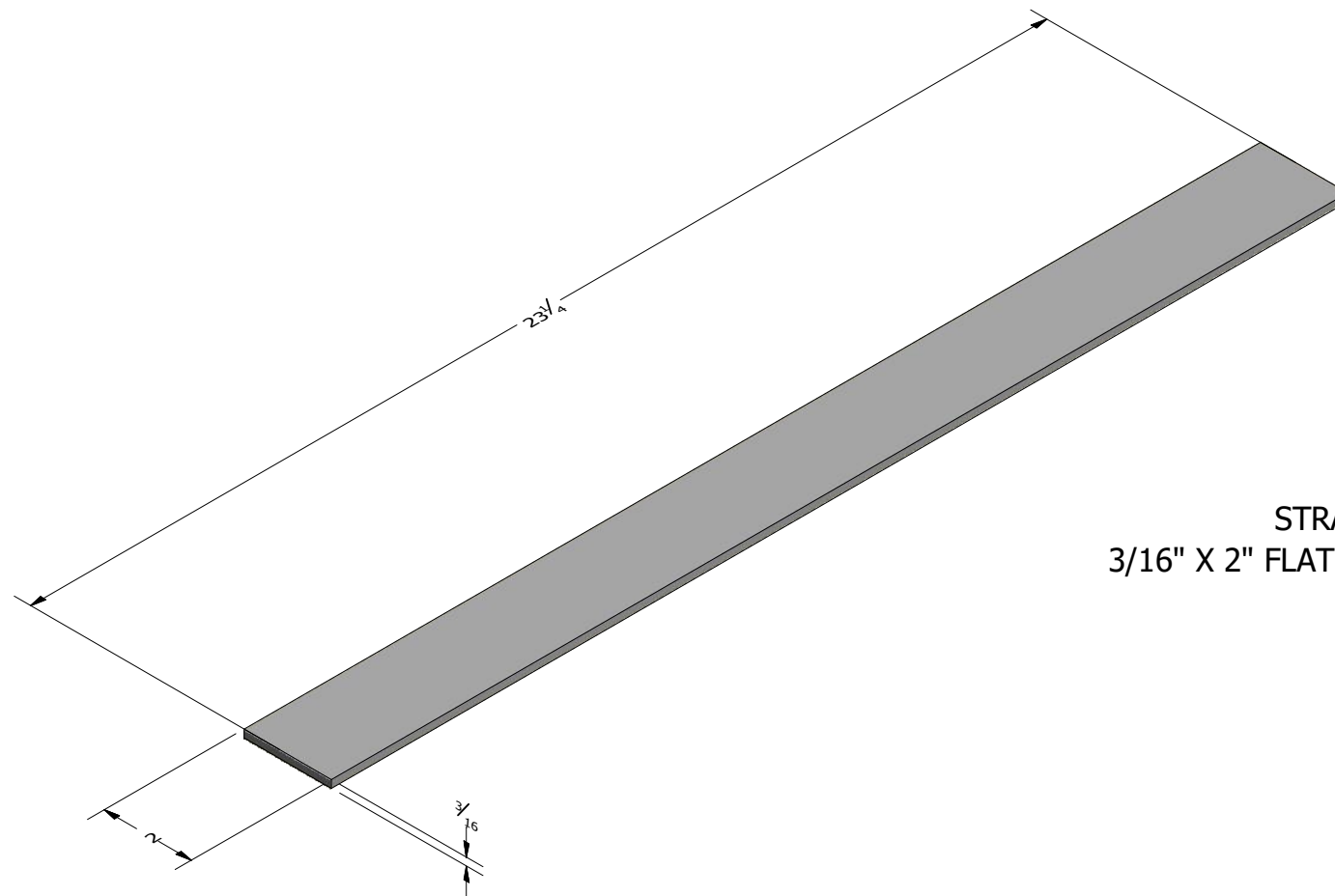
TOLERANCES  
 FRACTIONS ± 1/16"  
 ANGLES ± 0.5°  
 X.XX ± N/A  
 X.XXX ± N/A

DRAWN	Cortney	4/26/2019
CHECKED	REID WALKER/BILLY MONFORT	
QA/CWI	HARVEY STURDIVANT	
MFG	JAMES JACO	
APPROVED	JIMMY WALKER	
ALL STRUCTURAL MEMBERS ARE ASTM A-36 CARBON STEEL U.N.O. BASED ON ASME Y14.36M-1989		
ALL FILLET WELDS ARE 5/16" U.N.O.		


CLARKSDALE, MS 38614  
 800-542-2278  
<http://www.saftcart.com/>  
 DETAILED MANUFACTURING PLANS

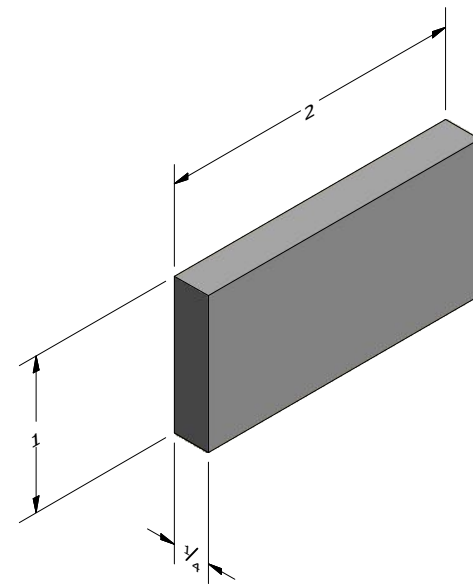
Z61640001

SIZE	MATERIAL	DWG NO	REV
B	VARIES	STP-16 IP	
SCALE	VARIES		SHEET 11 OF 16



STRAP BRACKET  
3/16" X 2" FLAT (SAW/IRON WORKER)

<p>THE MATERIALS AND INFORMATION CONTAINED IN THESE DOCUMENTS ARE THE SOLE PROPERTY OF SAF-T-CART. ANY DESIGN OR PRINCIPLE CONTAINED IN THE PRINTS IS CONSIDERED CONFIDENTIAL. THIS INFORMATION IS SUMMITTED TO YOU WITH AGREEMENT THAT IS IT NOT TO BE REPRODUCED, COPIED OR RELEASED IN PART OR IN WHOLE TO ANY COMPANY OR INDIVIDUAL. BY ACCEPTING THIS DOCUMENT YOU ARE AGREEING TO THE STATEMENTS ABOVE.</p> <p>DIMENSIONS ARE IN INCHES UNLESS SPECIFIED OTHERWISE DO NOT TAKE DIMENSIONS FROM DRAWING</p> <p>TOLERANCES FRACTIONS ± 1/16" ANGLES ± 0.5° X.XX ± N/A X.XXX ± N/A</p>	<p>DRAWN Cortney 4/26/2019</p>	 <p>CLARKSDALE, MS 38614 800-542-2278 <a href="http://www.saftcart.com/">http://www.saftcart.com/</a> DETAILED MANUFACTURING PLANS</p>			
	<p>CHECKED REID WALKER/BILLY MONFORT QA/CWI HARVEY STURDIVANT MFG JAMES JACO APPROVED</p>				<p>Z61640002</p>
	<p>JIMMY WALKER ALL STRUCTURAL MEMBERS ARE ASTM A-36 CARBON STEEL U.N.O. BASED ON ASME Y14.36M-1989 ALL FILLET WELDS ARE 5/16" U.N.O.</p>	<p>SIZE B</p>	<p>MATERIAL VARIES</p>	<p>DWG NO STP-16 IP</p>	<p>REV</p>
		<p>SCALE VARIES</p>	<p>SHEET 12 OF 16</p>		



STRAP BRACKET BRACE  
1/4" X 1" FLAT (SAW/IRON WORKER)

THE MATERIALS AND INFORMATION CONTAINED IN THESE DOCUMENTS ARE THE SOLE PROPERTY OF SAF-T-CART. ANY DESIGN OR PRINCIPLE CONTAINED IN THE PRINTS IS CONSIDERED CONFIDENTIAL. THIS INFORMATION IS SUMMITTED TO YOU WITH AGREEMENT THAT IS IT NOT TO BE REPRODUCED, COPIED OR RELEASED IN PART OR IN WHOLE TO ANY COMPANY OR INDIVIDUAL. BY ACCEPTING THIS DOCUMENT YOU ARE AGREEING TO THE STATEMENTS ABOVE.

DIMENSIONS ARE IN INCHES UNLESS SPECIFIED OTHERWISE DO NOT TAKE DIMENSIONS FROM DRAWING

TOLERANCES  
FRACTIONS ± 1/16"  
ANGLES ± 0.5°  
X.XX ± N/A  
X.XXX ± N/A

**DRAWN**  
Cortney 4/26/2019

**CHECKED**  
REID WALKER/BILLY MONFORT

**QA/CWI**  
HARVEY STURDIVANT

**MFG**  
JAMES JACO

**APPROVED**  
JIMMY WALKER

ALL STRUCTURAL MEMBERS ARE ASTM A-36 CARBON STEEL U.N.O. BASED ON ASME Y14.36M-1989

ALL FILLET WELDS ARE 5/16" U.N.O.



Z61740002

SIZE	MATERIAL	DWG NO	REV
B	VARIES	STP-16 IP	
SCALE	VARIES	SHEET 13 OF 16	

4

3

2

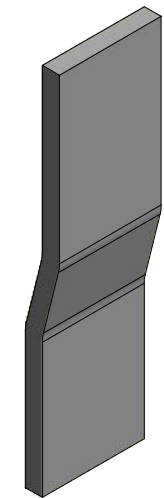
1

B

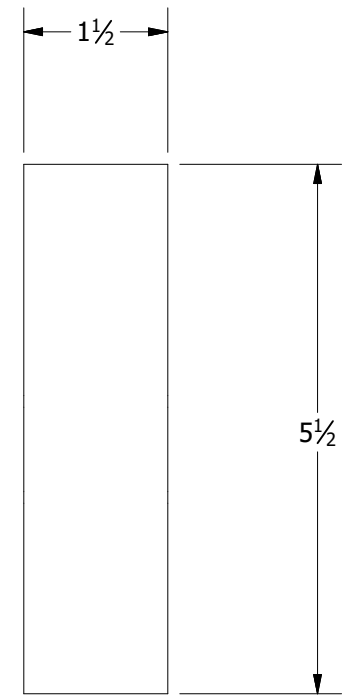
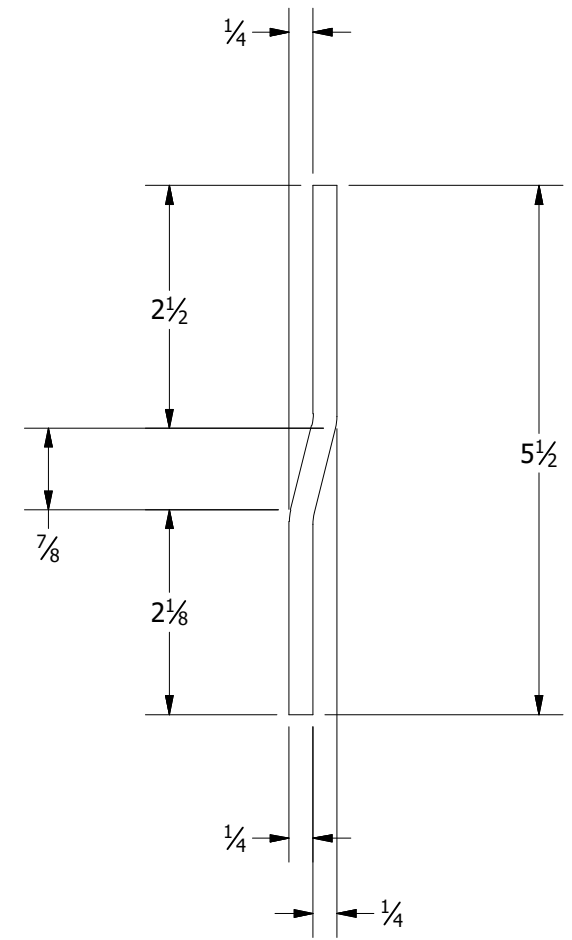
B

A

A



**RUNNER BRACE**  
 1/4" X 1-1/2" FLAT (SAW/BENT)



THE MATERIALS AND INFORMATION CONTAINED IN THESE DOCUMENTS ARE THE SOLE PROPERTY OF SAF-T-CART. ANY DESIGN OR PRINCIPLE CONTAINED IN THE PRINTS IS CONSIDERED CONFIDENTIAL. THIS INFORMATION IS SUMMITTED TO YOU WITH AGREEMENT THAT IS IT NOT TO BE REPRODUCED, COPIED OR RELEASED IN PART OR IN WHOLE TO ANY COMPANY OR INDIVIDUAL. BY ACCEPTING THIS DOCUMENT YOU ARE AGREEING TO THE STATEMENTS ABOVE.

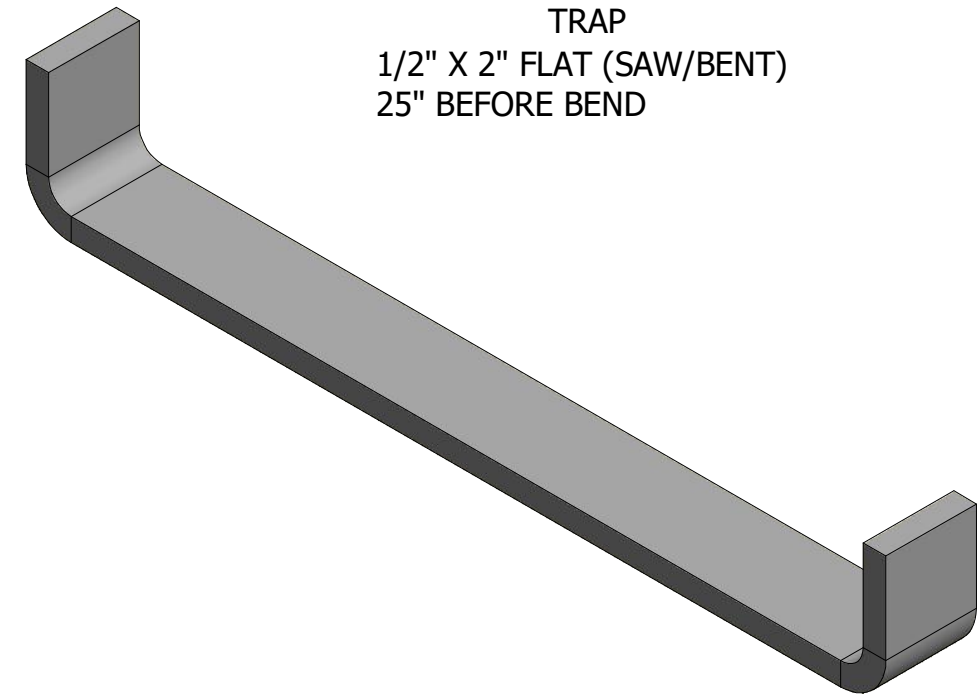
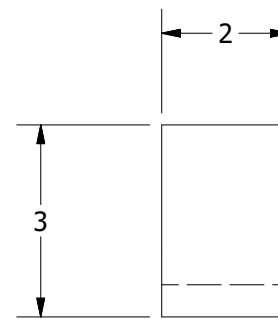
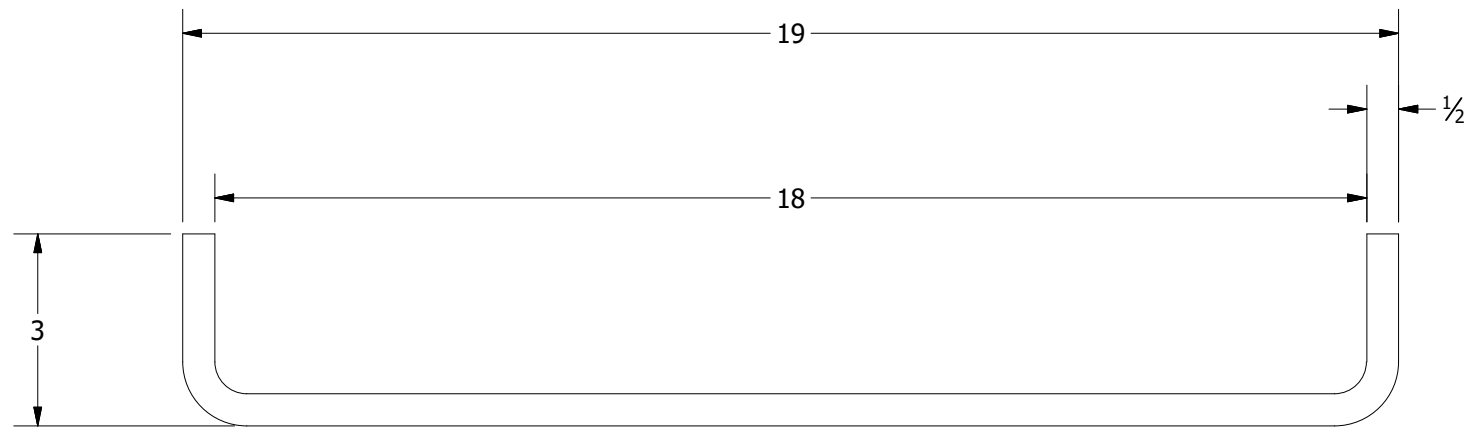
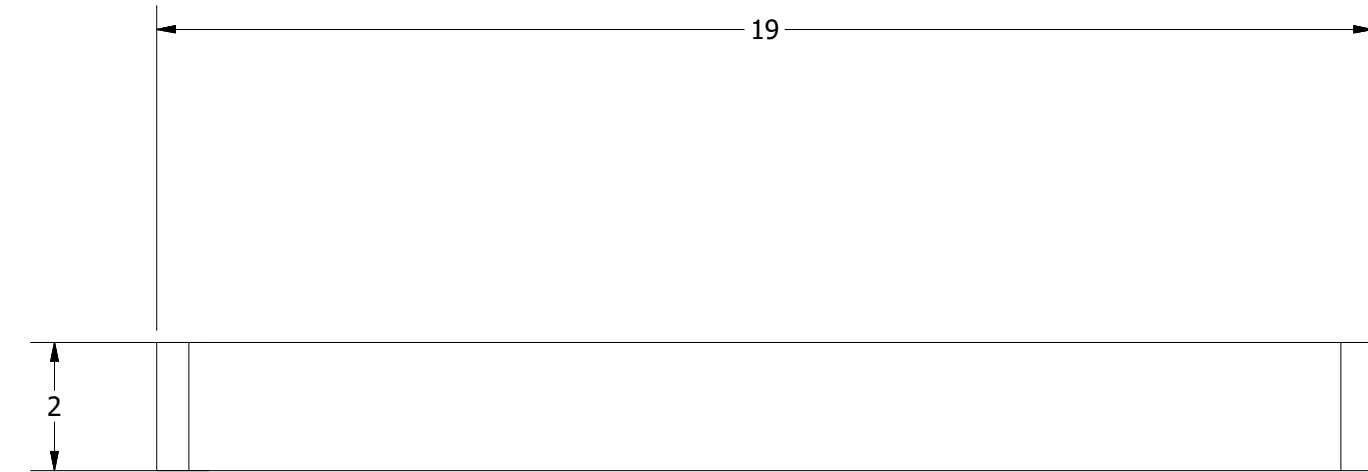
DIMENSIONS ARE IN INCHES UNLESS SPECIFIED OTHERWISE DO NOT TAKE DIMENSIONS FROM DRAWING

TOLERANCES  
 FRACTIONS ± 1/16"  
 ANGLES ± 0.5°  
 X.XX ± N/A  
 X.XXX ± N/A

<b>DRAWN</b> Cortney	4/26/2019
<b>CHECKED</b> REID WALKER/BILLY MONFORT	
<b>QA/CWI</b> HARVEY STURDIVANT	
<b>MFG</b> JAMES JACO	
<b>APPROVED</b> JIMMY WALKER	
ALL STRUCTURAL MEMBERS ARE ASTM A-36 CARBON STEEL U.N.O. BASED ON ASME Y14.36M-1989	
ALL FILLET WELDS ARE 5/16" U.N.O.	

CLARKSDALE, MS 38614  
 800-542-2278  
<http://www.saftcart.com/>  
 DETAILED MANUFACTURING PLANS

<b>Z61740003</b>			
<b>SIZE</b> B	<b>MATERIAL</b> VARIES	<b>DWG NO</b> STP-16 IP	<b>REV</b>
<b>SCALE</b> VARIES	SHEET 14 OF 16		



TRAP  
 1/2" X 2" FLAT (SAW/BENT)  
 25" BEFORE BEND

THE MATERIALS AND INFORMATION CONTAINED IN THESE DOCUMENTS ARE THE SOLE PROPERTY OF SAF-T-CART. ANY DESIGN OR PRINCIPLE CONTAINED IN THE PRINTS IS CONSIDERED CONFIDENTIAL. THIS INFORMATION IS SUMMITTED TO YOU WITH AGREEMENT THAT IS IT NOT TO BE REPRODUCED, COPIED OR RELEASED IN PART OR IN WHOLE TO ANY COMPANY OR INDIVIDUAL. BY ACCEPTING THIS DOCUMENT YOU ARE AGREEING TO THE STATEMENTS ABOVE.

DIMENSIONS ARE IN INCHES UNLESS SPECIFIED OTHERWISE DO NOT TAKE DIMENSIONS FROM DRAWING

TOLERANCES  
 FRACTIONS ± 1/16"  
 ANGLES ± 0.5°  
 X.XX ± N/A  
 X.XXX ± N/A

**DRAWN**

Cortney 4/26/2019

**CHECKED**

REID WALKER/BILLY MONFORT

**QA/CWI**

HARVEY STURDIVANT

**MFG**

JAMES JACO

**APPROVED**

JIMMY WALKER

ALL STRUCTURAL MEMBERS ARE ASTM A-36 CARBON STEEL U.N.O. BASED ON ASME Y14.36M-1989

ALL FILLET WELDS ARE 5/16" U.N.O.

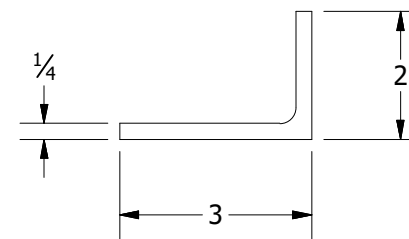
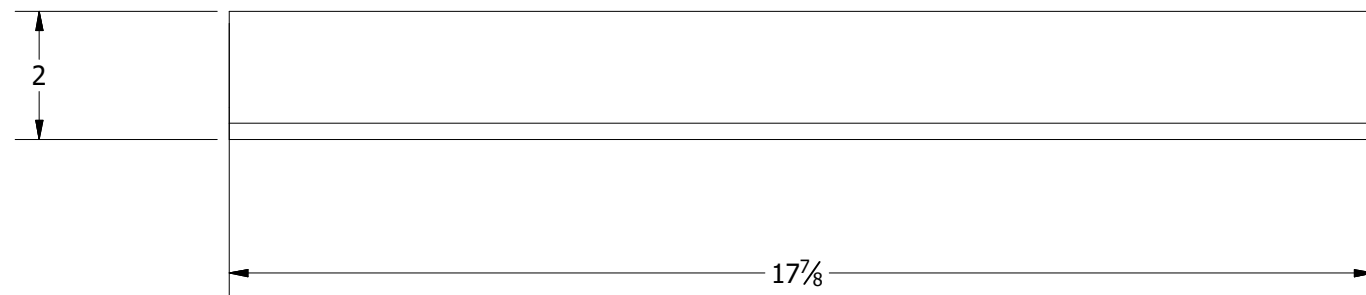
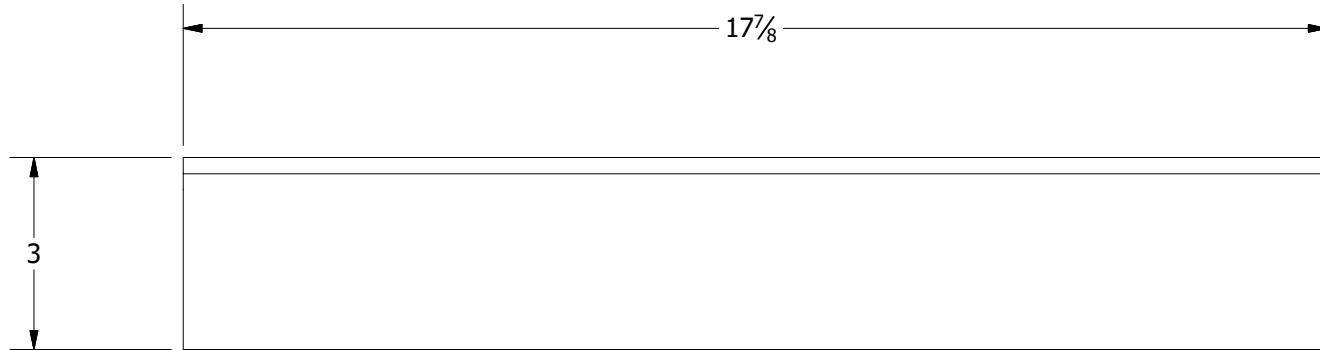
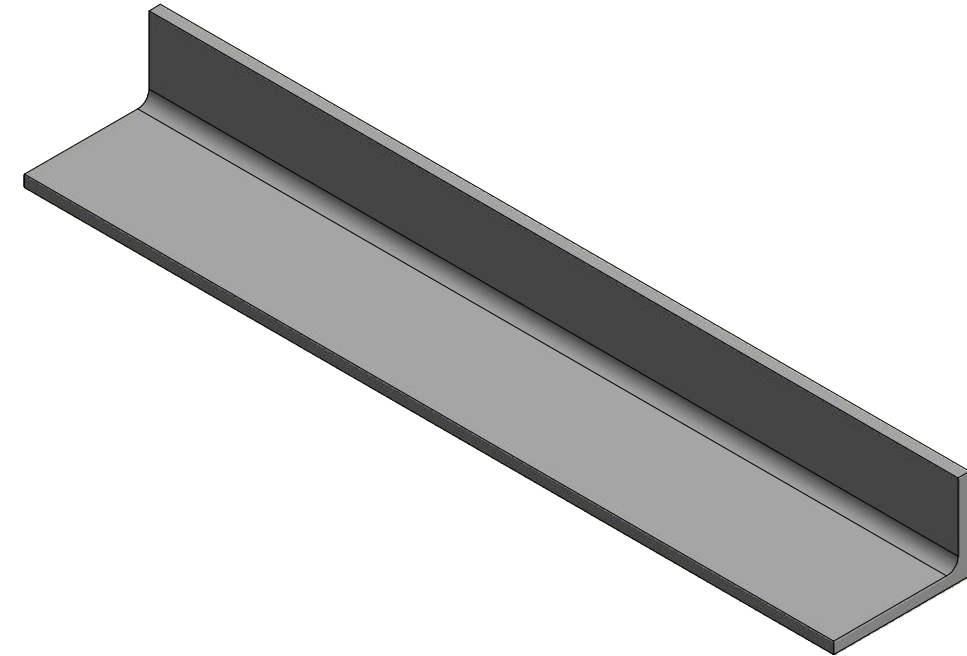


CLARKSDALE, MS 38614  
 800-542-2278  
<http://www.saftcart.com/>  
 DETAILED MANUFACTURING PLANS

Z61940000

SIZE	MATERIAL	DWG NO	REV
B	VARIES	STP-16 IP	
SCALE	VARIES	SHEET 15 OF 16	

TRAP GUIDE  
1/4" X 3" X 2" ANGLE (SAW)



THE MATERIALS AND INFORMATION CONTAINED IN THESE DOCUMENTS ARE THE SOLE PROPERTY OF SAF-T-CART. ANY DESIGN OR PRINCIPLE CONTAINED IN THE PRINTS IS CONSIDERED CONFIDENTIAL. THIS INFORMATION IS SUMMITTED TO YOU WITH AGREEMENT THAT IS IT NOT TO BE REPRODUCED, COPIED OR RELEASED IN PART OR IN WHOLE TO ANY COMPANY OR INDIVIDUAL. BY ACCEPTING THIS DOCUMENT YOU ARE AGREEING TO THE STATMENTS ABOVE.

DIMENSIONS ARE IN INCHES UNLESS SPECIFIED OTHERWISE DO NOT TAKE DIMENSIONS FROM DRAWING

TOLERANCES  
FRACTIONS ± 1/16"  
ANGLES ± 0.5°  
X.XX ± N/A  
X.XXX ± N/A

DRAWN  
Cortney 4/26/2019

CHECKED  
REID WALKER/BILLY MONFORT

QA/CWI  
HARVEY STURDIVANT

MFG  
JAMES JACO

APPROVED  
JIMMY WALKER

ALL STRUCTURAL MEMBERS ARE ASTM A-36 CARBON STEEL U.N.O. BASED ON ASME Y14.36M-1989

ALL FILLET WELDS ARE 5/16" U.N.O.

CLARKSDALE, MS 38614  
800-542-2278  
<http://www.saftcart.com/>  
DETAILED MANUFACTURING PLANS

Z91740000

SIZE	MATERIAL	DWG NO	REV
B	VARIES	STP-16 IP	
SCALE	VARIES	SHEET 16 OF 16	